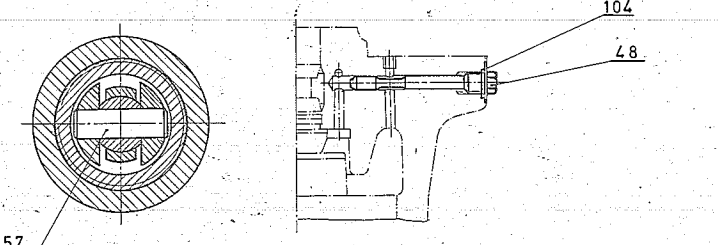
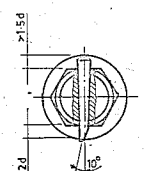


SECTION C-C

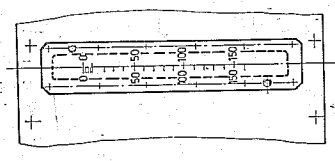


SECTION E-E SCALE 1:1

SECTION F-F PART SECTION



SECTION G-G



PARTIAL VIEW - Z (WITHOUT COVER ITEM NO.111)

TECHNICAL REQUIS:-

1. ALL DIMENSIONS ENCLOSED AS \square SHALL BE CHECKED AND RECORDED DURING ASSY.
2. ALL THE CLEARANCES SHALL BE MEASURED IN COLD CONDITION.
3. HOLES FOR ALL THE TAPER PINS SHALL BE DRILLED AND REAMED DURING ASSY & SHALL BE SECURED PROPERLY.
4. HOLES FOR GRUB SCREWS SHALL BE DRILLED AND TAPPED DURING ASSY & SHALL BE SECURED PROPERLY.
5. ALL THE LOCK WASHER WILL BE PROPERLY BENT ON TWO SIDES.
6. THE ACHIEVED DIMENSION (DIMENSION 170) UNDER CONSIDERATION OF DAMPING LENGTH 17 ± 0.2 (ZONE G 30) SHOULD BE RECORDED DURING ASSY. THIS IS REQUIRED FOR MANUFACTURE OF THICKNESS OF THE 'PACKER' OF IP CONTROL VALVE (DRG. NO. 0-11404-02200).
7. ACHIEVED CLEARANCE (II) MUST BE MIN. 0.06 MM LARGER THAN CLEARANCE (I) (ACHIEVED CLEARANCE (III) MUST BE MIN. 0.04 MM LARGER THAN CLEARANCE (IV)).
8. ASSEMBLY SHALL BE CONSERVED WITH FIRE RESISTANT FLUID.

NOTE:-
TOTAL WEIGHT OF IP CONTROL VALVE SERVO MOTOR - 1250 Kg.
(INCLUDING YOKE, CASING, COVER, PRE-CONTROL, & TESTING DEVICE, FEED BACK CAM, COUPLING, POTENTIO-METER, & LIMIT SWITCHES.)

ITEM NO.	DESCRIPTION	DRAWING NO.	VAR.	MATERIAL SPECN	UNIT WT.(KG)	ZONE
001	111 COVER	4-11404-02049	AA1011808072	AA10108	0.80	135
012	110 SCREW LOCK M5	4-12307-01655	W9737160302	AKULON	0.001	136
006	109 ROD END M12	4-12307-01054	W9731230706	STEEL	0.12	134
001	108 WIPER	3-12306-01042	W9731230603		0.20	133
001	107 COMPACT SEALING RING 1541	3-12307-01052	W9731230604		0.20	132
002	106 AUTOMATIC GASKET SET-1170	3-12307-01051	W9731230605		0.20	131
001	105 O RING 52X3	ST-24001-036	W735980107	VITON 700	0.01	126
001	104 O RING 22X3	ST-24001-021	W735980101	VITON 700	0.01	125
004	103 O RING 16X3	ST-24001-013	W735980107	VITON 700	0.01	125
001	102 O RING 43X3	ST-24001-031	W735980121	VITON 700	0.02	124
001	101 O RING 154X3	ST-24001-155	W735980176	VITON 700	0.03	123
003	100 O RING 129X4	ST-24001-058	W735980117	VITON 700	0.03	122
002	099 O RING 108X3	ST-24001-052	W735980115	VITON 700	0.03	121
001	098 O RING 228X4	ST-24001-078	W735980155	VITON 700	0.03	120
002	097 O RING 74X3	ST-24001-044	W735980118	VITON 700	0.02	119
001	096 GASKET	4-11404-02094	HW 215170708	CAFA, BS 2815	0.005	118
001	095 GASKET	4-11404-02048	HW 215170708	CAFA, BS 2815	0.015	117
001	094 O RING 34X3	ST-24001-028	W735980102	VITON 700	0.02	116
004	093 GASKET	4-11404-02047	HW 215170708	CAFA, BS 2815	0.01	115
001	092 GASKET	3-11404-02048	HW 215170708	CAFA, BS 2815	0.02	114
001	091 GASKET	4-11404-02045	HW 215170708	CAFA, BS 2815	0.010	113
004	090 PISTON RING	3-12307-01058	AA1010112139	AA 18704	0.120	110
001	089 TURN BUCKLE NUT M16	4-11402-02087	AA10111	AA 10112	0.12	109
001	088 NUT HEX. PM 8-B/R16	AA 7151115	AA 7151115	AA 7151115	0.02	107
001	087 NUT M16 LEFT HAND	4-11402-02086	AA1050204186	AA 15504	0.03	106
001	086 NUT HEX. PM 16-B/R16	AA 7151115	AA 7151115	AA 7151115	0.03	105
008	085 GRUB SCREW EM 8 X 10	IS: 6084	W9737120911	109: IS: 1367	0.030	101
001	084 GRUB SCREW EM 5 X 16	IS: 6084	W9737120903	109: IS: 1367	0.030	100
002	083 SCRU CAP SOC SH HD PM 5 X 12	HW 7121199	HW 7121199	HW 7121199	0.003	97
016	082 SCRU CAP SOC SH HD PM 5 X 16	HW 7121199	HW 7121199	HW 7121199	0.003	98
002	081 HEX SOC HD CAP SCREW M 12 X 30	IS: 2269	W9737120801	8-8: IS: 1367	0.04	95
004	080 HEX SOC HD CAP SCREW M 10 X 40	IS: 2269	W9737120802	8-8: IS: 1367	0.03	94
008	078 HEX SOC HD CAP SCREW M 10 X 25	IS: 2269	W9737120802	8-8: IS: 1367	0.03	93
112	078 HEX SOC HD CAP SCREW M 8 X 20	IS: 2269	W9737120802	8-8: IS: 1367	0.02	92
001	077 PIN CYL. BVL END 10h 8 X 12	ST: 05010-097	AA1020218088	AA 10218	0.005	88
001	076 PIN TAPER 10X85	ST: 05010-095	AA1020218088	AA 10218	0.005	85
001	075 PIN TAPER 10X65-5T	AA7171041	AA7171041	AA7171041	0.04	84
001	074 PIN TAPER 6X70	4-11404-02044	AA7171041	AA7171041	0.02	83
002	073 PIN TAPER 6X55	4-11402-02083	AA7171041	AA7171041	0.018	82
004	072 PIN TAPER 6X50-ST	AA 7171041	AA7171041	AA7171041	0.012	81
004	071 PIN TAPER 6X40-ST	AA 7171041	AA7171041	AA7171041	0.009	80
006	070 PIN TAPER 4X36	4-11421-01114	AA7171041	AA7171041	0.004	79
004	069 PIN TAPER 4X32	4-13336-01007	AA7171041	AA7171041	0.004	78
006	068 PIN TAPER 3X20-ST	AA 7171041	AA7171041	AA7171041	0.001	77
002	067 PIN TAPER 3X24	4-13336-01008	AA 7171041	AA 7171041	0.001	76
001	066 COLLAR NUT HEX. PM 30X1.5	ST: 03020-030	AA1020218097	AA 10218	0.120	73
001	065 FLANGE	4-11402-02082	HW1061891100	500-215	5.150	72
001	064 FLANGE 6576-14	ST: 05010-015	AA1011819201	AA 10118	1.70	70
001	063 PIN CYL. B20h 6X86	ST: 05010-213	AA1020218134	AA 10218	0.118	69
001	062 PIN CYL. B20h 6X150	ST: 05010-212	AA1020218134	AA 10218	0.15	68
001	061 PIN CYL. B 20h 6X100	ST: 05010-211	AA1020218118	AA 10218	0.28	67
001	060 PIN CYL. B12h 6X126	ST: 05010-210	AA1020218088	AA 10218	0.110	66
001	059 PIN CYL. B12h 6X66	ST: 05010-209	AA1020218088	AA 10218	0.06	65

ITEM NO.	DESCRIPTION	DRAWING NO.	VAR.	MATERIAL SPECN	UNIT WT.(KG)	ZONE
002	058 PIN CYL. B12h 6X42	ST: 05010-202	AA1020218088	AA 10218	0.03	64
001	057 PIN CYL. B12h 6X38	ST: 05010-208	AA1020218088	AA 10218	0.02	63
004	056 RING 20X32X3	4-11402-02081	AA1020218169	AA 10218	0.04	62
001	055 RING 40X65X20	4-11402-02043	HW1020218975	AA 10218	0.10	61
001	054 SPACER RING	4-11404-02042	AA1020218202	AA 10218	0.08	60
001	053 ORIFICE	4-11404-02041	AA1020218193	AA 10218	0.50	59
001	052 GUIDE	3-11402-02076	HW1950284216	HW1950284216	0.45	58
006	051 SPACER IN TWO HALVES	4-12306-01016	AA 10115	AA 10115	0.026	57
001	050 SCALE	3-11404-02039	PLEXIDURIT	W9731140407	0.10	56
001	049 POINTER	4-11404-02038	AA1020218169	AA 10218	0.10	55
001	048 SPECIAL SCREW	4-11404-02037	AA10218	AA10218	0.10	54
001	047 PIN	4-11404-02072	HW10584	HW10584	0.10	53
001	046 COVER	3-11404-02038	AA101808072	AA 10108	5.90	52
001	045 COVER	4-11402-02058	AA10108	AA10108	1.90	51
001	044 COVER	3-11404-02095	AA101808072	AA 10108	4.20	50
001	043 FLANGE 25-337	ST: 40007-006	AA1011819180	AA 10118	0.70	49
008	042 COVER	3-11404-02034	AA101808072	AA 10108	5.90	48
001	041 COVER	3-11404-02033	AA101808072	AA 10108	12.80	47
002	040 PUSH ROD	4-11402-02044	HW10683	HW10683	0.16	46
001	039 SUPPORT	3-11404-02032	AA1011819228	AA 10119	2.10	45
001	038 ROLLER	4-11402-02082	HW10584	HW10584	0.10	44
001	037 BUSH	3-12307-01042	AA 19936	AA 19936	0.10	43
001	036 BUSH	3-12307-01042	AA 19936	AA 19936	0.10	42
002	035 BUSH	3-12307-01042	AA 19936	AA 19936	0.35	41
001	034 BUSH	3-12307-01042	AA 19936	AA 19936	0.50	40
001	033 BELL CRANK LEVER	3-11404-02031	AA101819244	AA 10119	2.80	39
001	032 ANCHOR	3-11404-02020	AA 10119	AA 10119	8.25	38
001	031 LEVER	3-11402-02045	AA101819210	AA 10119	1.70	37
001	030 LEVER	3-11402-02042	AA101819245	AA 10119	5.90	36
001	029 CONNECTING ROD	4-11404-02014	AA1020218096	AA 10218	0.15	35
001	028 CONNECTING ROD	4-11404-02013	AA1020218095	AA 10218	0.80	34
001	027 CONNECTING ROD	4-11402-02038	AA10218	AA10218	0.20	33
001	026 COMPRESSION SPRING	3-11402-02037	W9731140205	5000235: IS: 1570	0.25	32
001	025 THREADED BUSH	4-11402-02036	HW1020218975	AA 10218	0.40	31
001	024 FORK	3-11402-02035	AA10218	AA10218	0.50	30
001	023 COVER	4-11404-02012	AA1020218193	AA 10218	0.10	29
001	022 COVER	4-11402-02033	AA10218	AA 10218	0.50	28
001	021 LOCKING PLATE	4-11402-02032	AA101808072	AA 10118	0.50	27
001	020 BUSH	4-11402-02031	AA 19936	AA 19936	0.50	26
001	019 GUIDE BUSH	4-11402-02029	AA 19936	AA 19936	0.80	25
001	018 LINER	1-11402-02028	AA1020218095	AA 10218	22.50	24
001	017 PILOT VALVE	2-11402-02027	HW106292758	0 500- 213	5.50	23
001	016 GUIDE SUPPORT	3-11404-02011	AA1020409292	AA 10208	1.70	22
004	015 SPACER IN TWO HALVES	4-12306-01026	AA1020218093	AA 10208	0.10	21
001	014 WASHER	3-11404-02009	AA1055260	AA1055260	1.125	20
001	013 WASHER	3-11404-02009	AA1055260	AA1055260	1.90	19
001	012 OIL CHAMBER RING	4-12306-01015	AA10218	AA10218	0.20	18
001	011 COVER	4-12306-01018	AA10208	AA10208	2.50	17
001	010 GLAND BUSH	3-11404-02008	AA10208	AA10208	2.50	16
001	009 GUIDE BUSH	4-11404-02007	AA 19936	AA 19936	1.40	15
001	008 GUIDE BUSH	4-11402-02024	AA19936	AA19936	1.40	14
001	007 BUSH	2-11402-02023	AA10218	AA10218	9.50	13
001	006 GUIDE BUSH	2-11402-02006	AA10218	AA10218	14.00	12
001	005 DISC SPRING	2-11404-02005	W9731140406	50 CR IV 23	70.00	11
001	004 RING NUT	4-11404-02004	HW1020218983	AA 10218	0.90	10
001	003 GUIDE SLEEVE	3-11404-02003	AA105020227	AA 10502	25.00	9
001	002 PISTON	3-11404-02002	AA105020227	AA 10502	20.00	8
001	001 PISTON ROD	2-11404-02001	HW1060283018	AA 10683	28.00	7

THE INFORMATION ON THIS DRAWING IS THE PROPERTY OF BHARAT HEAVY ELECTRICALS LIMITED.
 IT MUST NOT BE USED DIRECTLY OR INDIRECTLY IN ANY WAY DETRIMENTAL TO THE INTEREST OF THE COMPANY.
 S. 19205
 7/75-08210

REV.	DATE	ALTERED	BY	CHECKED

GMS 011404 02000		TYPE OF PRODUCT		STEAM TURBINE 500 MW	
NAME OF CUSTOMER / PROJECT		NAME		DATE	
PRINTED BY		DRAWN BY		CHECKED BY	
STE		BHP		BHP	
STM		BHP		BHP	
SCALE		WEIGHT (KG)		REF TO ASSY. DRG.	
N.T.S.		328.00		0-11404-02000	
TITLE		DRAWING NO.		REV.	
I.P. CONTROL VALVE SERVO MOTOR		0-11404-02000		111	
SHEET NO.		NO. OF SHEETS		SIZE	
				A 0	