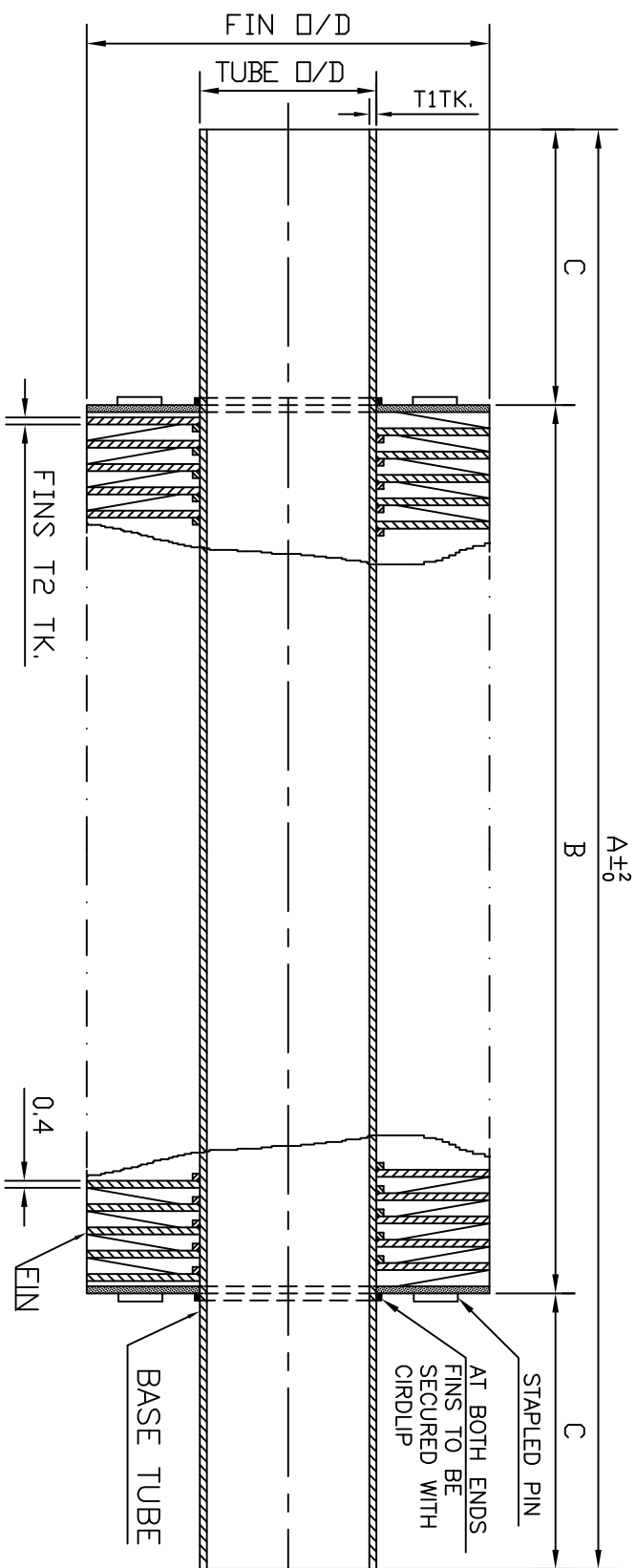


20104-50591-C.DRG. NO. 1



NOTES :-

1. CHEMICAL,MECHANICAL,HYDRO TEST,EDDY CURRENT TEST etc. AS PER AA12128 TO BE DONE FOR BASE TUBE.
2. FINS TO BE HELICALLY TENSION WOUND WITH PROPER SEATING THERE SHOULD NOT BE AIR GAP. MATERIAL TO BE SB 209 - ALLOY 1100 IN 'O' COND.
3. AT BOTH ENDS-FINS SHALL BE STAPLED AND SECURED WITH CIRCLIP.
4. AFTER WINDING TUBE TO BE HYDRO TESTED AT A PRESSURE OF 15 kg./cm² g.
5. TOLERANCE
(i) BASE TUBE AS PER AA 12128
(ii) DIMENSION B,C ±1.
(iii) FIN O/D ±0.8
6. ALL DIMENSIONS ARE IN MM.
7. TUBE SHALL BE FREE FROM OIL, DUST ETC. FROM INDISE & OUTSIDE.
8. THERMAL CONDUCTIVITY: 222 W/M°C THIS CAN BE ESTABLISHED BY ELECTRICAL CONDUCTIVITY TEST AS AN ALTERNATE TO THERMAL CONDUCTIVITY TEST AND MIN. ACCEPTABLE VALUE OF ELECTRICAL CONDUCTIVITY SHALL BE 59% IACS.
9. IT IS TO BE ENSURED THAT FINS ARE NOT LOOSE WOUNDED PARTICULARLY AT ENDS AND AT JOINT (IF ANY).

IT.	BASE TUBE	FINS	DIMENSIONS							
NO.	O/D	T1TK.	MATL.	O/D	T2TK.	NO.OF FIN/m	MATL.	A	B	C
1	25	1.0	ADM.BRASS TO AA12128	57	0.4	433	AL	2268	2194	37

WEIGHT OF ELEMENTS Kg. (APPROX)

Element	Weight (Kg)	Total	
Cu	Zn	Al	TOTAL
1.02	0.44	2.14	3.6

REV.	DATE	ALTERED	REMARKS	VAR. NO.	ITEM NO.	DESCRIPTION	QTY	UNIT	WT.			
59	64	65	75	78	79	25	27	29	01	L TYPE FIN TUBE	AL (FIN)	3.6
VAR00	QTY	REMARKS	VAR. NO.	ITEM NO.	DESCRIPTION	QTY	UNIT <td>WT.</td> <td></td> <td></td> <td></td> <td></td>	WT.				

28 → CARD TYPE-3

28 → CARD TYPE-1
 28 → CARD TYPE-2
 28 → CARD TYPE-3

ADDITIONL INFORMATION
 STATUS OF DRAWING
 DISTRIBUTION OF PRINTS
 OC - 1
 HCM - 4

REV. DATE ALTERED CHECKED APPROVED
 01 29.10.10 APPROVED

TABLE FOR WT. OF ELEMENTS ADDED.
 NOTE-9 ADDED

BHARAT HEAVY ELECTRICALS LTD.
 BHOPAL

TYPE OF PRODUCT OR NAME OF CUSTOMER/PROJECT
 O.F.A.F. COOLER
 200 MVA VALUUR TPS

DEPT. CODE
 AA0230208

SCALE
 1:1

WEIGHT(K.G.)

REV. DATE ALTERED CHECKED APPROVED

REV. DATE ALTERED CHECKED APPROVED
 01 29.10.10 APPROVED

3-16505-40102 01
 3-16505-40102 01