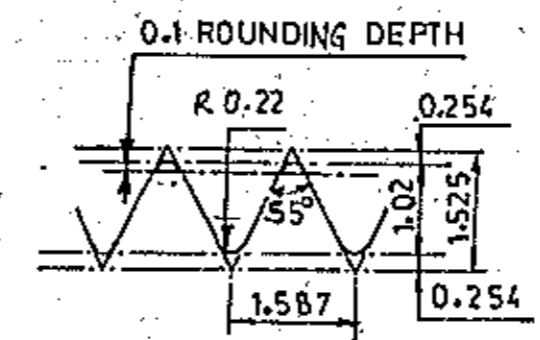
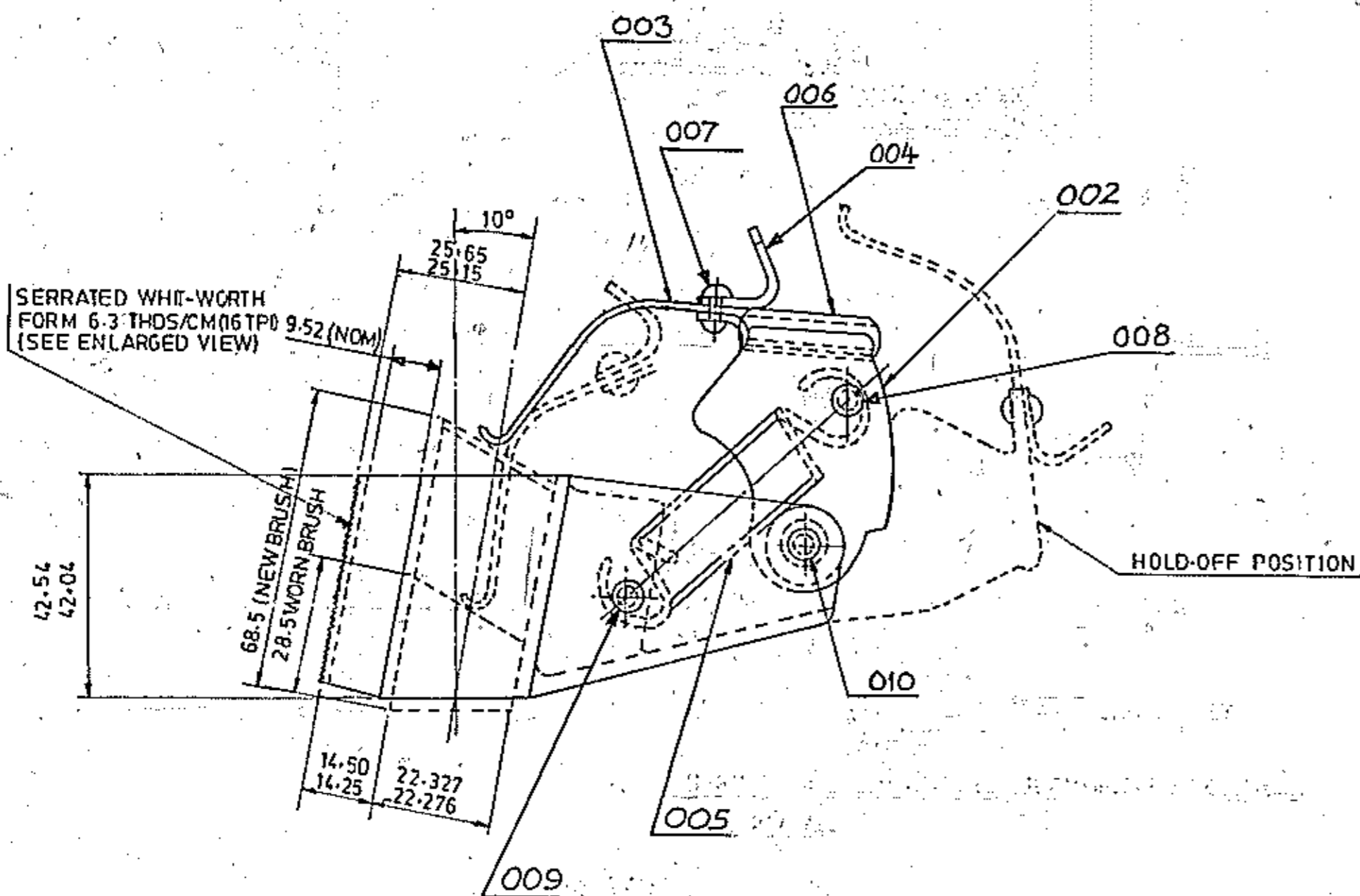


THE INFORMATION ON THIS DOCUMENT IS THE PROPERTY OF BHARAT HEAVY ELECTRICALS LIMITED. IT MUST NOT BE USED DIRECTLY OR INDIRECTLY IN ANY WAY DETRIMENTAL TO THE INTEREST OF THE COMPANY.

FIRST ANGLE PROJECTION

(ALL DIMENSIONS ARE IN mm)

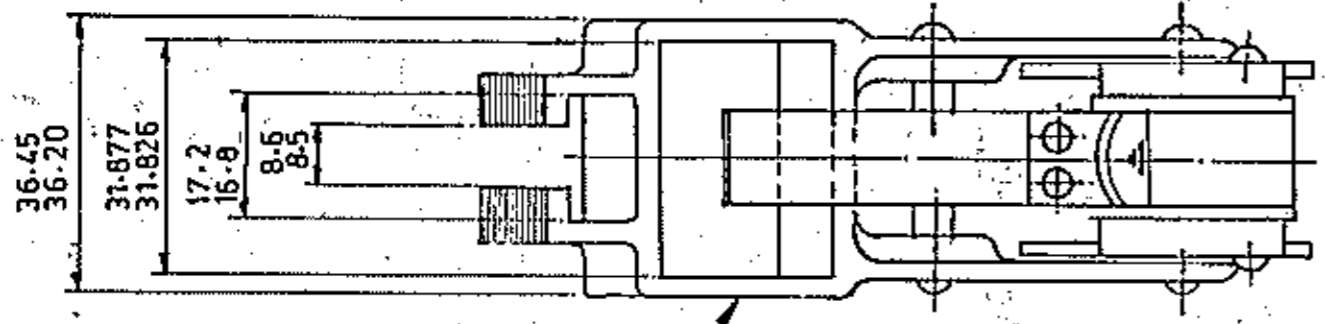
100 91 02 1E7 2 ON 090



SERRATION DETAILS

NOTE:—

1. SPRING LOAD 1750 GRMS ± 150 gm. ON NEW BRUSH POSITION.  
—1700 GRMS ± 127.5 gm (7.5%) WORN BRUSH POSITION—
2. FINISH BRIGHT DIP AND LACQUER—
3. LEAF SPRING SHOULD BE SUFFICIENTLY STIFF AND NOT TO DEFORM DURING ASSY. & OTHER OPERATIONS.
4. HOLD OFF POSITIONS OF BRUSH HOLDER SHOULD BE UNIFORM.



| ITEM NO. | DESCRIPTION           | DRAWING NO. | UNIT WT. | ZONE |
|----------|-----------------------|-------------|----------|------|
| 002      | 010 RIVET             | 24312016002 | 0.002    | D6   |
| 001      | 009 RIVET             | 24312016002 | 0.005    | D7   |
| 001      | 008 RIVET             | 24312016002 | 0.004    | D7   |
| 002      | 007 RIVET             | 24312016002 | 0.001    | F6   |
| 001      | 006 DAMPING BUSH      | 24312016002 | 0.003    | F6   |
| 001      | 005 SPRING            | 24312016002 | 0.014    | F6   |
| 001      | 004 CATCH             | 24312016002 | 0.003    | F6   |
| 001      | 003 LEAF SPRING       | 24312016002 | 0.020    | F6   |
| 001      | 002 SADDLE            | 24312016002 | 0.065    | F5   |
| 001      | 001 BRUSH HOLDER BODY | 24312016002 | 0.200    | B7   |

|   |   |   |  |
|---|---|---|--|
| <b>ADDITIONAL INFORMATION</b><br>STATUS OF DRAWING<br>DISTRIBUTION OF PRINTS<br>0/C-1, TAM-3, TNX-1.                      |   | TYPE OF PRODUCT OR NAME OF CUSTOMER / PROJECT<br>TG10931AZ/M-1, TG10919AY, TG4302AZ<br><b>BHARAT HEAVY ELECTRICALS LTD.</b><br><b>BHOPAL</b>    |  |
| REV. 09 DATE 16/1/97 ALT. CKD. CKD.<br>NOTE: I WAS CALLING SPRING LOAD 1800 GRMS ± 135 gms. & WORN BRUSH POSITION WAS ON. | REV. 8 DATE 28/7/93 ALTERED CHECKED<br>DRG TITLE WAS 'BRUSH HOLDER', ITS 002 TO 010 WERE NOT ON. M/C REF TG10731AZ/M-1, TG10919AY, TG4302AZ WERE NOT ON. VIEWS CHANGED ACCORDINGLY. DRG UPDATED. NOTE BKA WERE NOT ON. NOTE 2 WAS ON. | REV. 06 DATE 5-11-92 ALTERED CHECKED<br>DRG RETRACED. DIMN. 19.05 (WORN BRUSH) WAS ON. DIMNS. 68.5 (NEW BRUSH) & 28.5 (WORN BRUSH) WERE NOT ON. | DEPT. T.M.E. GRADE OF UN.TOL. DIM. DIM. CODE 4.05<br>SCALE 1:1 WEIGHT (Kg) 0.420 REF. TO ASSY. DRG. 04312016001 ITEM NO. 005 NO. OF ITEMS 09<br><b>TITLE</b><br><b>BRUSH HOLDER ASSY</b> |

INVENTORY NO. SIGN. & DATE REF. DRG. NO.

