

THE INFORMATION ON THIS DOCUMENT IS THE PROPERTY OF BHARAT HEAVY ELECTRICALS LIMITED. IT MUST NOT BE USED DIRECTLY OR INDIRECTLY IN ANY WAY DETRIMENTAL TO THE INTEREST OF THE COMPANY.

ITEM NO.	VAC.INTT. TYPE
001	VS 10027 (C1)
002	VS 10065 (B1)
003	VS 10007 (B2)
004	VS 12014 (B14) WL 33379 M3
005	VS 30027 (D2)
006	VS 3002 (D2) W35571P

UNSPECIFIED TOLERANCES SHALL BE -
FOR MACHINING MEDIUM AA0230209

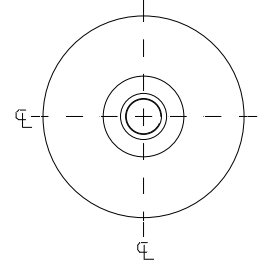
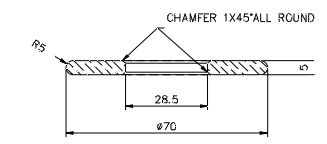
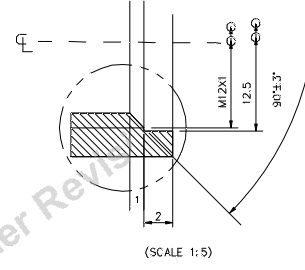
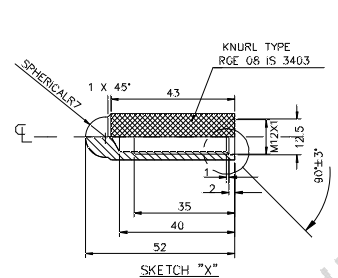
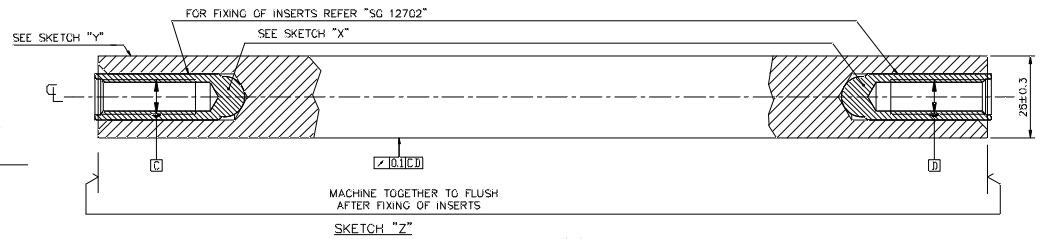
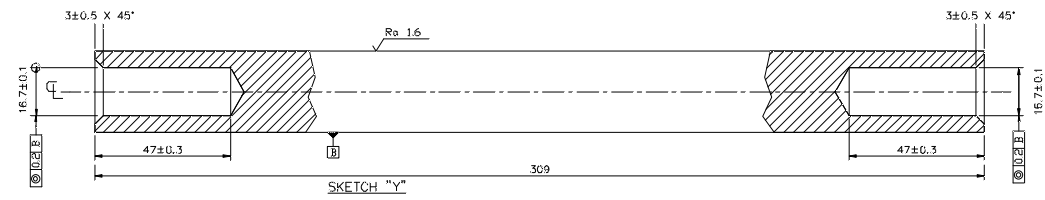
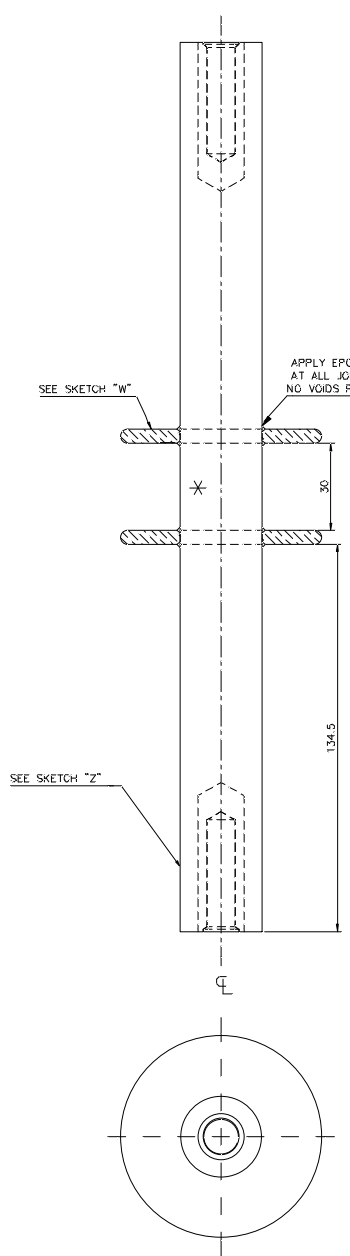
TOOL LIST

TOOL NO.	DESCRIPTION
1564023	TAP M12X1
1564245	FIXTURE FOR CHECKING CIRCULAR RUN-OUT (RADIAL)

* WITH 20 MM. INCREASED LENGTH OF TOP & BOTTOM INSULATORS BY PROVIDING 20 MM.PACKER.

NOTES:-

- REFER PRODUCT STANDARD SG 12702 FOR MATERIALS, MANUFACTURING INSTRUCTIONS, TESTS & ACCEPTANCE CRITERIA.
- OTHER DRGS FOR OPERATING ROD P5211001510,25211001574, 25211001591,25211001622,25211001623 AND 25211001624



ITEM NO.	DESCRIPTION	QTY.	UNIT	ZONE
006	321 LG.EPOXY BONDED G.F. ROD ASSY.		SG 12702	
005	309LG.EPOXY BONDED G.F. ROD ASSY.		SG 12702	
004	185LG.EPOXY BONDED G.F. ROD ASSY.		SG 12702	
003	164LG.EPOXY BONDED G.F. ROD ASSY.		SG 12702	
002	150LG.EPOXY BONDED G.F. ROD ASSY.		SG 12702	
001	144LG.EPOXY BONDED G.F. ROD ASSY.		SG 12702	

ADDITIONAL INFORMATION

mRikn dk i-dkj ;k
xk-gd@fj;kstuk dk uke
TYPE OF PRODUCT OR
NAME OF CUSTOMER/PROJECT

STATUS OF DRAWING

DISTRIBUTION OF PRINTS

01 COPY-----1
02 SWM-----3
03 TCX-----1

OPERATING ROD

2 521 10 01 627

REV.	DATE	ALTERED	P. PARE	REV.	DATE	ALTERED	P. PARE	REV.	DATE	ALTERED	MANI
07	15.07.16	CHECKED	P.K.N	06	21.08.09	CHECKED	MANI	05	02.07.09	APPROVED	MANI
		APPROVED	DIVYA			APPROVED	DIVYA			APPROVED	MAK

REVISIONS:
ITEM 006 & SH-04 ADDED.
(DCA NO-29863)

REVISIONS:
DIM 1&2 WERE 5&10 IN SKETCH'X'.
R-5 WAS R2.5 IN SKETCH'W'.
(DCA-28936)

REVISIONS:
DRG. REDRAWN SHEET 02 AND 03 ADDED.VIEWS ADDED FOR EACH ITEMS.09/03/2006 2529
(DCA-25294)

REVISIONS:
NOTE-2 DELETED
(DCA NO.06719)



HAKIY gsch bysIDV&yI fyfeVsM
HAKSIKY
BHARAT HEAVY ELECTRICALS LTD.
BHOPAL

OPERATING ROD
2 521 10 01 627

INVENTORY NO.

005