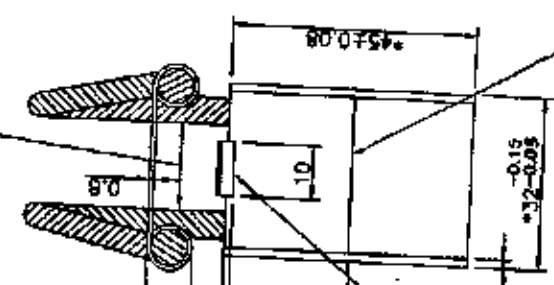
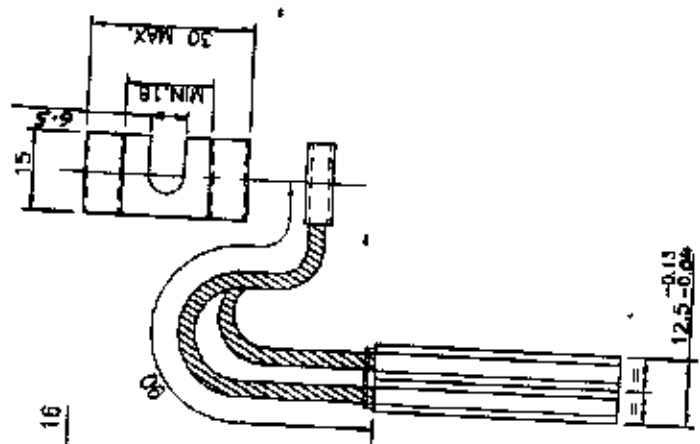


344320470

NOT TO BE LESS THAN 16



1.6 MAX THICK
 TO RUBBER 3MM
 AND BONDED TO
 BRUSHES.



SCRIBE LINES ON BOTH SIDES TO
 INDICATE CONCERNING LIMIT.

NOTES:-

1. EACH UNIT COMPRISES A BRUSH PAIR AND IS MADE UP OF TWO SINGLE BRUSHES. ~~GRADE OF BRUSH-EG10K~~
2. ALL SURFACES OF EACH BRUSH TO BE SMOOTH FREE FROM CORRUGATIONS OR MACHINE MARKS & WITHOUT COPPER PLATING.
3. TOLERANCES TO IS:13466 ON * DIMENSIONS.
4. FLEXIBLES TO CONSIST OF NO.40 S.W.G. COPPER STRAND TWISTED, NOT BRAIDED TWO FLEXIBLES PER BRUSH ARM FOUR FLEXIBLES PER UNIT.
5. ~~SUPPLIER: MORGANITE CARBON LTD.~~
6. THE GRADES OF CARBON BRUSHES SHALL BE AS PER LATEST RDSO APPROVED LIST. CURRENT RDSO APPROVED LIST TO BE ESSENTIALLY REFERRED BEFORE PI/ENQUIRY.
7. REFER TM 98262 FOR ACCEPTANCE OF CARBON BRUSHES.

STYLE LIST		
VAR NO.	IT.NO.	ST NO.
-	001	BP9044665715

VAR DO	REMARKS	ITEM NO.	ITEM FIG.	DESCRIPTION	DRAWING NO.	MATL CODE	MATL SPEC	UNIT WT	ZONE
		001		CARBON BRUSH				5 KG	
ADDITIONAL INFORMATION D 4280048/5 STATUS OF DRAWING DISTRIBUTION OF PRINT TME-2 TAM-4 TOX-1									
REV	DATE	ALTERED	CREATED	APPROVED	SCALE	DATE OF APPROVAL	SCALE ON DRAWING	WEIGHT (KG)	NO OF SHEETS
02	23/3/99				405				01
01					MTS				02
TYPE OF PRODUCT NAME OF CUSTOMER/PROJECT DY 3423/M BHARAT HEAVY ELECTRICALS LTD. BHOPAL									
NAME O.P. VERMA D. KUMAR REF TO ESTD ORG 04432047001 DRAWING NO. 34432047001									
CARBON BRUSHES									