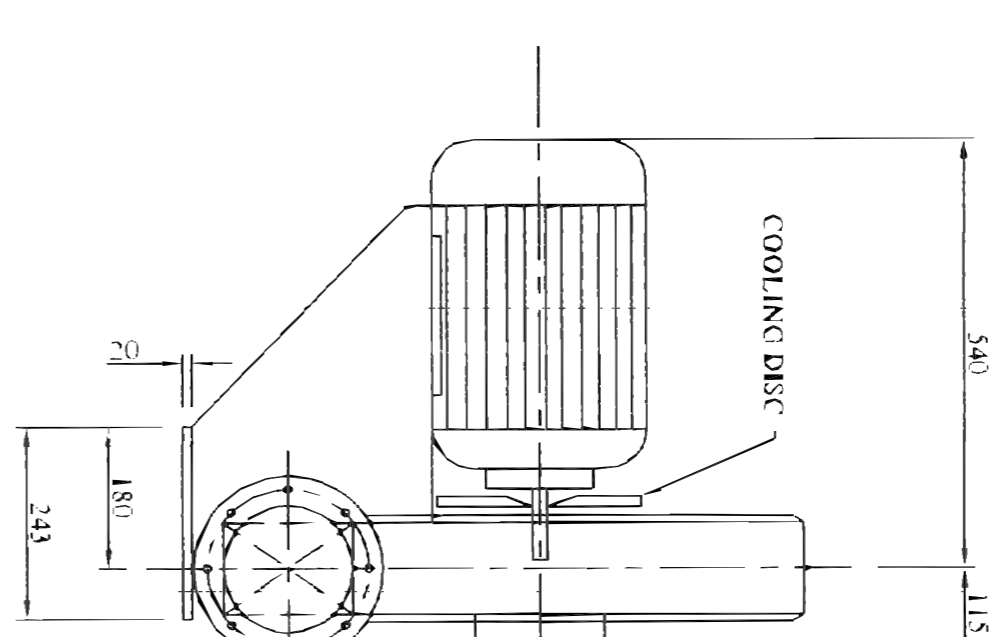
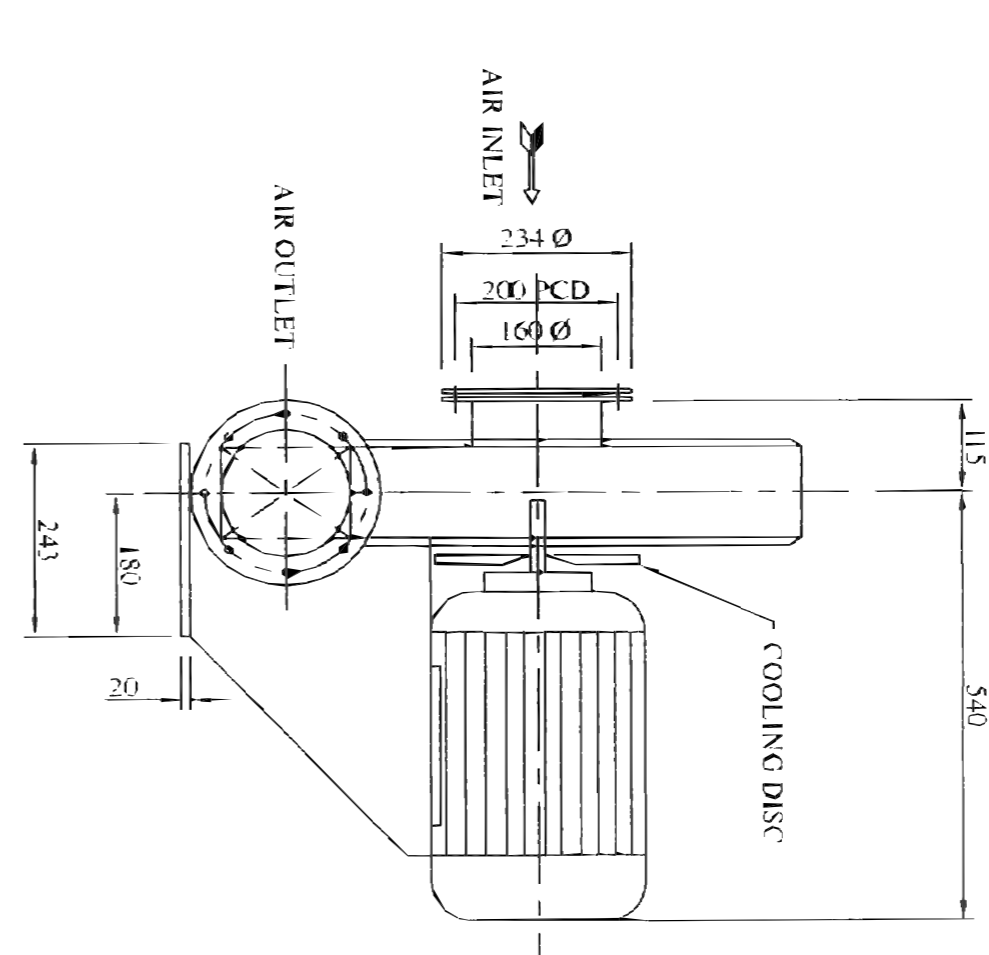


ELEVATION



SIDE VIEW AT -A



MIRROR IMAGE

GENERAL ARRANGEMENT OF AIR EXHAUSTER WITH COOLING DISC AND MOTOR

GUARANTEED TECHNICAL DATA

- I. FLUID - AIR STEAM MIXTURE
 - II. FLUID SUCTION TEMP. - 70°C
 - III. a) AIR DENSITY FOR TESTING - 1.2 KG/M³
 - b) AIR STEAM MIXTURE DENSITY AT SUCTION TEMP. - 0.923 KG/M³
 - IV. HEAD DEVELOPED AT MIXTURE DENSITY - 310 mm WG
 - V. HEAD DEVELOPED AT 1.2 KG/M³ - 403 mm WG
 - VI. AIR FLOW VOLUME AT 1.2 KG/M³ - 0.3 M³/SEC. (1080 M³/HR)
 - VII. TESTS AS PER CLAUSE 7.3.1 OF SPEC. IES7008 REV. 03
 - VIII. POWER ABSORBED AT 1.2 KG/M³ - 3.6 HP
 - IX. TOTAL WEIGHT OF ASSEMBLY - 121 KGS (APPROX.)
 - X. ARRANGEMENT TO WITH STAND 350°C DURING ABNORMAL OPERATION - ALUMINUM COOLING DISC PROVIDED
 - XI. DIAMETER OF IMPELLER AFTER MACHINING - 405 mm
 - XII. INTERNAL CLEARANCE BETWEEN INLET CONE & IMPELLER BLADE TIP - >5 MM (SEE INTERNAL DESIGN)
 - XIII. NOISE LEVEL - <= 85 dBA
 - XIV. VIBRATION LEVEL - <= 50 MICRONS
- MOTOR DATA**
- I. APPLICATION - THE ELECTRIC MOTOR IS USED FOR RUNNING OF CENTRIFUGAL FAN FOR EXTRACTION OF AIR STEAM MIXTURE FROM GLAND STEAM CONDENSER OF STEAM TURBINE
 - II. RATED OUTPUT - 3.7 KW SPEED - 2900 RPM
 - III. AMBIENT TEMP. - 50°C
 - IV. SUPPLY - 415 VOLTS 3PHASE, 50HZ AC SUPPLY
 - V. ENCLOSURE - TOTALLY ENCLOSED FAN COOLED (TEFC)
 - VI. PROTECTION IP-55
 - VII. MOUNTING - B-3, FOOT MOUNTING
 - VIII. METHOD OF STARTING - DIRECT ON LINE
 - IX. VOLTAGE VARIATION - +10%, FREQUENCY VARIATION - +5%
 - X. COMBINED VOLTAGE FREQUENCY VARIATION 10%^{2/3}
 - XI. WEIGHT OF MOTOR - 55 KGS
 - XII. STARTING CURRENT INCLUSIVE OF IS TOLERANCE - 44.64 AMP
 - XIII. RATED CURRENT - 7.2 AMP
 - XIV. POWER FACTOR - 0.87 FL
 - XV. RATED TORQUE N.m - 42.3
 - XVI. STARTING TORQUE N.m - 28.29
 - XVII. MAKE - ABB/GE/BL/CRONAPTON
 - XVIII. MOMENT OF INERTIA KG-M² - 0.04
 - XIX. MINIMUM VOLTAGE REQUIRED UNDER STARTING CONDITIONS TO BRING DRIVEN EQUIPMENT UP TO RATED SPEED - 80% OF RATED VOLTAGE
 - XX. STATOR WINDING CONNECTION - Δ DELTA
 - XXI. INSULATION CLASS - WITH TEMP. RATED DELTA
 - XXII. INSULATION TEST VOLTAGE - AS PER IS 328
 - XXIII. TYPE OF MOTOR AND IS STANDARD - MA100L213 IS-325-1990
 - XXIV. FULL LOAD EFFICIENCY AND SLIP - 82%, 3.3%
 - XXV. STARTING TIME AT 100% RATED VOLTAGE - 0.040 SEC.

FAN MATERIAL DATA

- CASING - 12 G.M.S.
- INLET - 12 G.M.S.
- IMPELLER HUB DISC - 10 G.M.S.
- BLADE - 10 G.M.S.

PEDESTAL FOR MOTOR

- INLET & OUTLET COUNTER FLANGE - 35 x 6 MM THK. M.S. PLAT
- SIDE PLATE - 10mm THK. M.S.
- TOP PLATE - 10mm THK. M.S.
- MOUNTING BASE PLATE - 20 MM THK. M.S.

MOTOR BEARING SPECIFICATION

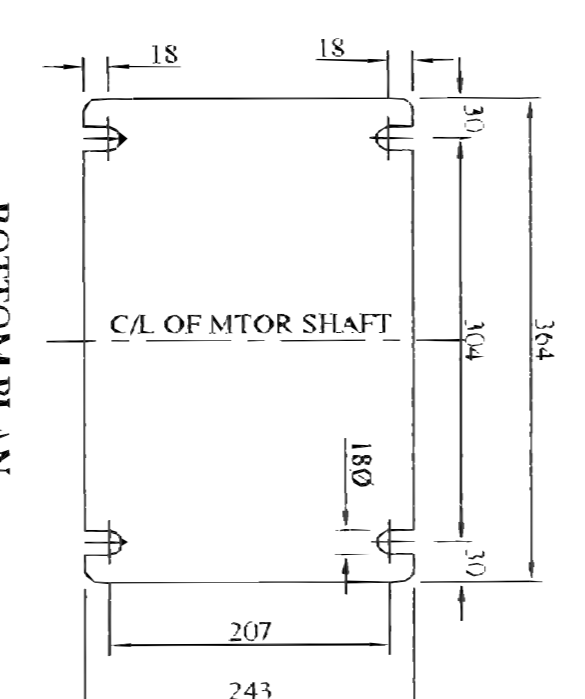
- MAKE : NRC/SKF/EVY
- BEARING NO. /DETAILS : NON DRIVING END
- DRIVING END : 6307 ZZ C3
- NON DRIVING END : 6307 ZZ C3

PAINTING

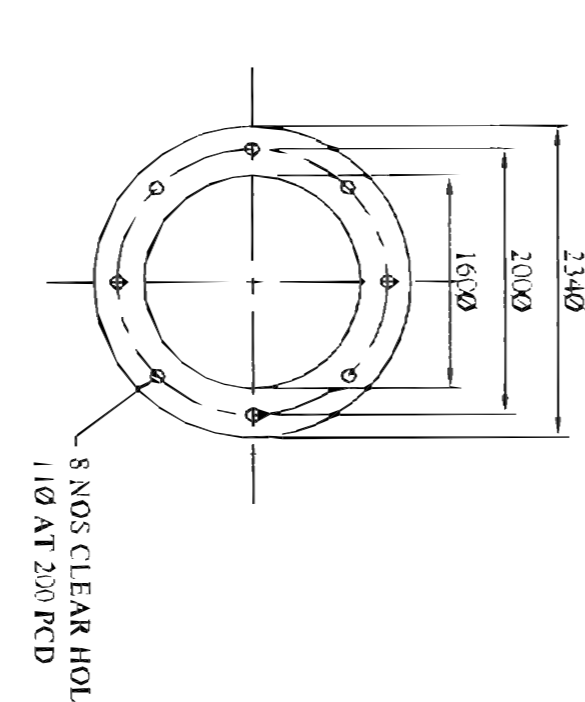
- IMPELLER - THE IMPELLER AFTER SHOT BLASTING SHALL BE PROVIDED WITH ZINC SPRAYED FINISH (THICKNESS > 60 MICRONS).
- INTERNAL SURFACES - THE INTERNAL SURFACES OF THE EXHAUSTERS SHALL BE PRESERVED WITH STEAM WASHABLE PRESERVATIVE OIL/PAINT HAVING A VISCOSITY OF 18 CENTISTOKES AT 40°C.
- OUTER SURFACES -
- a) PRIMAINE: EPOXY RESIN BASED 2 PACK ZINC PHOSPHATE WITH DFT 50 MICRONS.
- b) INTERMEDIATE: T02 PIGMENTED EPOXY RESIN INTERMEDIATE PAINT.
- c) FINISH: EPOXY RESIN BASED FINISH PAINT (TOTAL DFT 150 MICRONS).

NOTES:-

- 1. ALL DIMENSION ARE IN MM (UNLESS OTHERWISE SPECIFIED)
- 2. BHEL REF. SPEC. NO. IES7008 REV. 03
- 3. EXHAUSTER TO BE SUPPLIED IN PAIRS WITH ONE BEING THE MIRROR IMAGE OF OTHER HAVING DISCHARGE ORIENTATION AS CLOCKWISE HORIZONTAL AND ANTICLOCKWISE HORIZONTAL
- 4. SUITABLE MOUNTING BOLTS M16 x 110 WITH NUTS AND SPRING WASHERS, 4 NOS. SHALL BE SUPPLIED BY US FOR MOUNTING OF THE EQUIPMENT
- 5. SUITABLE NUTS & BOLTS FOR COUNTER FLANGES SHALL BE SUPPLIED BY US.



BOTTOM PLAN FOR FIXING THE FAN



FAN INLET / OUTLET FLANGE DETAIL

ADDITIONAL INFORMATION

- STATUS OF DRAWING
- DISTRIBUTION OF PRINTS
- CDE - 1
- HOM - 4
- FEM - 4

OWNER: INDIA BULLS REALTECH LTD.

INDIA BULLS REALTECH LTD.
GURGAON, HARYANA

OWNER'S ENGINEER: FICHTNER Consulting Engineers (India) Private Limited
CHENNAI

EPC CONTRACTOR: ELENA POWER & INFRASTRUCTURE LIMITED

| REV. | DATE | ALTERED | REV. | DATE | ALTERED |
|------|------|----------|------|------|----------|
| | | CHECKED | | | CHECKED |
| | | APPROVED | | | APPROVED |

| REV. | DATE | ALTERED | REV. | DATE | ALTERED |
|------|------|----------|------|------|----------|
| | | CHECKED | | | CHECKED |
| | | APPROVED | | | APPROVED |

| REV. | DATE | ALTERED | REV. | DATE | ALTERED |
|------|------|----------|------|------|----------|
| | | CHECKED | | | CHECKED |
| | | APPROVED | | | APPROVED |