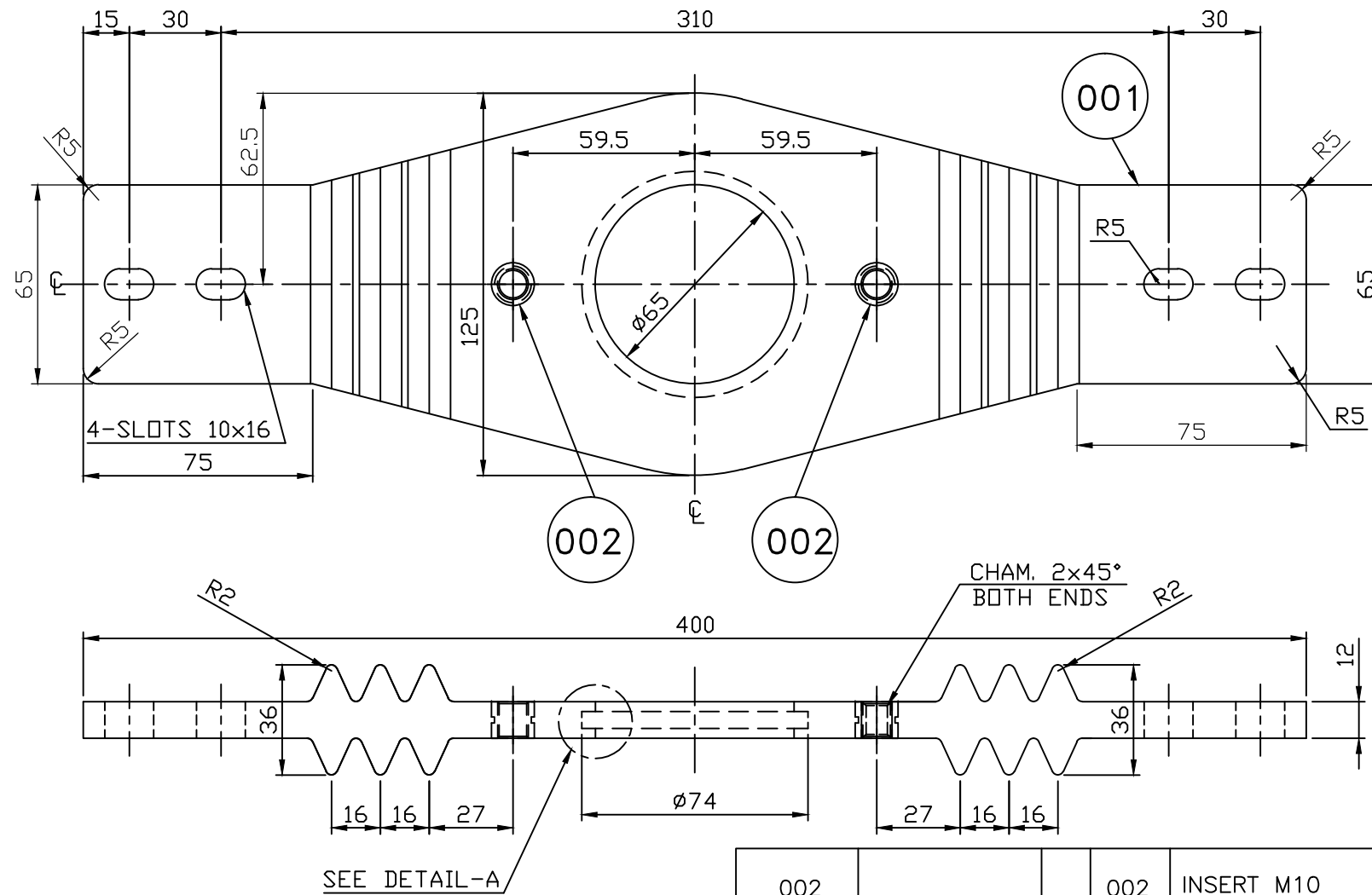


FIRST ANGLE PROJECTION

(ALL DIMENSIONS ARE IN mm)

THE INFORMATION ON THIS DOCUMENT IS THE PROPERTY OF BHARAT HEAVY ELECTRICALS LIMITED IT MUST NOT BE USED DIRECTLY OR INDIRECTLY IN ANY WAY DETRIMENTAL TO THE INTEREST OF THE COMPANY

DRG. NO. 35171000510



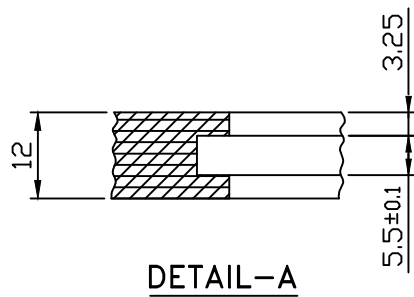
**ACCEPTANCE CRITERIA:**

1. INSULATOR TO V00 OF THIS DRAWING SHOULD BE TYPE TESTED FOR ONE MINUTE POWER FREQUENCY WITHSTAND VOLTAGE TEST AT 75 KV WITH H.V. APPLIED TO M10 SCREW MOUNTED IN M10 INSERT (IT.002) AND EARTH CONNECTED TO NEAREST ELLIPTICAL 10x16 SLOT. COMPLETE ASSEMBLY TO BE KEPT INSIDE INSULATING MEDIA TO AVOID EXTERNAL FLASHOVER DURING TESTING.
2. INSULATORS SHOULD BE TYPE TESTED AND ROUTINE TESTED FOR PARTIAL DISCHARGE TEST AT 21 KV. THE P.D. LEVEL SHOULD BE LESS THAN 10 P.C.
3. ITEM SHOULD BE THOROUGHLY DEGREASED, CLEANED, AND DRIED BEFORE PACKING IN POLYTHENE.
4. SURFACE CREEPAGE BETWEEN IT. 002 AND NEAREST 10x16 SLOT SHOULD BE 120mm MIN.

VAR. 00 - BP 9089111484

NOTE:-  
REFER SG 10602

SEE DETAIL-A



002		002	INSERT M10	45170300531	001			KG	0.0155														
001		001	ALUMINA FILLED EPOXY MOULDINGS					KG	-														
						SG10602			001														
59	64	65	75	78	79	25	27	29	58	59	60	77	29	31	34	MATL. CODE	45	55	56	58	UNIT WT.	65	72
VAR.00			REMARKS	VAR. NO.	ITEM NO.	DESCRIPTION		STD	DRAWING NO.				IT.NO.					A	C	UNIT			QTY.
													32	33	46	MATL. SPCN.	54			68		71	QTY.

28 -> CARD TYPE-3

28 -> CARD TYPE-1

28 -> CARD TYPE-2

**ADDITIONAL INFORMATION**

mRikn dk i-dkj ;k  
xk-gd@fj;kstuk dk uke  
TYPE OF PRODUCT OR  
NAME OF CUSTOMER/PROJECT

**GVM-36**

**STATUS OF DRAWING**

M

**DISTRIBUTION OF PRINTS**

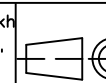
O/C - 1  
SWM - 3  
TCX - 1



HAKjr gsoh bysfDV&dYl fyfeVsM  
HAKsiky  
BHARAT HEAVY ELECTRICALS LTD.  
BHOPAL

NAME	SIGN	DATE	DATE
DRN	Sd/-	8.2.06	8.2.06
HRP	Sd/-	8.2.06	8.2.06
D.K.DIKSHIT	Sd/-	8.2.06	8.2.06

foHAKx DEPTSWE  
UNTO. DIMS. GR.  
MEDIUM  
AA0230208



SCALE  
1:2

WEIGHT(K.G.)

REF. TO ASSY. DRG.  
05171000511

en d- en Ja[k  
ITEM NO. OF  
ITEM  
008 002

'kh"AZd@LE

**SUPPORT INSULATOR  
FOR V.I.**

**DRAWING NO.  
35171000510**

iqu-  
REV.  
02

i="B d-88r. No. 01 i="Bksa dh la[;k OF SHT.01

35171000510-R01-S01

SIGN. & DATE

INVENTORY NO.

REV.	DATE	ALTERED	AKN
02	13.05.13	CHECKED	RRR
		APPROVED	DIVYA

SG CODE ADDED

(DCA NO. 31873)

REV.	DATE	ALTERED	AKN
01	12.06.12	CHECKED	RRR
		APPROVED	DIVYA

NOTES MODIFIED & DIMENSION ADDED.

(DCA NO. 31134)