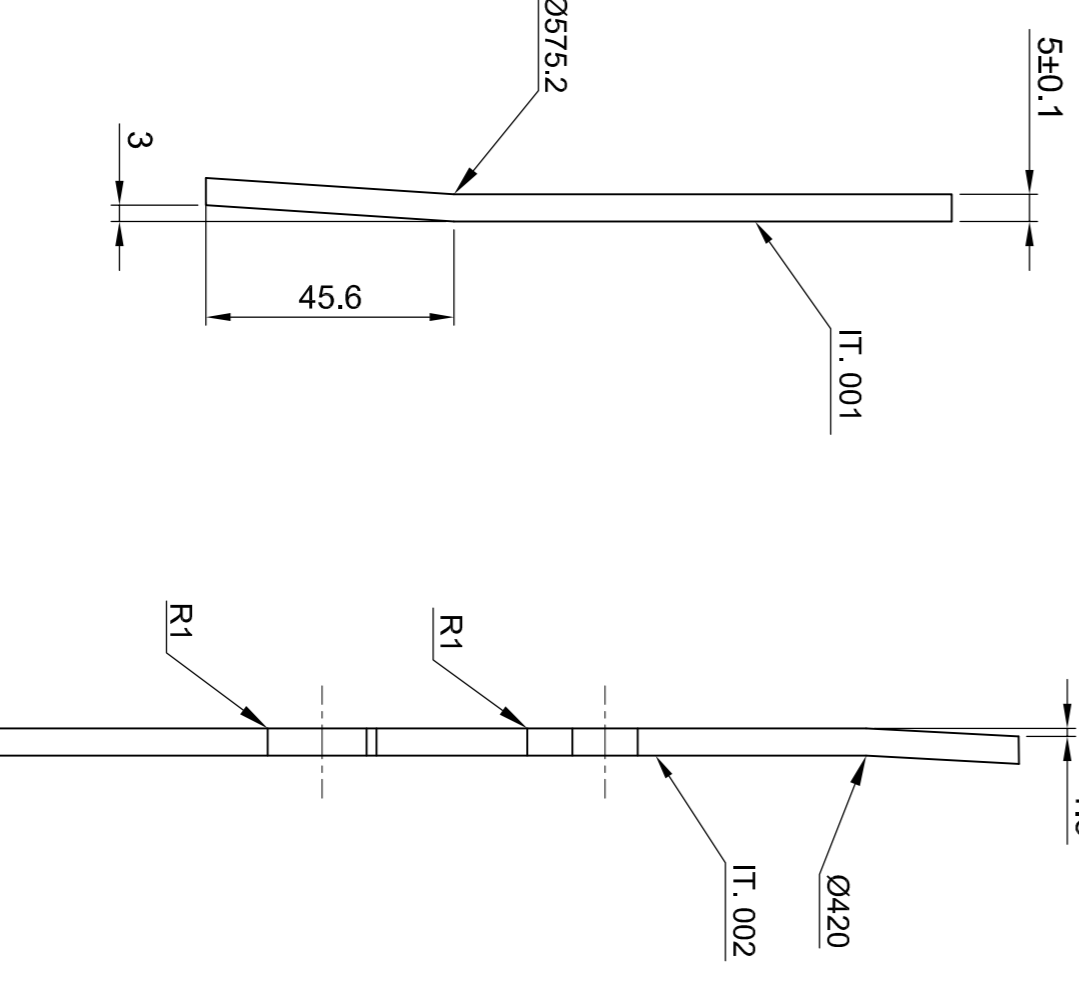
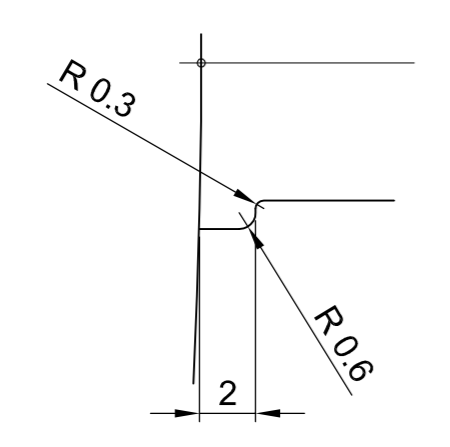
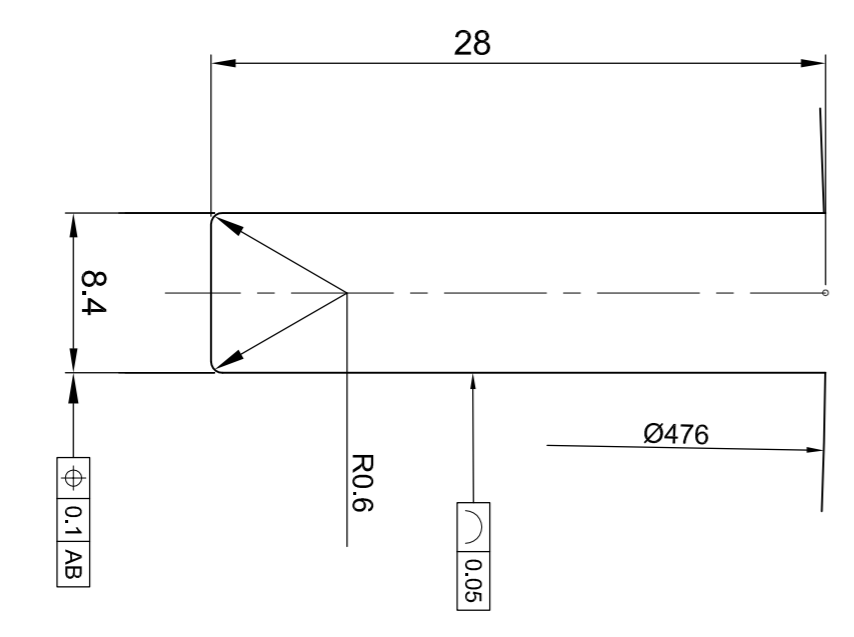
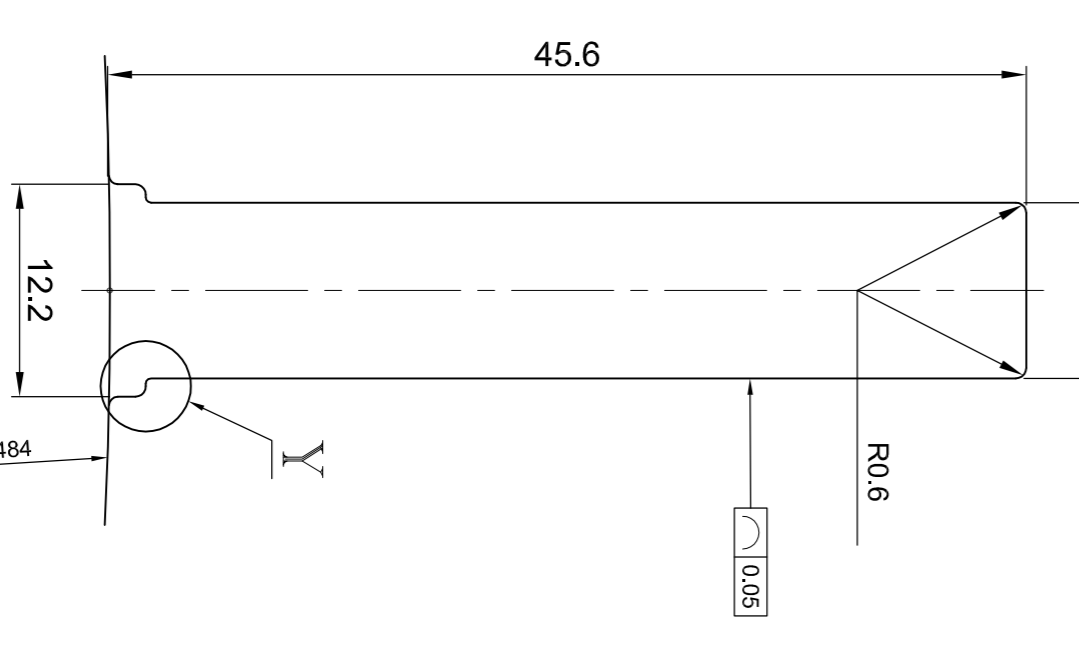
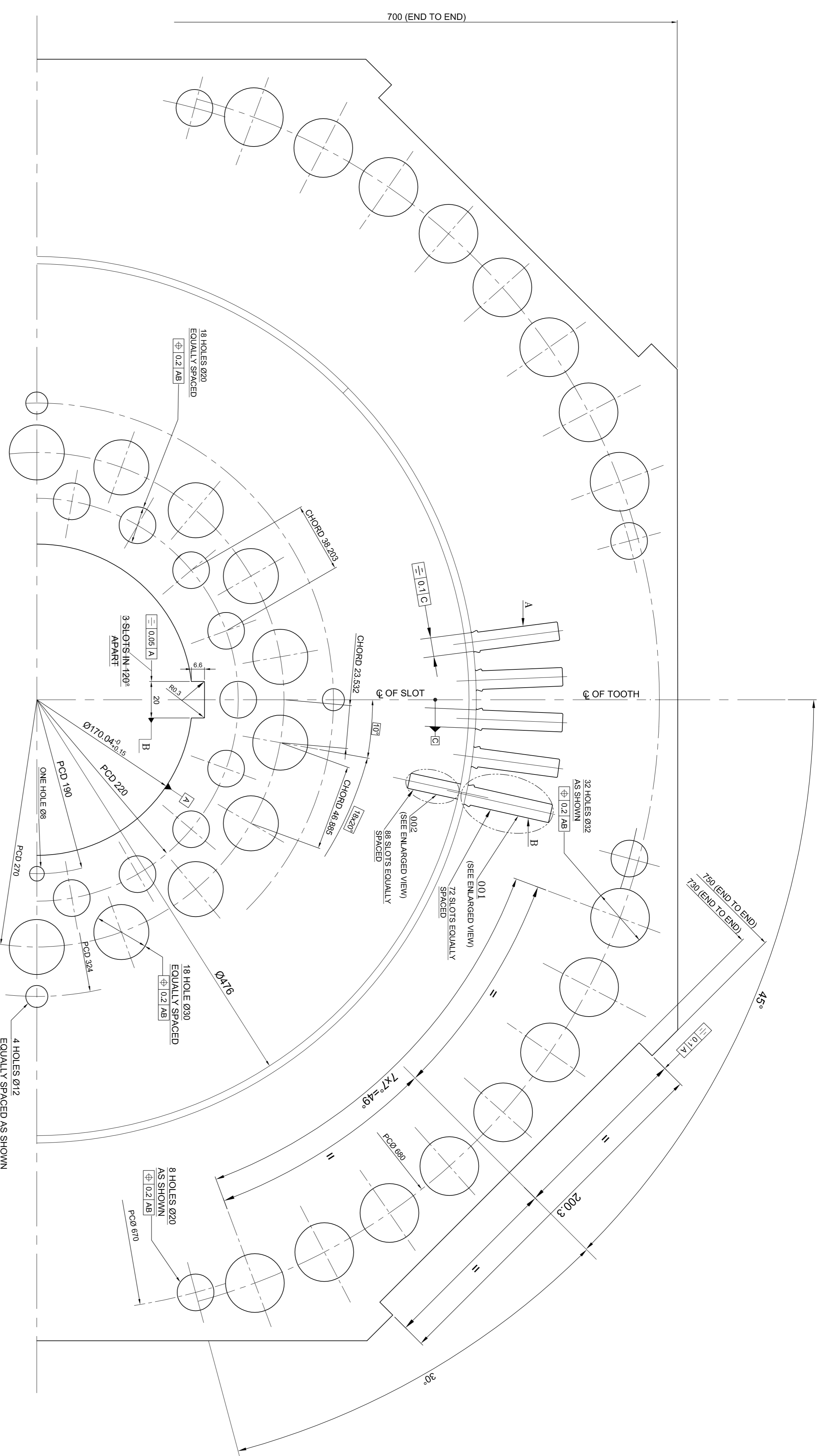


THE INFORMATION ON THIS DOCUMENT IS THE PROPERTY OF BHARAT HEAVY ELECTRICALS LIMITED. IT MUST NOT BE USED DIRECTLY OR INDIRECTLY IN ANY WAY DETRIMENTAL TO THE INTEREST OF THE COMPANY.



- NOTES:-
1. DIMENSIONS OF UNTOLERATED DIMENSIONS TO BE ± 0.3
 2. ITEM 002 TO BE MADE FROM INCUTS OF ITEM 001.
 3. THE CHAMFERING SHALL BE PROVIDED ON ROTOR END PLATE IN OPPOSITE DIRECTION FOR UPPER & LOWER END PLATE FOR EACH M/C SET. UPPER PLATE SHALL BE MARKED AS 'X' & LOWER PLATE SHALL BE MARKED AS 'Y' IN REF. TO HOLE Ø12.
 4. THE ROTOR END PLATE TO BE PACKED ALONG WITH ROTOR MAIN & MID STAMPINGS - TO AVOID MISMATCH.
 5. THE STATOR END PLATE TO BE PACKED ALONG WITH STATOR MAIN STAMPINGS - TO AVOID MISMATCH.
 6. NO OF SLOTS IN STATOR - 72.
 7. 4 HOLES Ø12 ON PCD 324 AND HOLE Ø8 ON PCD 190 ARE FOR TOOLING PURPOSE ONLY.
 8. BURR LEVEL SHOULD NOT BE MORE THAN 50 MICRON.
 9. ENSURE FLATNESS OF THE PLATE BEFORE MACHINING.
 10. PAINT BOTH SIDE WITH ANTI-CORROSIVE PRIMUMING PAINT AS PER MATL. SPEC. AA56101.

QTY	VAR. NO.	REMARKS	VAR. NO.	DESCRIPTION	DRAWING NO.	T.M.NO.	MATL. CODE	UNIT WT.	NO. OF
02				ROTOR END PLATE	5M476x476			5.00	
01				STATOR END PLATE	5700x700			7.00	

REV.	DATE	ALTERED	CHKD.	APPRD.	ZONE	REVISION
01	30.04.14	CHECKED	APPROVED		01	30.04.14 APPROVED
02	31.05.14	CHECKED	APPROVED		02	31.05.14 APPROVED
03	05.09.16	CHECKED	APPROVED		03	05.09.16 APPROVED
04	12.09.16	CHECKED	APPROVED		04	12.09.16 APPROVED
05	05.11.16	CHECKED	APPROVED		05	05.11.16 APPROVED
06	11.10.17	CHECKED	APPROVED		06	11.10.17 APPROVED

SLOT FOR STATOR END PLATE
ITEM 001

SLOT FOR ROTOR END PLATE
ITEM 002

DETAIL-Y

IT. 001

IT. 002

ADDITIONAL INFORMATION
SIM. DRG. SKEL-4889 SKEL 4890

DISTRIBUTION OF PRINTS
TME-1, TMA-3, PRM-1

TYPE OF PRODUCT
OR
NAME OF CUSTOMER/PROJECT
INDUCTION MOTOR
GPR 6068

DEPT. CODE
BHARAT HEAVY ELECTRICALS LTD.
BHO PAL

SCALE
1:1

WEIGHT
04.53164052

DRAWING NO.
14453164051

SHEET NO. 01 OF SHEET 01

INVENTORY NO.	SIGN. & DATE	REF. DRG. NO.