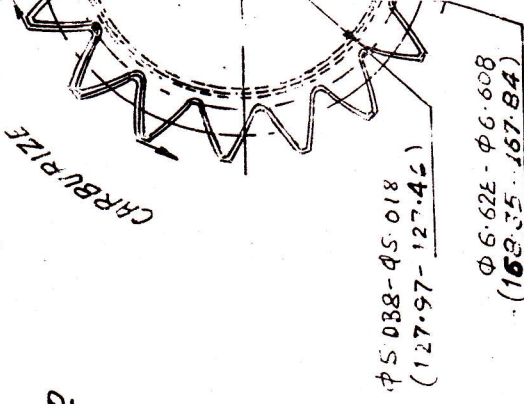
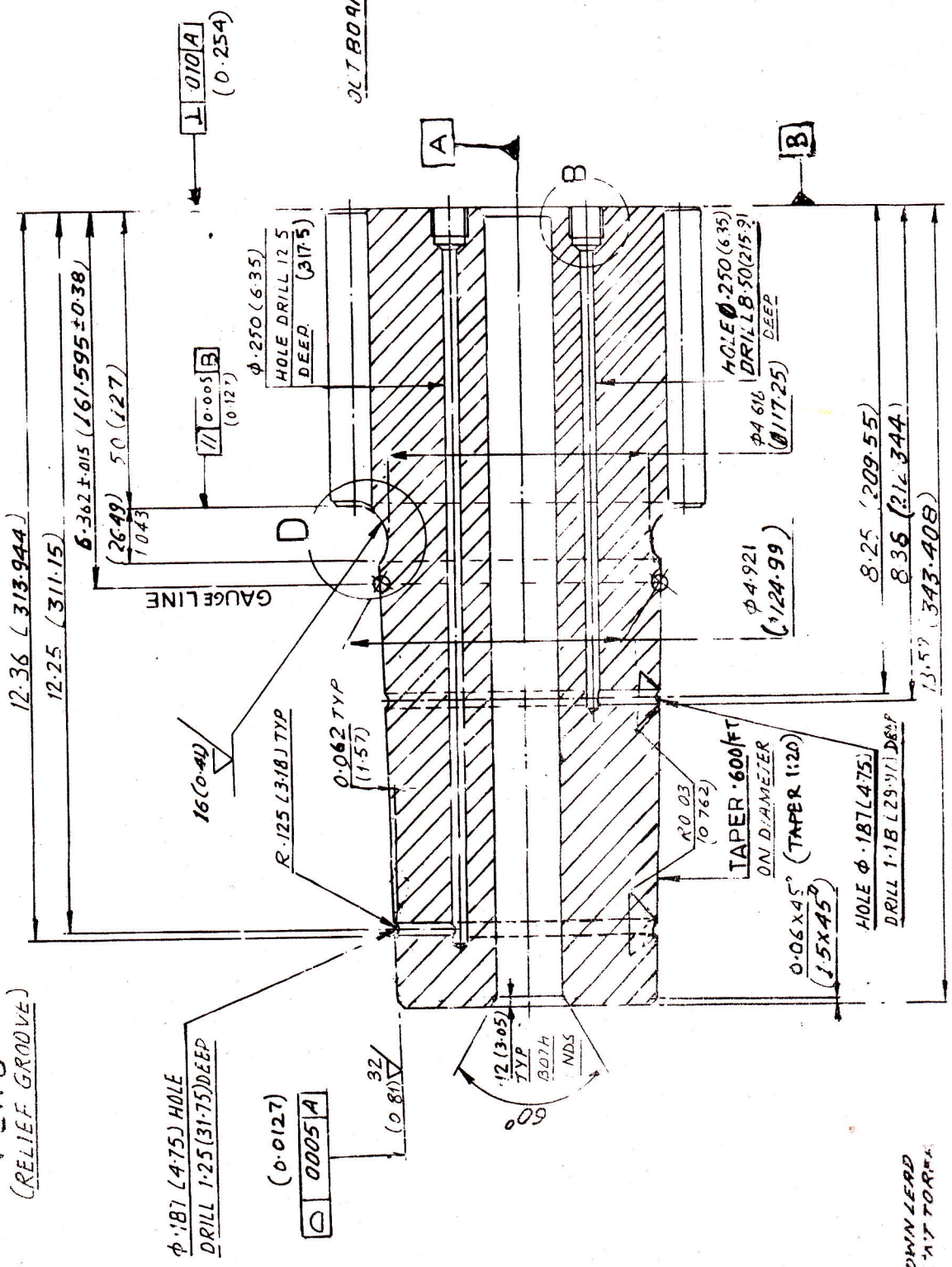


BREAK CORNER
R.005 MAX (R0.125)
VIEW D
(RELIEF GROOVE)

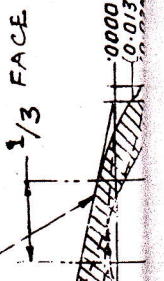
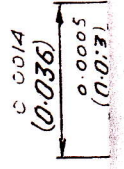
0-0.015 (0.381) NO
GRINDING STEP
ALLOWED.
VIEW C



φ 5.088 - φ 5.018
(127.97 - 127.45)
φ 6.62E - φ 6.608
(168.35 - 167.84)



SECTION - FF



| | |
|--------|--------|
| 0.0381 | 0.0015 |
| 0.0254 | 0.0010 |
| 0.0127 | 0.0005 |
| 0.0076 | 0.0005 |
| 0.0025 | 0.0005 |

POINT OF CROWN LEAD
MUST BE TANGENT TO
THIS AREA

GM 17/90

Handwritten signature
Dy. Engg.
(TGM)

Dwg. No - 14457692001 Rev-03