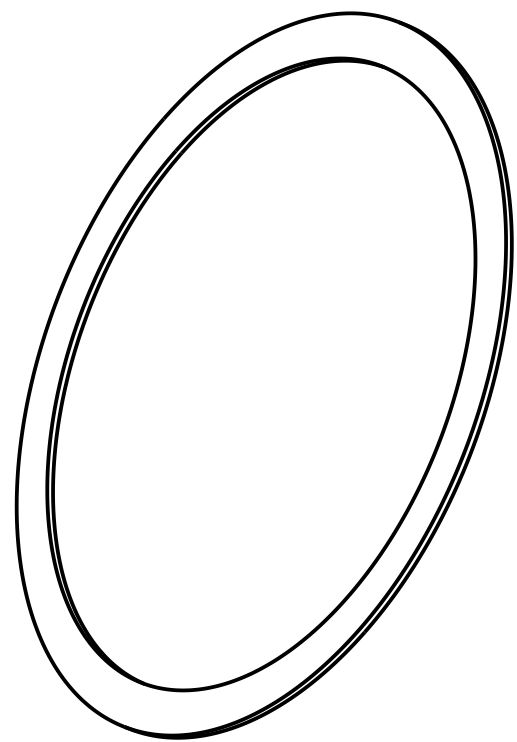


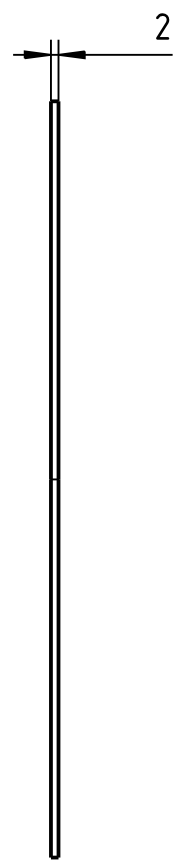
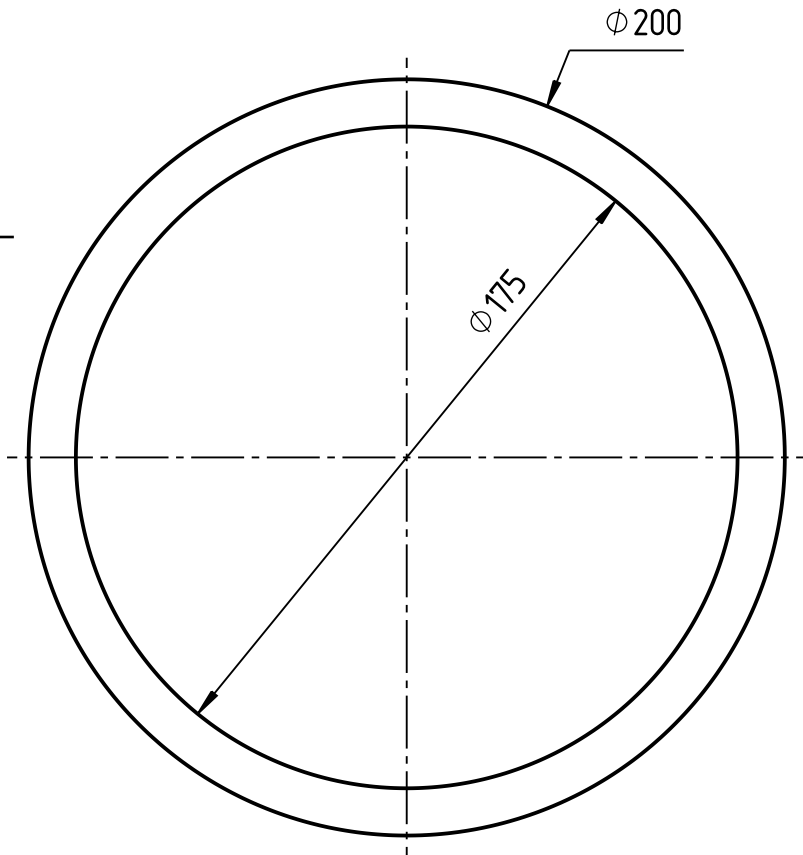
The information contained herein is ALSTOM proprietary information and has been disclosed in confidence to the designated party for specified purposes only. It shall not be used (except for the limited purpose for which disclosure was made), disclosed to others or reproduced without the express written consent of ALSTOM. This notice must appear in any authorized reproduction or abstract of this document.
 ©ALSTOM 2009. All rights reserved.

Dept.	Document No.	Type	Rev.	Released	Lng.	Status
9010	FBR4164654	TC	A	2012-12-17	85	Approved

Vue Isométrique
 Isometric view
 Echelle: 1:2
 Scale: 1:2



POIDS : 0.01 Kg
 WEIGHT



Tolerances of untoleranced dimensions as per NBV A77500

Prepared: 2012-10-24 flcajelo	Resp. department: 9010	ND125 CONTROL VALVE FLAT SEAL JOINT PLAT SPPE MANOSTATIQUE DN125	Format: A4
Review of revision: 2012-12-17 flcavida	Derived from: -		
Approval of revision: 2012-12-17 flcamato	Scale: 1:2		Language: 85
ALSTOM		Document No. FBR4164654	Revision: A
			Sheet: 1/1