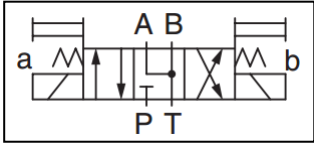


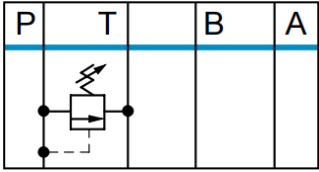
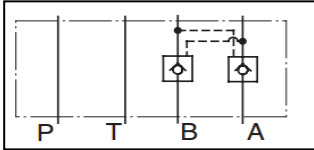
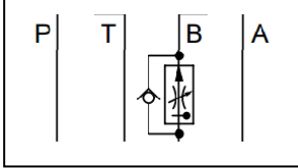
BHEL Bhopal
Block-2(G) Maintenance, FEX/EM

Dear Sir,

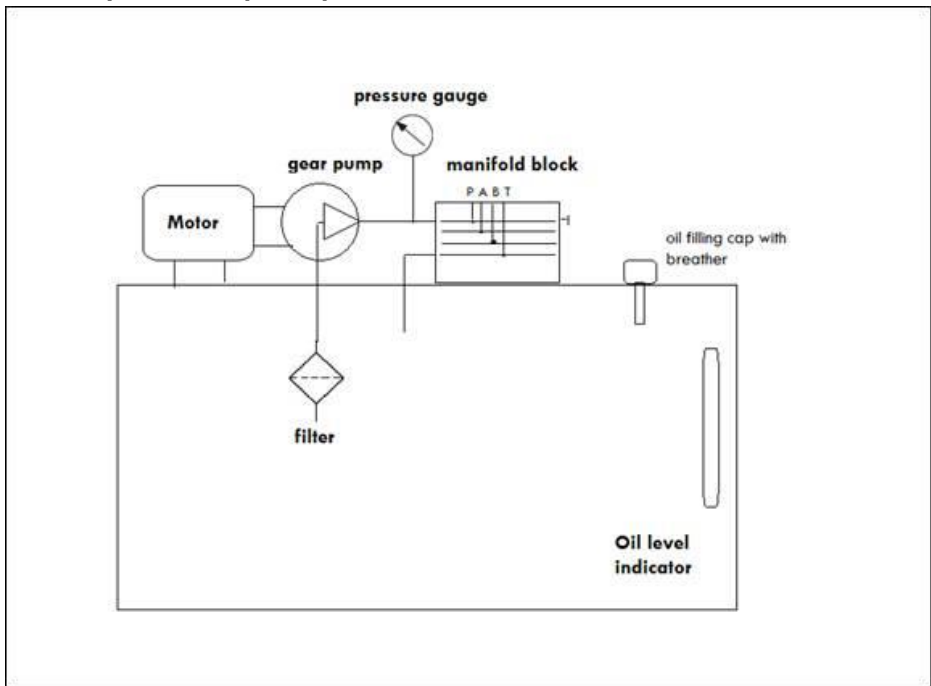
We want to make get a **hydraulic power-pack** made for our saw machine.

Please find the specification of various components contained in the power-pack and send your budgetary quote as soon as possible.

S.NO	ITEM	ITEM DESCRIPTION
1	Hydraulic Cylinder – 1 nos.	Double acting, 5 ton capacity, max. Collapsed height of 250 mm, stroke 160 mm, rod dia 30-40 mm. Trunion type rod end. The cylinder will be mounted through front flange.
2	Hydraulic Tank – 1 nos.	15-20 Litres capacity. Must contains the following features- (a) Air breather cum Oil-refill cap (b) Oil level indicator
3	Electric Motor	0.5 Hp, 1440 rpm, 220 volt AC supply. The motor must be one among- ABB, Siemens, Kirloskar, Havells make only.
4	Gear pump	Gear pump with min. 3 LPM flow and maximum working pressure = 200 Bar. The pump must be coupled to the electric motor using a bell housing and jaw coupling .
5	Suction strainer	Connected to the pump suction line; must be easily replaceable.
6	Pressure gauge	0-150 Bar, 2 1/2" Dial, bottom mounted. – 1 nos. The pressure gauge must be connected to the pressure line using a gauge isolator.
7	Manifold block	Number of service stations = 1, suitable for mounting YUKEN 01 series modular valves or equivalent valves (i.e. having mounting surface = ISO 4401-AB-03-4-A).
8	Solenoid controlled direction valve	Maximum flow = 90 LPM, 3 position, spring centered, AC 240 volt supply coil, plug in connector type with indicator light option. 

9	Solenoid controlled modular pressure relief valve	<p>1/8" modular design valve with pressure relief for pressure line. Maximum operating pressure = 315 Bar. Maximum flow = 35 LPM.</p> 
10	Pilot operated double check valve	<p>Maximum flow = 35 LPM, maximum operating pressure = 315 Bar, pilot operator check valve for A and B lines.</p> 
11	Flow control valve	<p>Maximum flow = 35 LPM, maximum operating pressure = 315 Bar, flow control valve for B line.</p> 
<p>NOTE: Connection pipes (pump suction, pump to manifold block, manifold block to tank) must be rigid steel construction (no hose pipes).</p>		

Basic Layout of the powerpack:



Circuit diagram for the hydraulic system of the powerpack:

