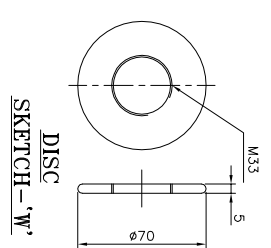
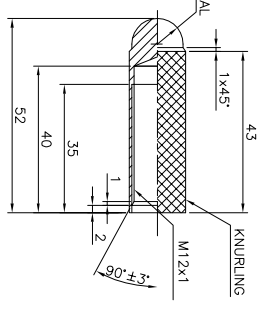
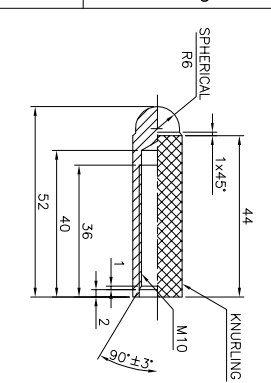


SKETCH - 'Z'



SCALE 1:2

NOTE :-

1. $\phi 33$ MAY BE BUILTUP ON MACHINED ROD OF $\phi 28$ FROM 28 TK. LAMINATE BY WRAPPING FIBRE GLASS CLOTH WITH RESIN & HARDNER ALTERNATELY THE ITEM MAY BE MACHINED FROM 33 TK. LAMINATE.
2. 0.5% OF THE OPERATING ROD MINIMUM 1 PER MANUFACTURING LOT SHALL BE TESTED FOR TENSILE STRENGTH AT THREADED INSERTS TILL RUPTURE $F \geq 3000$ KG & 75 KV ONE MINUTE P.F. TEST ACROSS INSERT.
3. MATERIAL FOR INSERTS--HT BRASS (A412117).
4. COMPONENTS TO SKETCH X & Y ARE FOR REFERENCE ONLY.
5. APPLY ANTI-TRACKING VARNISH ON ALL SURFACE AFTER MACHINING.
6. VISUAL TEST - FREE FROM CRACK 100%.

INVENTORY NO.	SIGN AND DATE	REF. DRG. NO.
REV. DATE	ALTERED	CHECKED
APPROVED		
REV. DATE	ALTERED	CHECKED
APPROVED		
REV. DATE	ALTERED	CHECKED
APPROVED		

ST 942398	008	306 G. FROM 3000 FIBRE LAMINATE WITH HARDNER BRUSH INSERT
VAR00	VAR1 ITEM NO.	DESCRIPTION
58	59	60
77	79	81
82	83	84
85	86	87
88	89	90
91	92	93
94	95	96
97	98	99
100	101	102



OPERATING ROD

2 521 10 01574