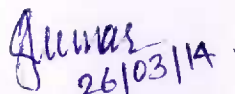




Technical Pre – Qualifying criteria for “Multiple Bonded Sandwich Mounting”

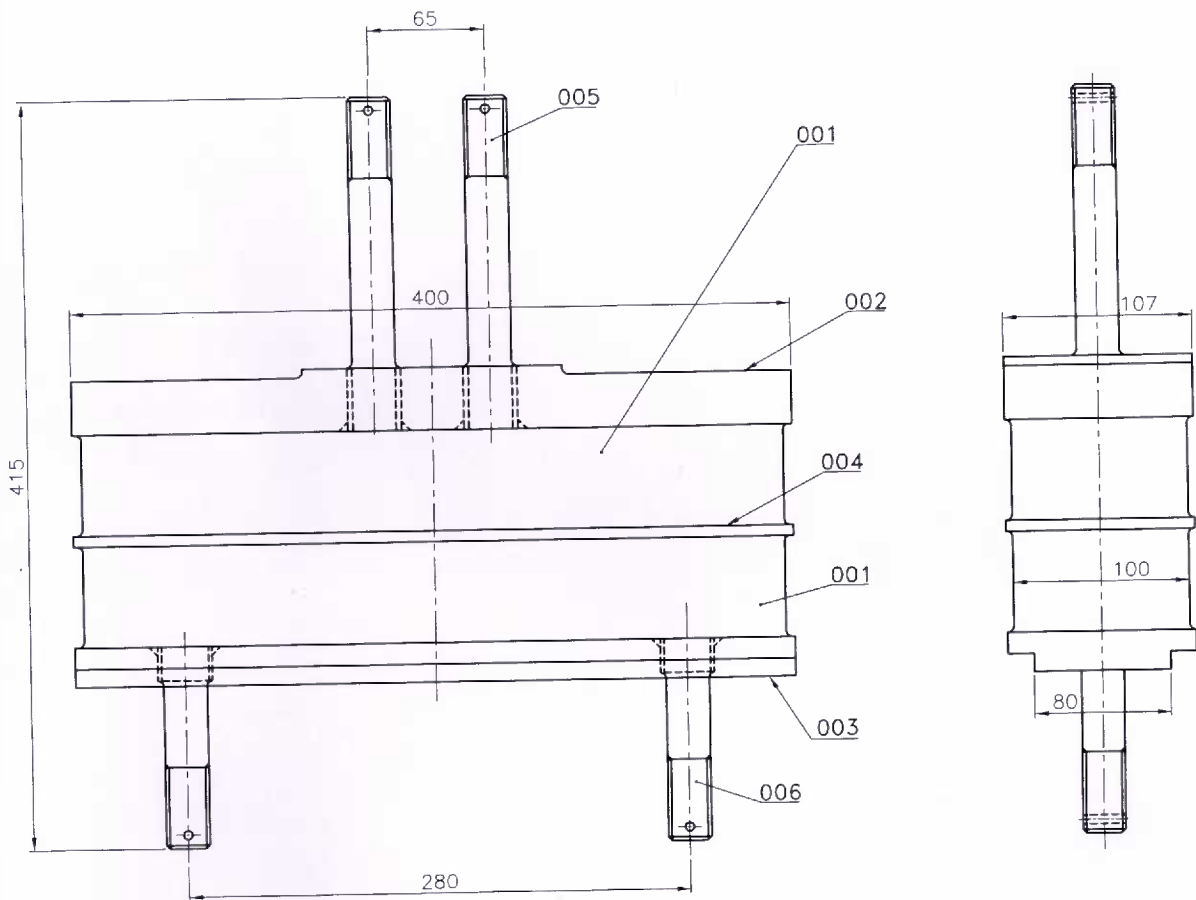
The pre-qualification criteria for “Multiple Bonded sandwich Mounting” are as under:

1. Supplier to confirm manufacturing of MULTIPLE BONDED SANDWICH MOUNTING similar to sketch- TME/SKETCH/1034 and in compliance with material specification called in the sketch.
2. Supplier to furnish drawing and specification of MULTIPLE BONDED SANDWICH MOUNTING similar to BHEL sketch earlier manufactured by it.
3. Supplier to have experience of supply of similar items to OEM of traction motors or Indian railways. Supplier to furnish names of customers with details of supply of Multiple Bonded sandwich Mounting similar to Sketch TME/SKETCH/1034 and material specification in last 3 years.
4. Supplier to furnish source of procurement of following items which are used for the manufacturing of Multiple Bonded sandwich Mounting:
 - i) Rubber
 - ii) MS plate
 - iii) Special Bolt


Jitendra Kumar
Engg./TME


Anurag Sharma
Sr. Engg./TME


Sharad Mehrotra
DGM/TME



006	BOLT	IS:5517-2004
005	BOLT	IS:5517-2004
004	INSERT-6THK.	IS:2062
003	PLATE-22THK.	IS:2062
002	END PLATE-36THK.	IS:2062
001	RUBBER-56THK.	JIS-KG386 A(11)

DESCRIPTION:- MULTIPLE BONDED SANDWICH MOUNTING
 SKETCH NO.:- TME/SKETCH/1034
 DATE:- 25.03.14