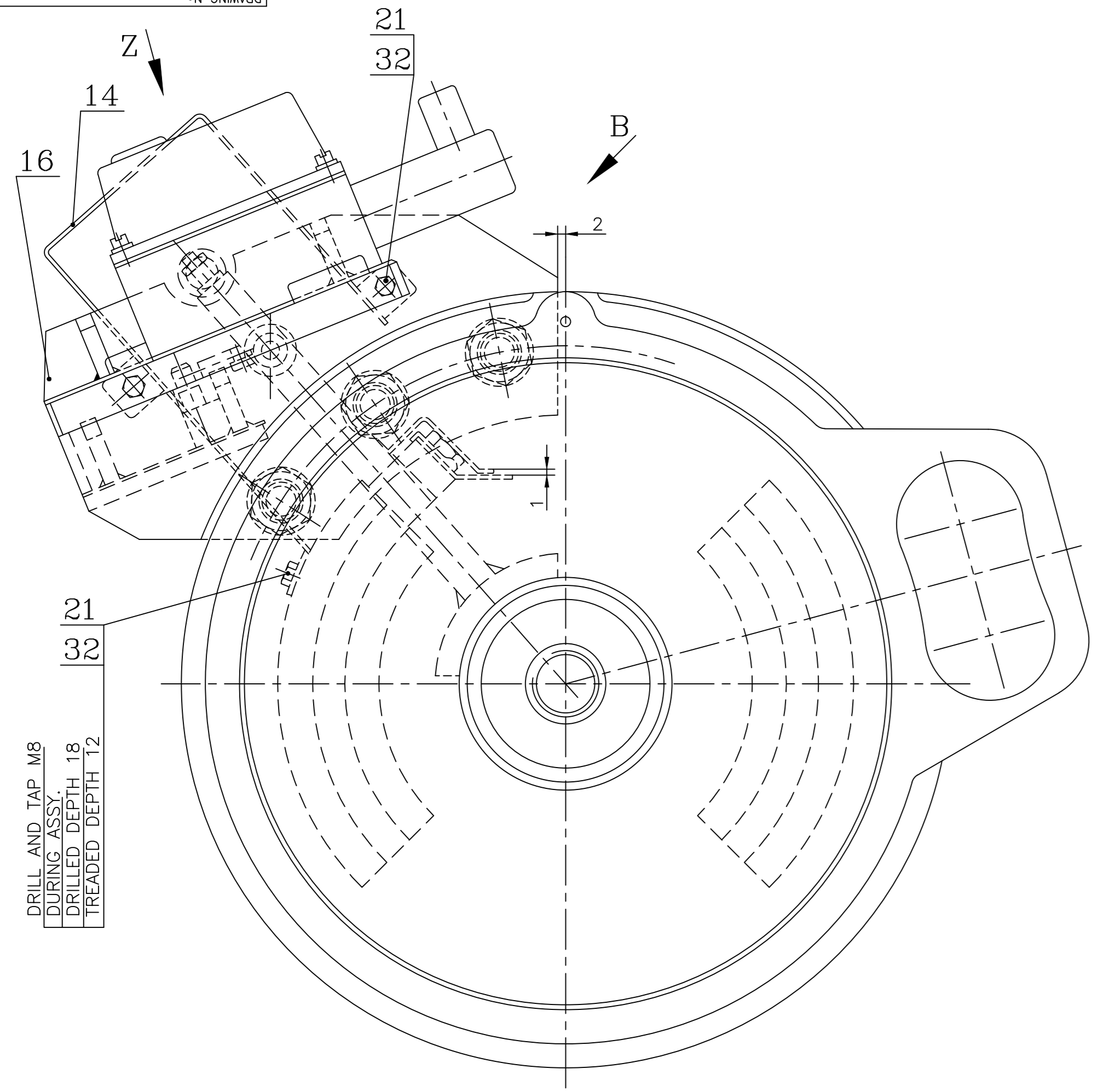
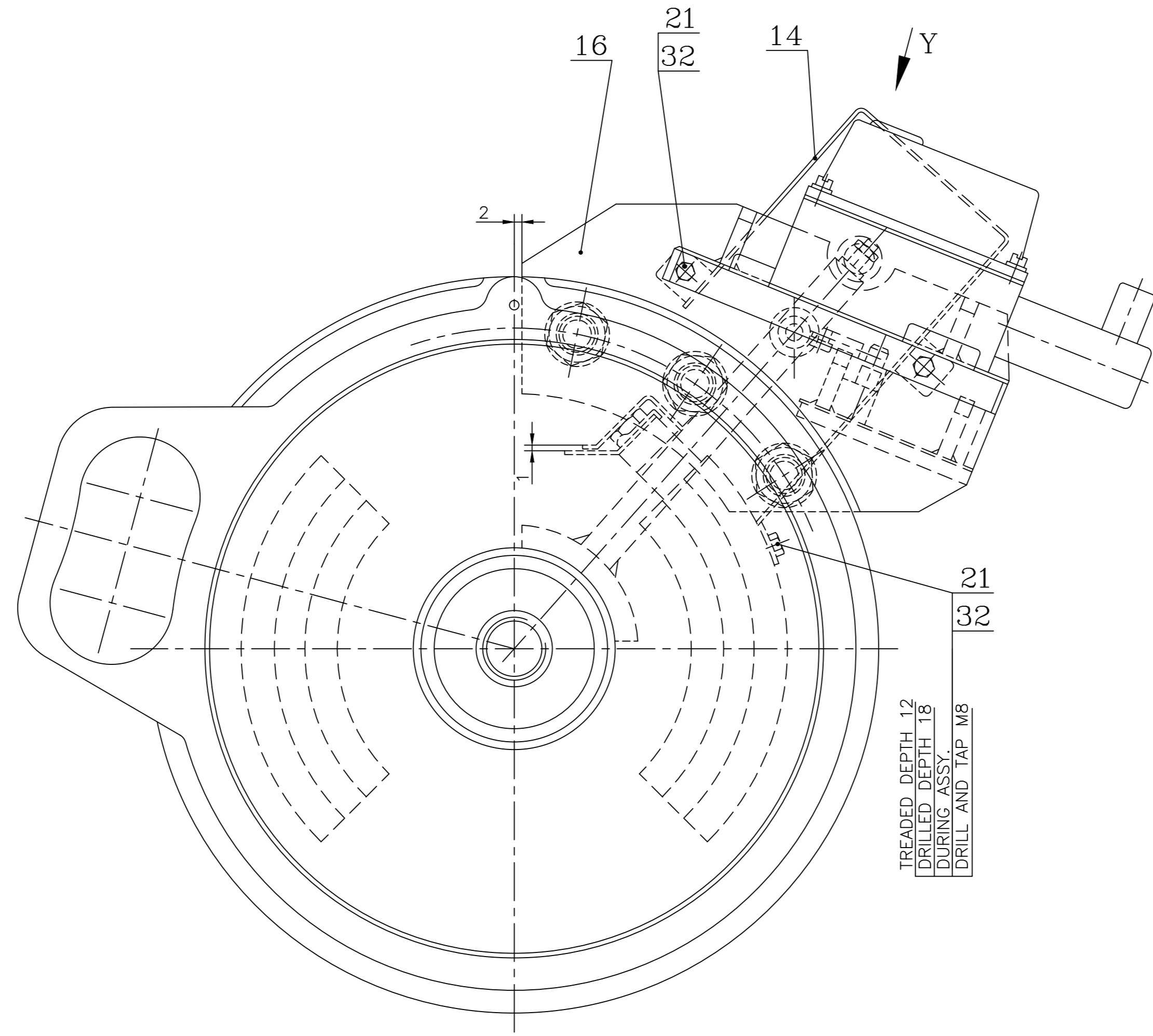


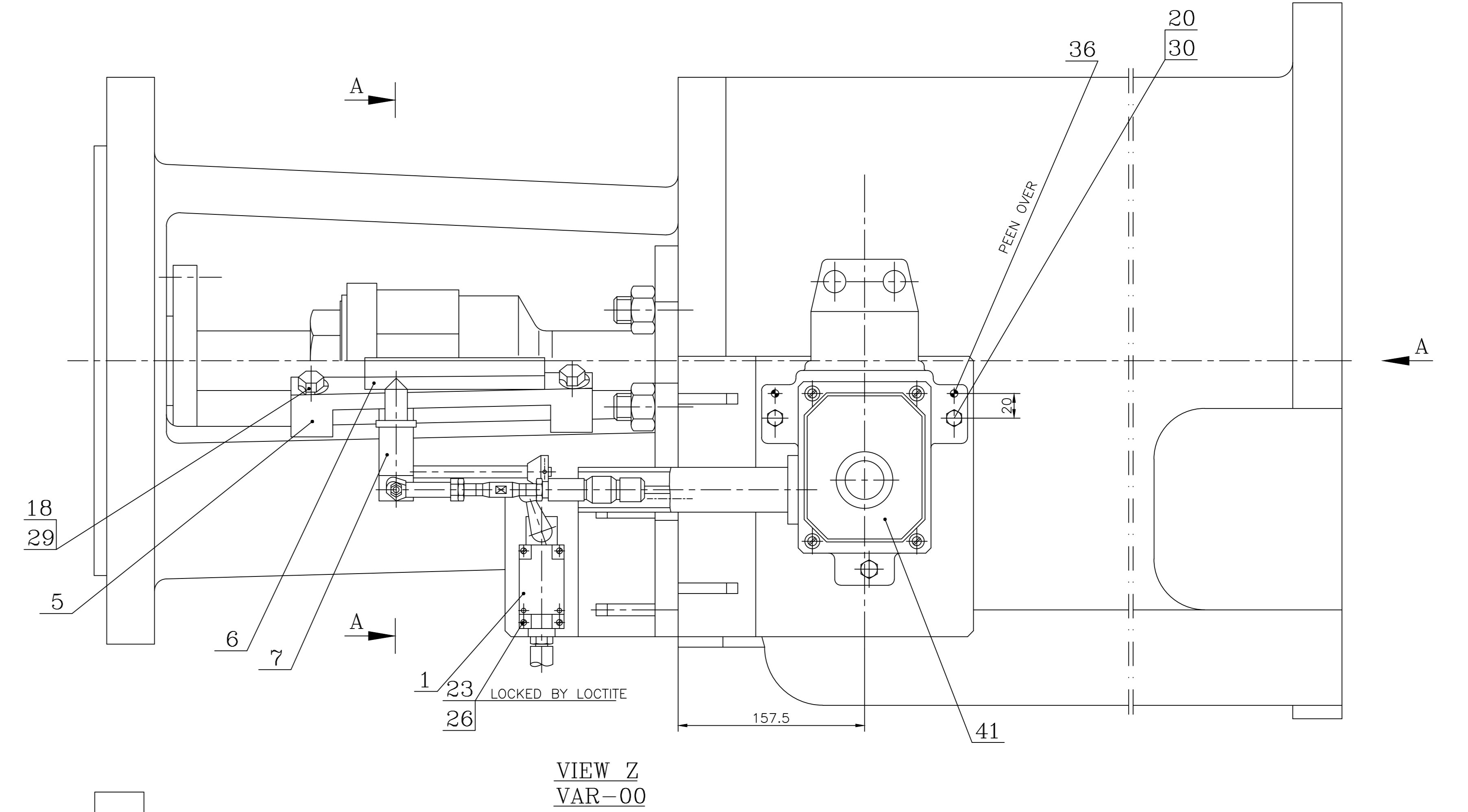
00010-9E8E1-0



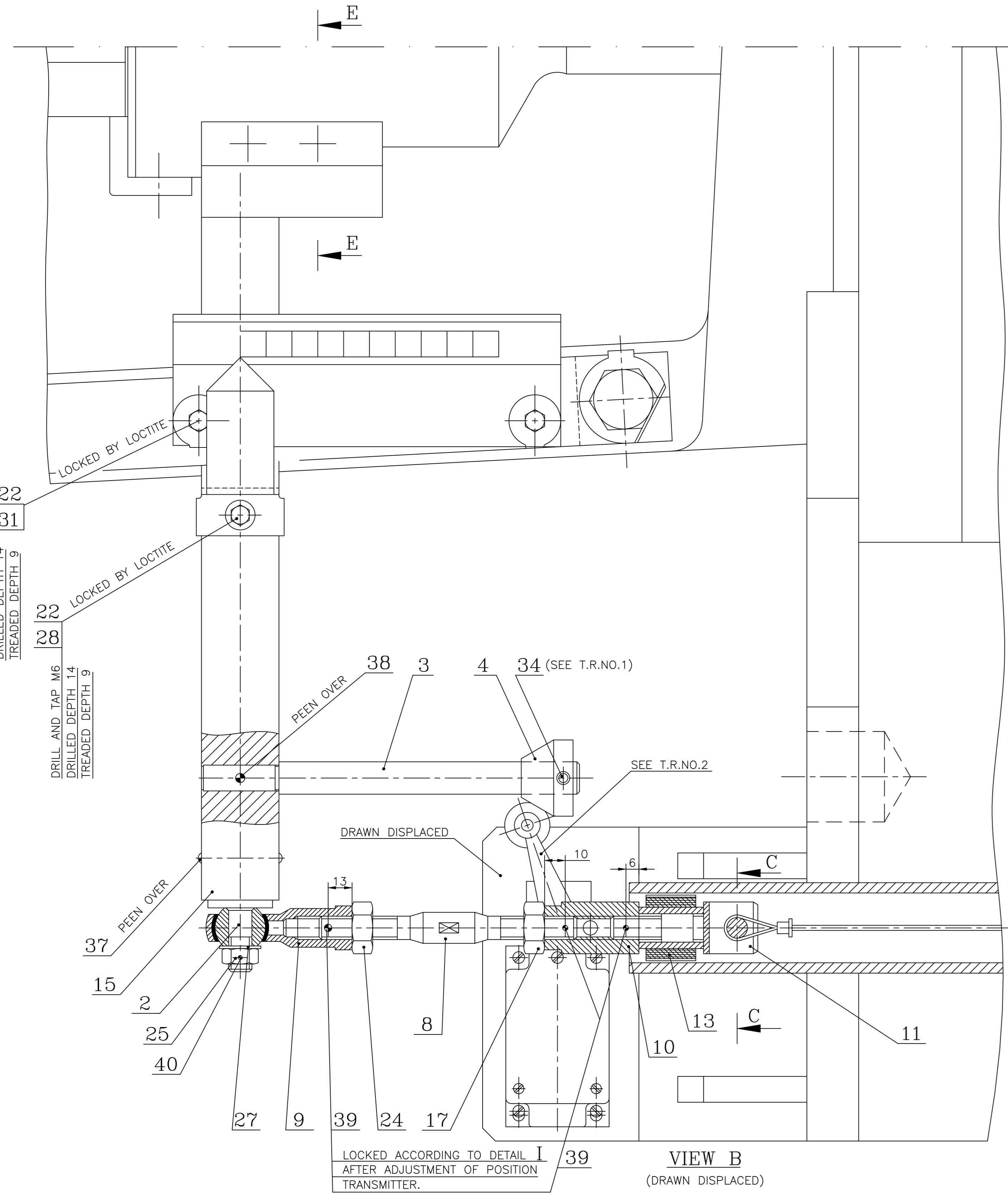
VAR-00
VIEW A



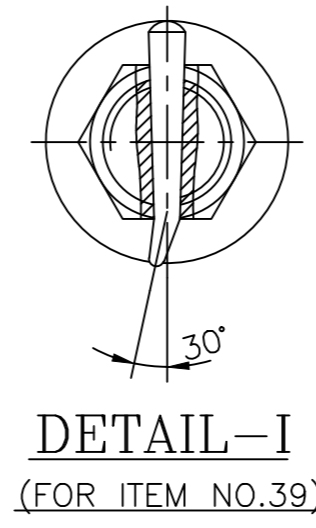
VAR-01
VIEW C



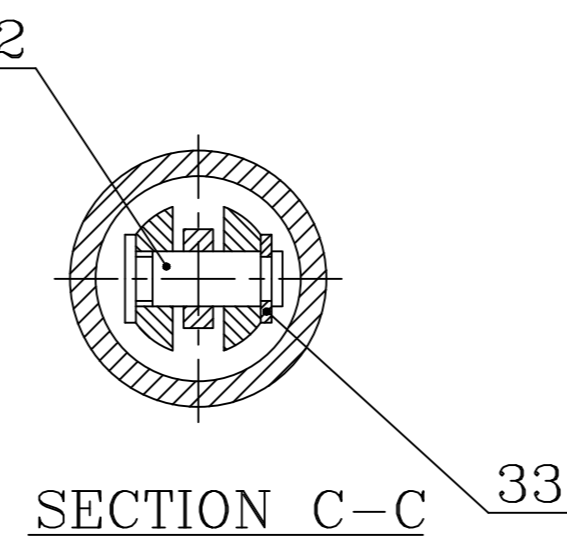
VIEW Z
VAR-00



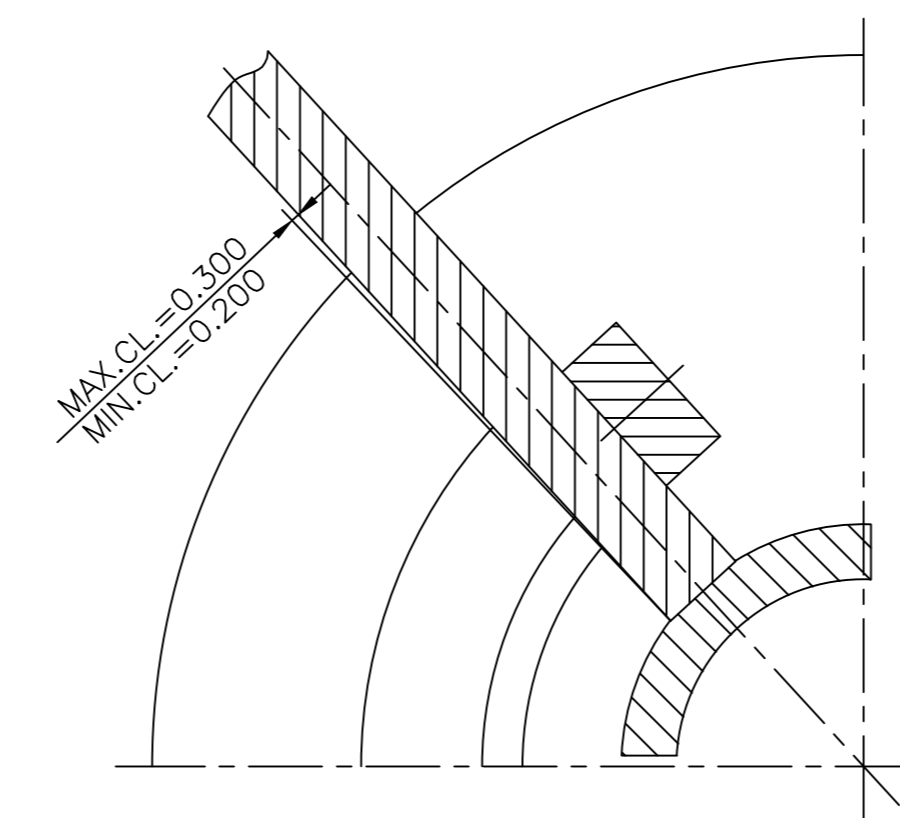
VIEW B
(DRAWN DISPLACED)



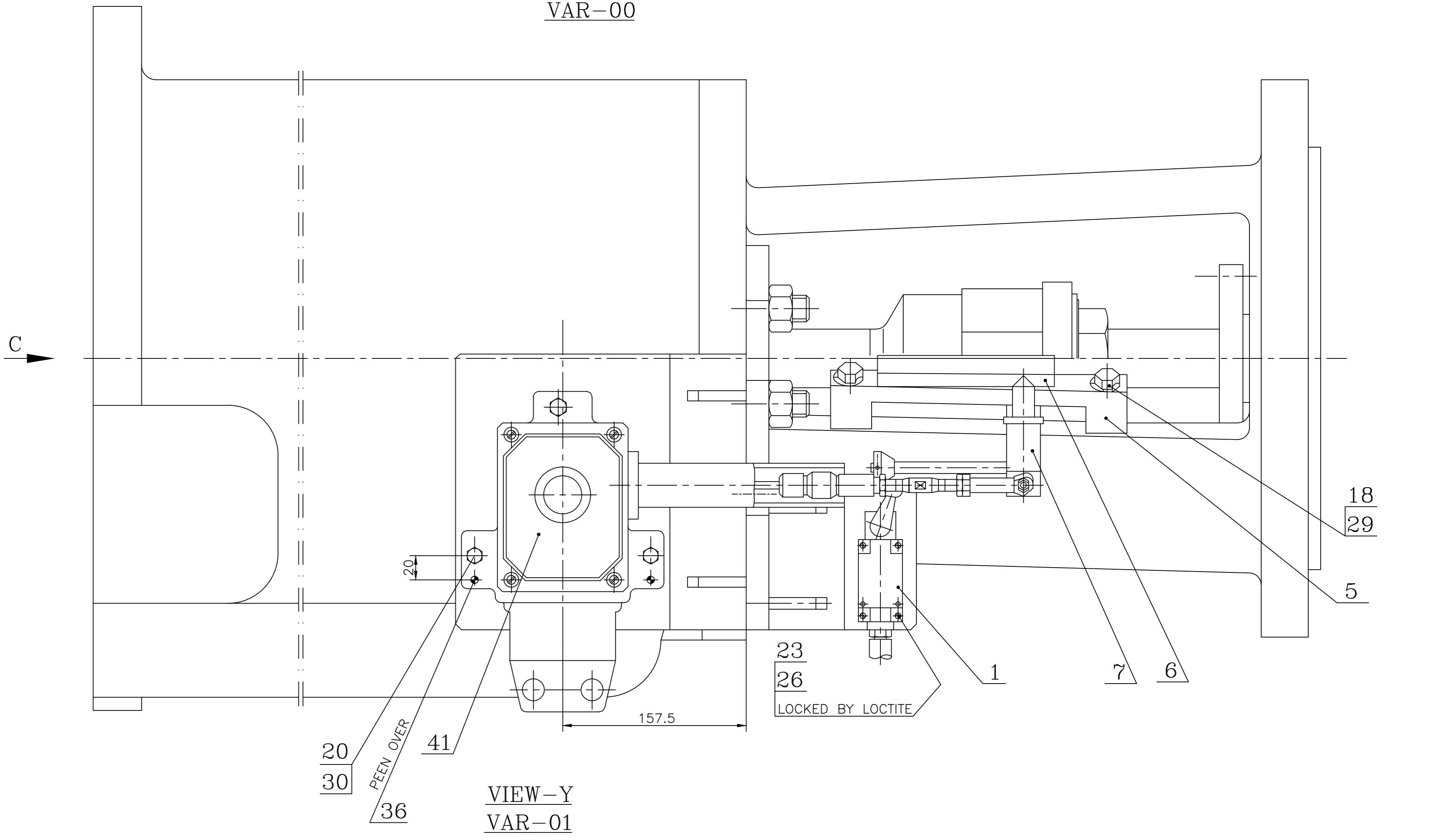
DETAIL-I
(FOR ITEM NO. 39)



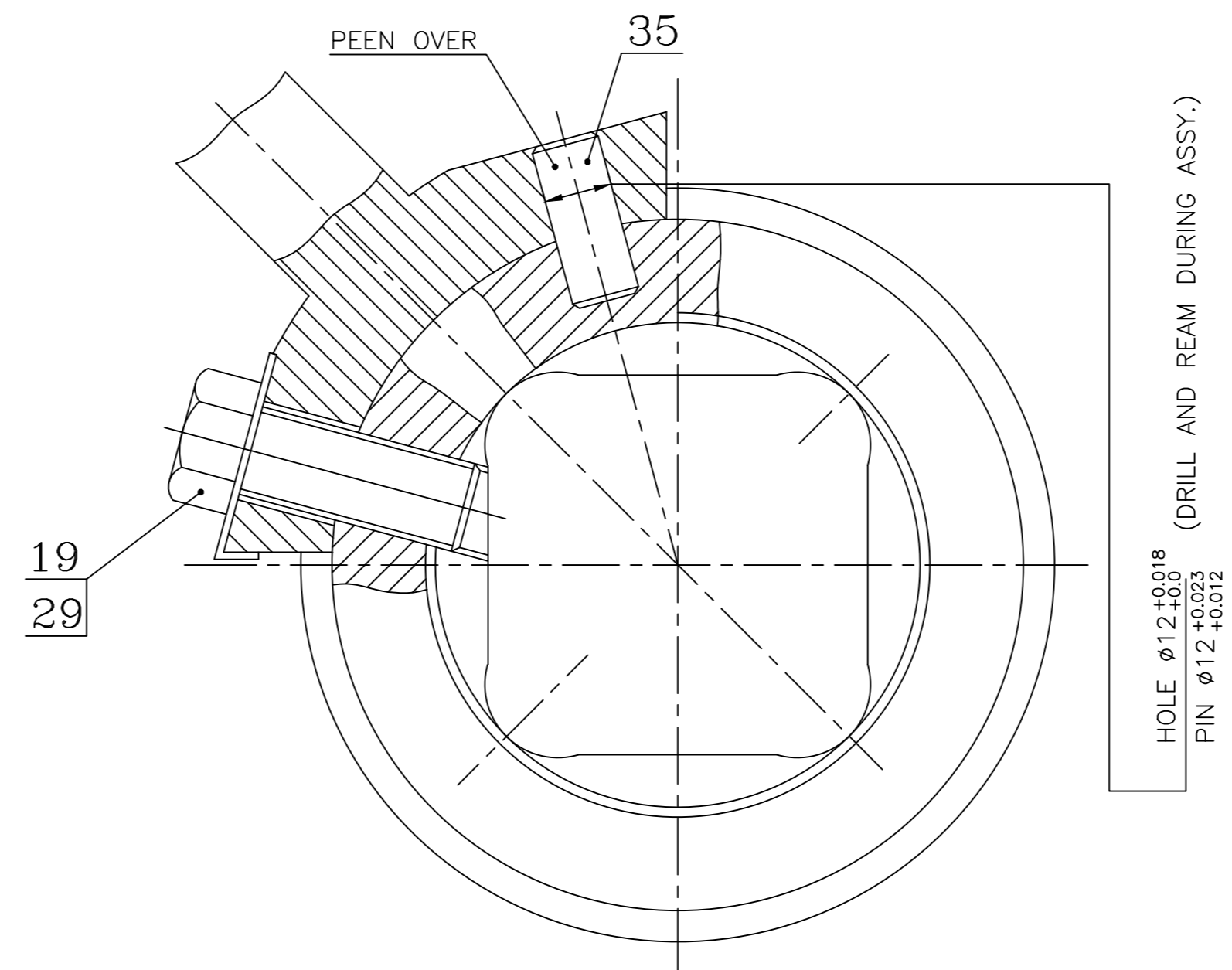
SECTION C-C 33



SECTION A-A



VIEW-Y
VAR-01



SECTION E-E

TECHNICAL REQUIREMENTS :-

- 1. ITEM NO.3 IS TO BE DRILLED 2mm DEEP FOR ITEM NO.34 AFTER MATCH MARKING WITH ITEM NO.4 DURING ASSEMBLY. PEEN OVER AFTER FITTING ITEM NO.34.
- 2. ADJUSTMENT OF SWITCHING POINT OF LIMIT SWITCHES 3mm AHEAD OF CLOSE POSITION OF VALVE.

C.B.O.M No. 01333601000		STATUS OF Dwg	TYPE OF PRODUCT OR NAME OF CUSTOMER/PROJECT	STEAM TURBINE	
DESIGNED REF	NAME N.TANEJA	DATE 23.08.80	APPROVED G.K.D.	DATE 15.09.80	
GRADE OF UNTOL.DIM M/CG.-G/M/F AA023020B WELDING-K/B/B/B AA0621104 GAS CUTTING-T3'AA0621101			Bharat Heavy Electricals Ltd RANIPUR, HARDWAR		
REV	DATE	ALTERED	M.S.Bisht	SCALE 1:1	WEIGHT (KG) 38.00
02	27.07.08	CHECKED	N.R.De	REF. TO ASSY. DRG. 0-13336-01000	ITEM NO. 041
This drawing supersedes the old drawing under same no. with change and deposited on Wrench.					
TITLE : POS. TRANS. MTG. ON IP CVS					
DRAWING NO. 0-13336-01000					
SHEET No. 01 No. OF SHEETS 01					

COPYRIGHT AND CONFIDENTIAL INFORMATION ON THIS DOCUMENT IS THE PROPERTY OF BHARAT HEAVY ELECTRICALS LIMITED. IT MUST NOT BE USED DIRECTLY OR INDIRECTLY IN ANY MANNER DETRIMENTAL TO THE INTERESTS OF THE COMPANY.

7280-05240g
SHEET No. 01