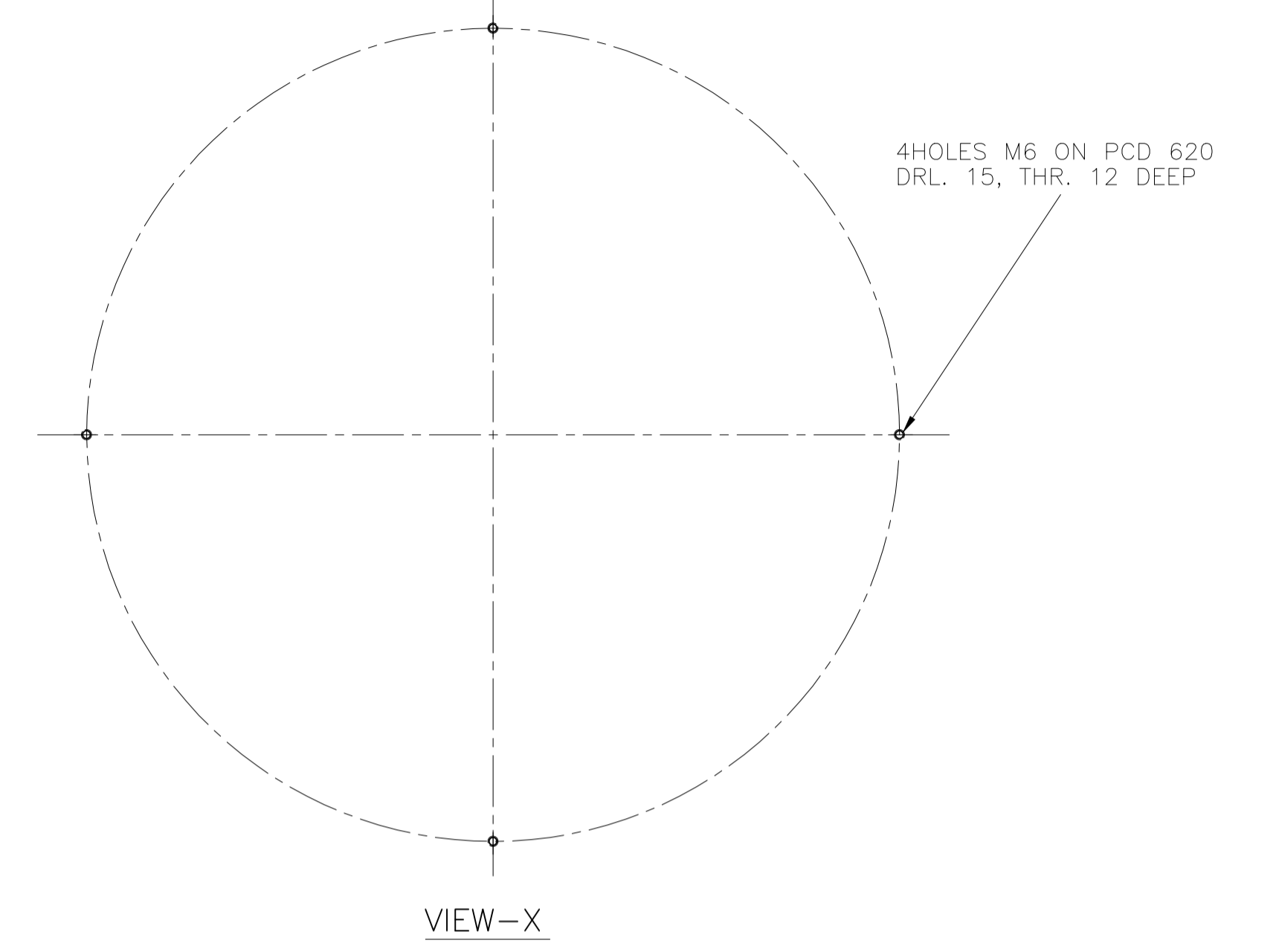
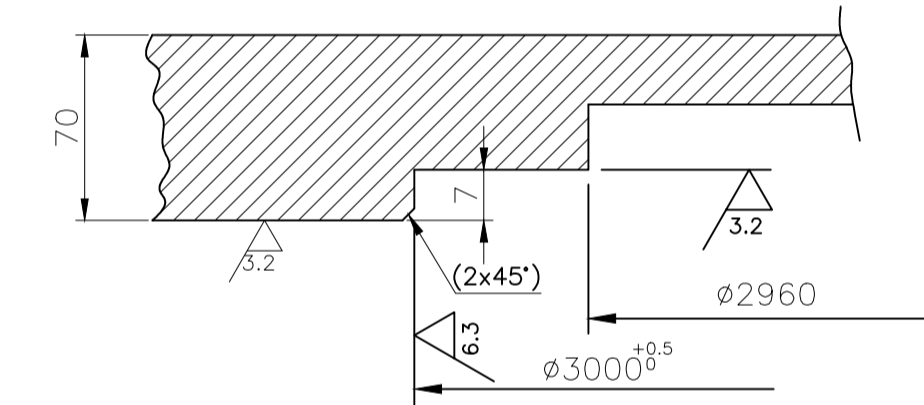


DETAIL-Z

TOOL LIST		
IT.	TOOL NO.	DESCRIPTION
		COMMON MOT FOR ALL HOLES ON PC ϕ 1650
		COMMON MOT FOR HOLES ϕ 40 AND M36 ON PC ϕ 3400 LOCATION FROM CENTRE



VIEW-X

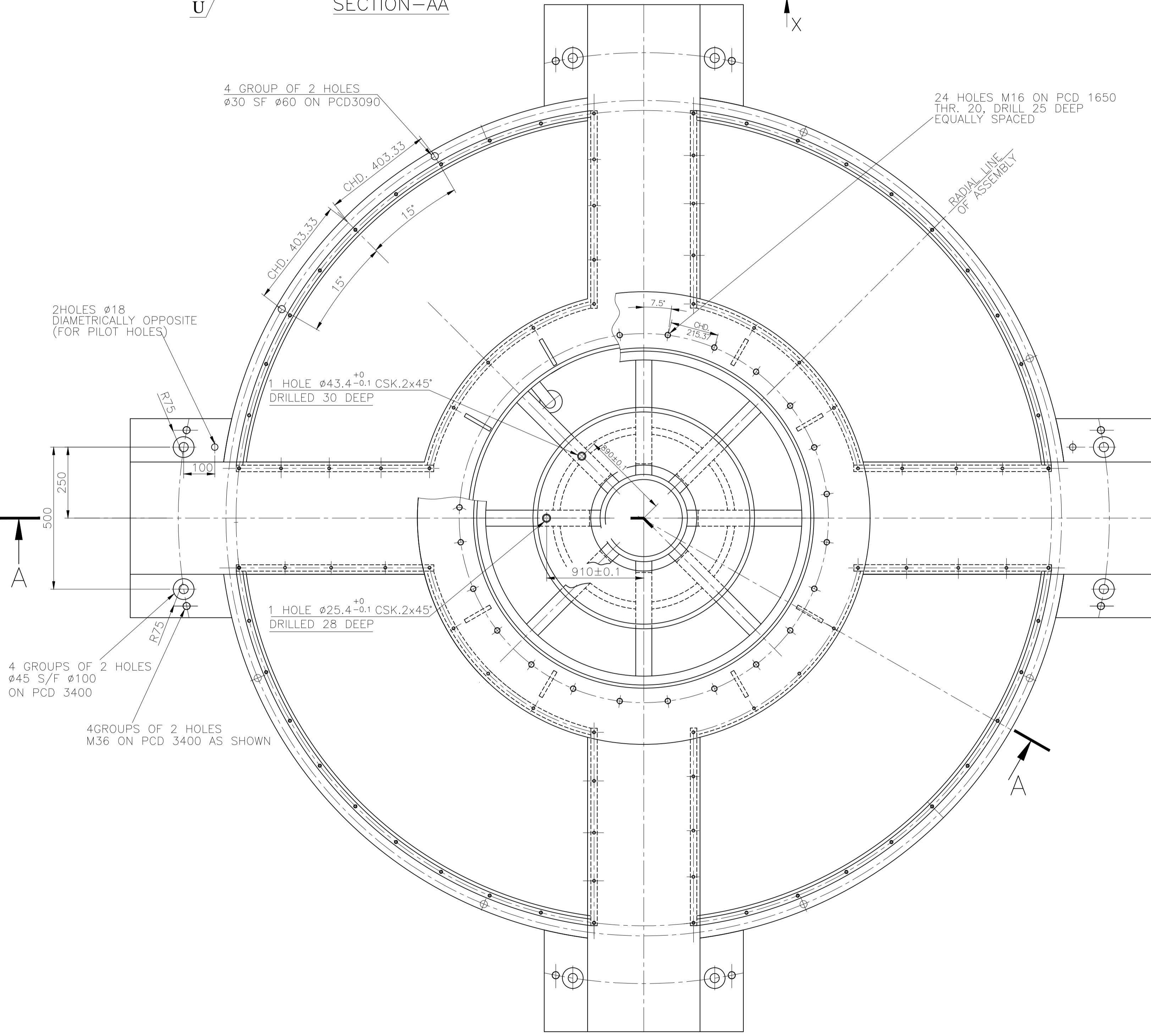


DETAIL-U

TECH. REQUIREMENTS:-

- 4HOLES M6 IN VIEW-X SHALL NOT BE MADE THROUGH.
- DIMENSIONS WITHIN BRACKETS ARE BEFORE MACHINING.
- INTERNAL SURFACES SHALL BE COATED WITH OIL RESISTANT ENAMEL WITH PROCEDURE AS PER AM54173.

GES.NO. 404210602 VAR.00



01	GES. NO. 404210550	01	UPPER BRACKET (FAB)	14025440040	00	6300
VAR 00	REMARKS	VAR NO.	ITEM NO.	DESCRIPTION	DRAWING NO.	UNIT WT.
28	CARD TYPE-3	28	CARD TYPE-1	28	CARD TYPE-2	28

ADDITION INFORMATION W.O. 45061 P 423-11 STATUS OF DRAWING		TYPE OF PRODUCT OR NAME OF CUSTOMER/PROJECT M/S. MEGHA ENGG. & INFRA LTD. SSNNL PS-2 & 3	
DISTRIBUTION OF PRINT OC-1 TEX-3 FMM-3		Bharat Heavy Electricals Ltd. Bhopal	
REV	DATE	ALTERED	RV
01	22.06.16	CHECKED	AK
ZONE		APPROVED	
E-4			
1 HOLE $\phi 43.4^{+0}$ CSK.2x45° DRILLED 30 DEEP ADDED.		TITLE UPPER BRACKET (MACHINING)	
DRAWING NO. 14025440041		REV. 01	
SHEET NO. 01		NO. OF SHEET 01	

THE INFORMATION ON THIS DOCUMENT IS THE PROPERTY OF BHARAT HEAVY ELECTRICALS LIMITED. IT MUST NOT BE USED DIRECTLY OR INDIRECTLY IN ANY WAY DETRIMENTAL TO THE INTEREST OF THE COMPANY.

INVENTORY NO. 14025440023
SIGN. & DATE

RV/BRG./14025440041