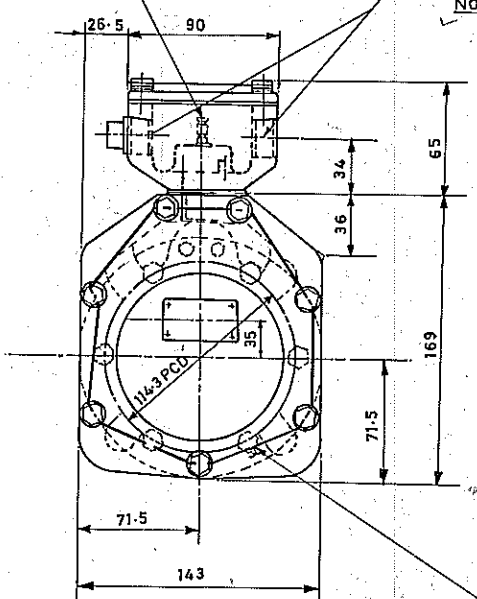


2-M4 SCREWS FOR OUT GOING CONNECTIONS



1/4 BSP TAP FOR HOSE COUPLING FOR ELECTRICAL CONNECTIONS. EITHER SIDE MAY BE USED. OPPOSITE SIDE IS TO BE PLUGGED. NOZZLE LGTH. 35 ± 3 (NOT SHOWN)

AXLE END CAP ALCO DRG NO 11256520

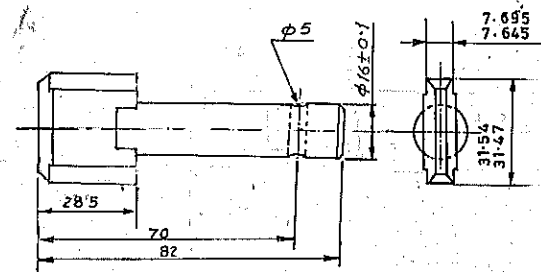
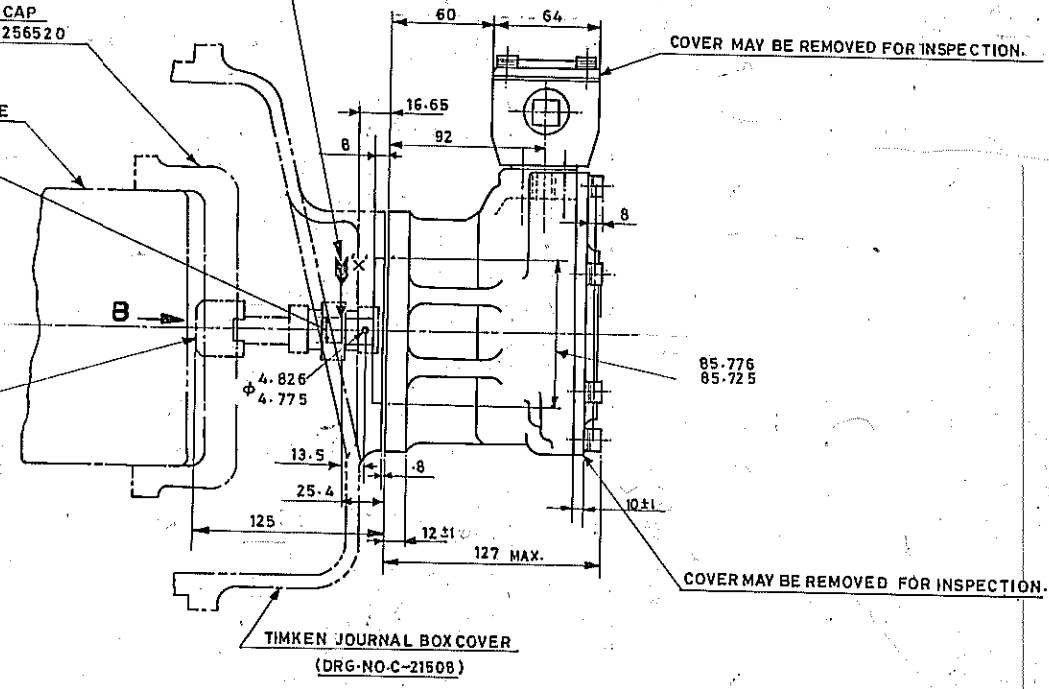
AXLE 15.918 15.905

SPLINE-SEE ENLARGED VIEW 'A' LUBRICATE SPADE & DRIVE COMB. WITH GREASE WHEN ASSEMBLING.

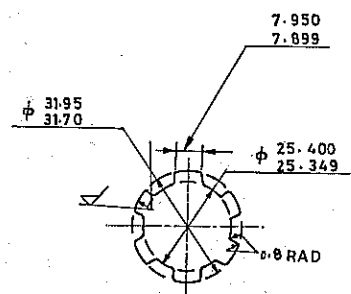
6 MOUNTING BOLTS M10 MUST BE TIGHTENED TO 3.5 TO 4.2 KGM TORQUE

RADIAL LOAD ON SHAFT AT THE ARROW 'X' NOT TO EXCEED:

- 57 KGS. AT 500 RPM
- 45 KGS AT 1000RPM
- 32 KGS AT 3000 RPM



ENLARGED VIEW 'A' OF SPLINE



VIEW IN DIRECTION OF ARROW 'B' (ENLARGED) BROACHED HOLE IN AXLE END CAP.

NOTE:-

- THE SUPPORTS FOR THIS DEVICE MAY BE EARTHED.
- WEIGHT OF COMPLETE SET: 6 KG. APPROX.
- AG 903 BY WITH IMPORTED STATOR & ROTOR
- AG 903 CX WITH COMPLETELY INDIGENOUS COMPONENTS.
- AG 903 CX/M METRICATED MACHINE.

VAR NO	REMARKS	ITEM NO	DESCRIPTION	DRAWING NO	MATL CODE	UNIT WT.
VAR		VAR			MATL. SPCH.	QTY
ADDITIONAL INFORMATION			TYPE OF PRODUCT OR NAME OF CUSTOMER/PROJECT			
STATUS OF DRAWING			AG 903 BY/CX/M INDIAN RAILWAYS			
DISTRIBUTION OF PRINTS			BHPAL			
REV	DATE	ALTERED	DEPT	GRADE OF EXEC	SCALE	WEIGHT (kg)
01	5.195	CHECKED			N.T.S	6
ZONE DIMENSIONS ROUNDED UP			TITLE			
			O U T L I N E AXLE GENERATOR			
			DRAWING NO. 1 438 00 20 001			
			PAGE NO. 1 OF 1			

THE INFORMATION ON THIS DOCUMENT IS THE PROPERTY OF BHARAT HEAVY ELECTRICALS LIMITED. IT MUST NOT BE USED DIRECTLY OR INDIRECTLY IN ANY WAY DETRIMENTAL TO THE INTEREST OF THE COMPANY.

INVENTORY NO. SIGN & DATE REF. DRG. NO. 14625407