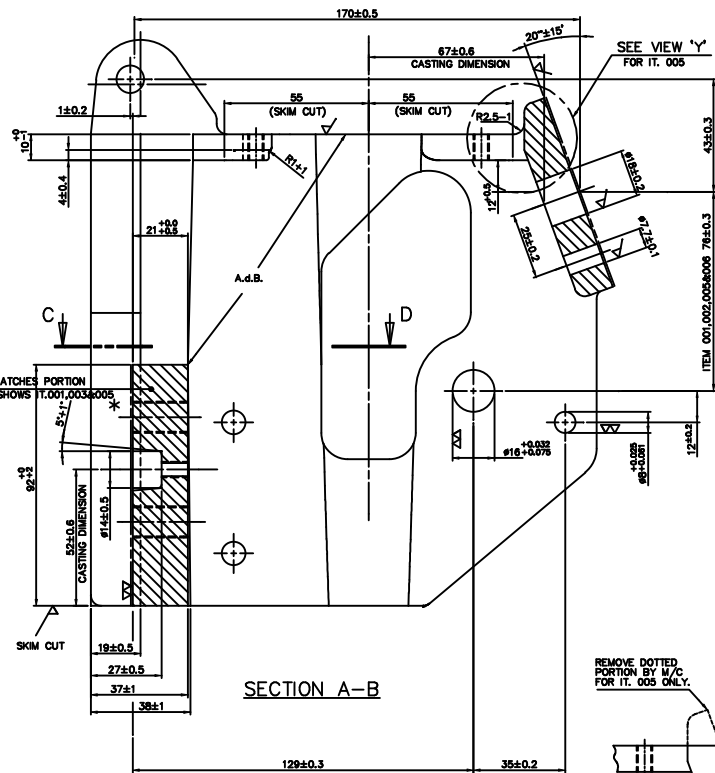
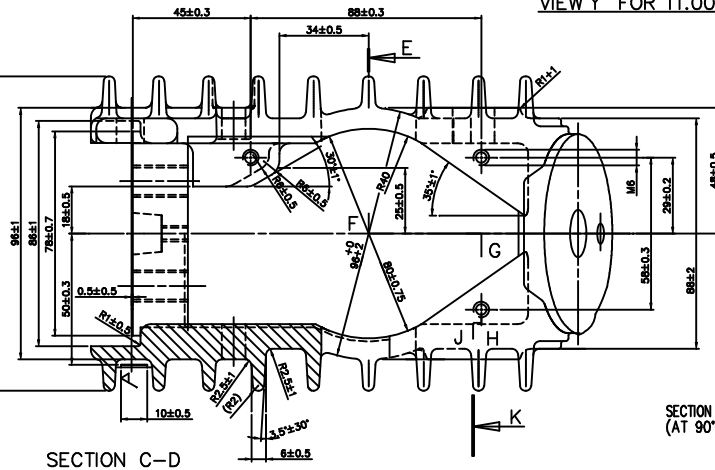


11210 10 01511

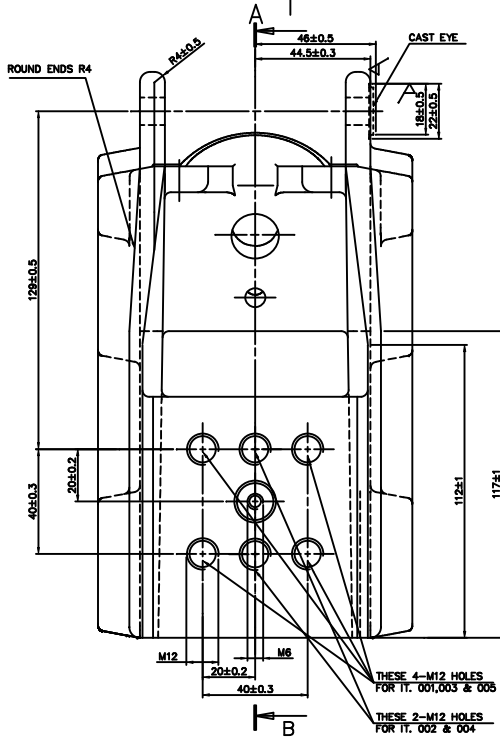


SECTION A-B

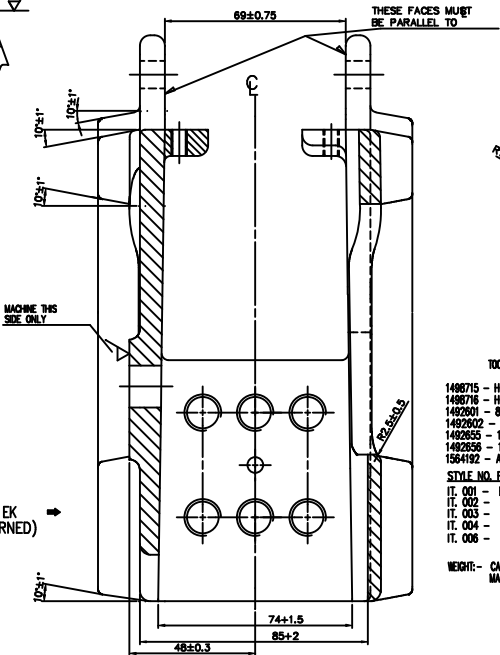


SECTION C-D

SECTION - EK (AT 90° TURNED)



VIEW Y FOR IT.005



VIEW-X

TOOL LIST

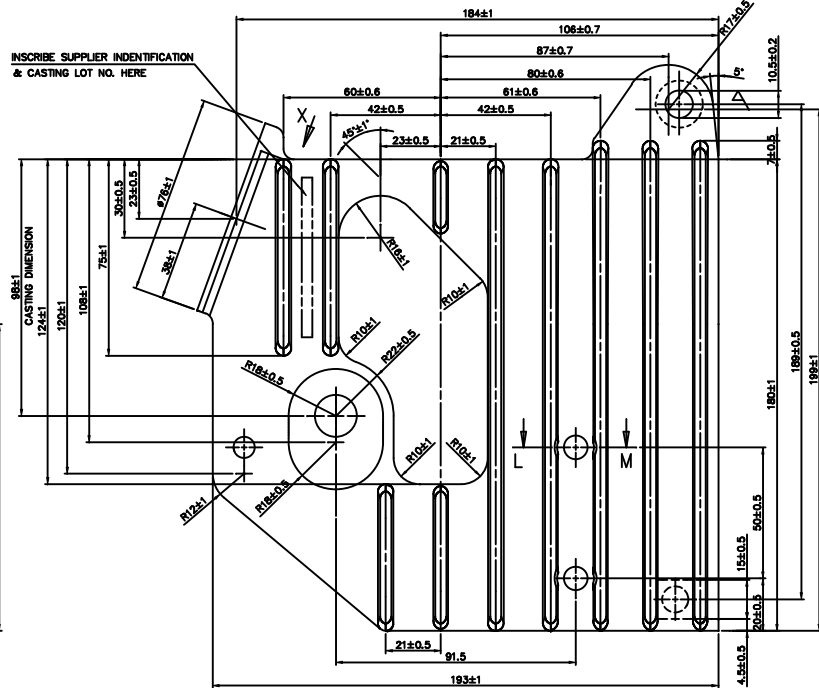
- 149875 - HOLDING FIXTURE FOR M.C.
- 149876 - HOLDING FIXTURE FOR M.C.
- 146201 - 8 EG REAMER
- 1492602 - EG PLUG GAUGE.
- 1492635 - 16 EG REAMER
- 1492636 - 16 EG PLUG GAUGE.
- 1554192 - AUXILIARY BASE FOR CNC.

STYLE NO. FOR MACHINING
 IT. 001 - BP 909948571
 IT. 002 - BP 909948590
 IT. 003 - BP 909948598
 IT. 004 - BP 909948601
 IT. 005 - BP 909911215

WEIGHT - CASTING - 2.51 KG.
 MACHINED - 2.33 KG.

(DCA-26832)

(DCA-31677)



SECTION L-M

001002003004005

PATT. NO. FOR IT. 001 TO 004 - 12990398
 UNSPECIFIED RADIUS R = 4 1/2

NOTE:- 1. FOR QUALITY CHECKS & ACCEPTANCE CRITERIA REFER PRODUCT STANDARD SG 12722.
 FINISH:- AFTER DEGRASSING APPLY ONE COAT OF BLACK PAINT TO AA 56139 AS PER PAINTING PROCESS BP0674174 (EXCLUDING MACHINED AND GATED FACES)

BP930911224	006	AL. ALLOY CHILLED GRAVITY DIE CASTING					2.33
BP9099489756	005	POLE HEAD MACHINED	15211001511	001			001
ST 943152	004	AL. ALLOY CHILLED GRAVITY DIE CASTING		SG 12722			2.51
ST 943151	003	AL. ALLOY CHILLED GRAVITY DIE CASTING		SG 12722			2.51
ST 943150	002	AL. ALLOY CHILLED GRAVITY DIE CASTING		SG 12722			2.51
ST 943149	001	AL. ALLOY CHILLED GRAVITY DIE CASTING		SG 12722			2.51
VAR 00	00	REMARKS	DRWING NO.	28	29	30	31

25 - CMM TYPE-3
 26 - CMM TYPE-2

STATUS OF DRAWING	BI	ADDITIONAL INFORMATION	3 SPECIFIC OR WORK CHG
DISTRIBUTION OF PRINTS		TYPE OF PRODUCT OR NAME OF CUSTOMER/PROJECT	VCB
OC			
SWM	1		
TCX	3		

REV. DATE ALTERED P.P.ARE
 11 30.03.07 CHECKED KSK
 APPROVED M.A.ZAM
 DIM. 76 ADDED FOR IT-005.
 NOTE FOR PAINTING CHANGED.

REV. DATE ALTERED P.P.ARE
 12 14.08.13 CHECKED AKH
 APPROVED M.A.ZAM
 DIM. 409 AA 0230208
 409/7 TITLE

DRWING NO. 15211001511
 DRAFTER NAME SIGN DATE
 MZG 22.9.82
 SPN/RKG 28.9.82

006 TO 009

1 521 10 01511