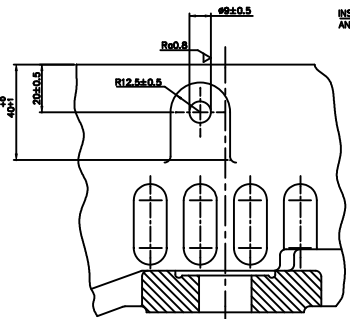
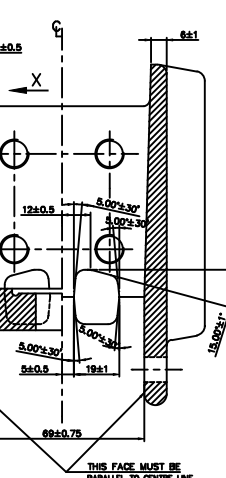
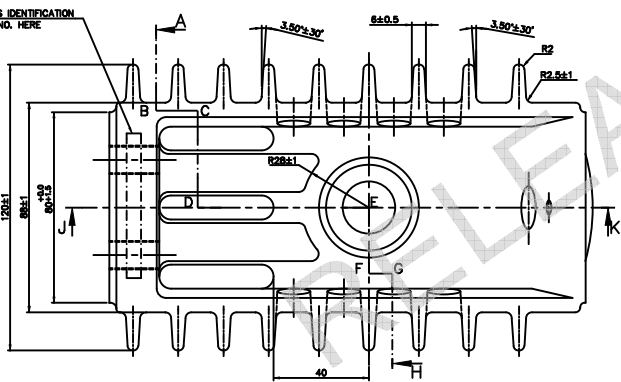


VIEW 'Y'



VIEW-X

INSCRIBE SUPPLIERS IDENTIFICATION AND CASTING LOT NO. HERE



SECTION 'A-A' (AT 90° TURNED)

UNSPECIFIED TOLERANCES FOR CASTING DIM. AA 0230402

NOTE:- 1. SILVER PLATE TO BP 0673613 (0.013 TO 0.015 TH) AT MACHINED FACES MARKED FOR ITEM 003 ONLY. AREA OF SILVER PLATING 98.23 SQ. CM. 2. FOR QUALITY CHECKS & ACCEPTANCE CRITERIA REFER PRODUCT STANDARD SG 12722.

FINISH:- AFTER DEGRASSING APPLY ONE COAT OF BLACK PAINT TO AA 56139 AS PER PAINTING PROCESS BP0674174 (EXCLUDING MACHINED AND PLATED FACES MARKED)

STYLE NO. FOR MACHINING:-

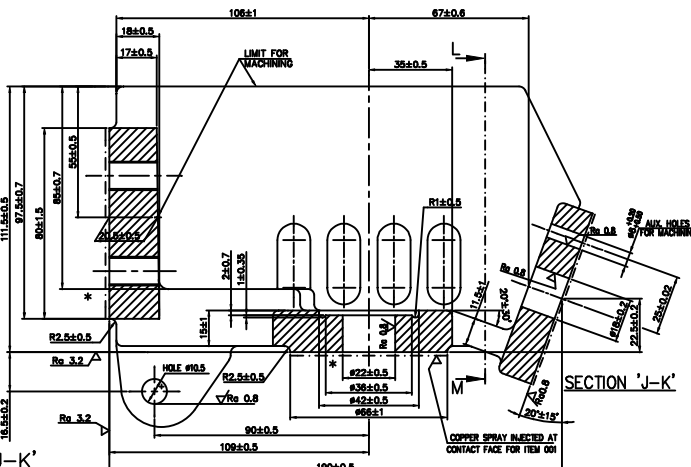
- ITEM 001-BP 9099468610
ITEM 002-BP 9099468628
ITEM 003-BP 9099468636

WEIGHT:- CASTING-2.11 KG. MACHINED-2.10 KG.

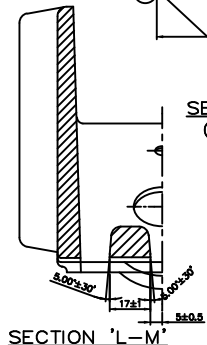
TOOL LIST

- 1498713 - HOLDING FIXTURE FOR H.C.
1498714 - DRILL JIG FOR #10 HOLE
1492786 - 6 EG REAMER
1492787 - 6 EG PLUG GAUGE
PATT. NO. FOR IT. 001 & 002 - 1290397.

ITEM 001,003 & 005



SECTION 'J-K'



SECTION 'L-M'

Table with columns for Item No., Description, Drawing No., and other technical specifications.

Additional information section containing revision history, status of drawing, distribution of prints, and project details.

Revision history table with columns for Rev. No., Date, and Description of changes.

TOP POLE HEAD

1 521 10 01514