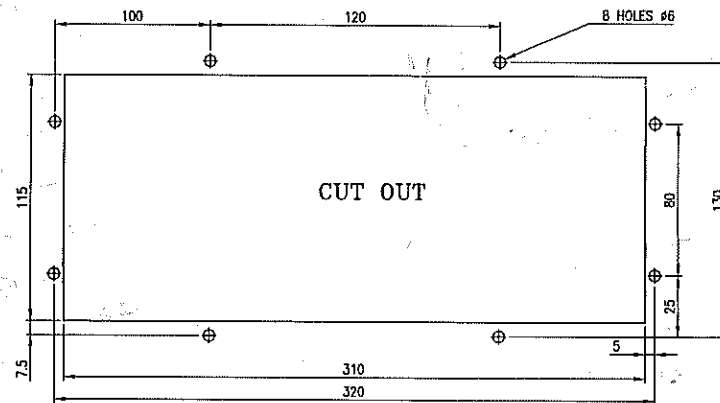
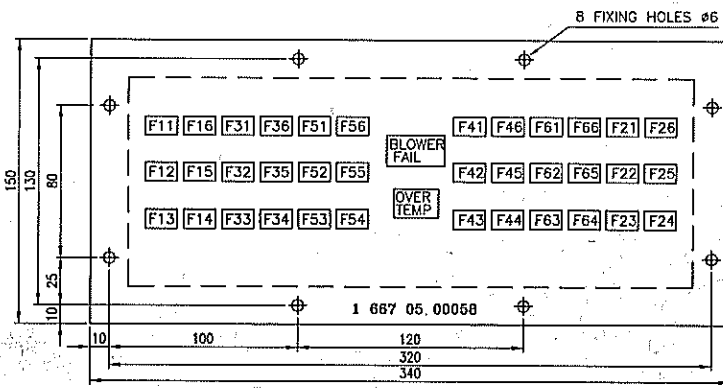
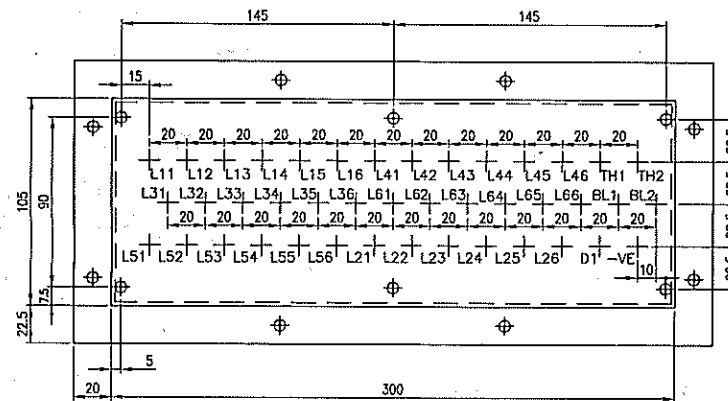
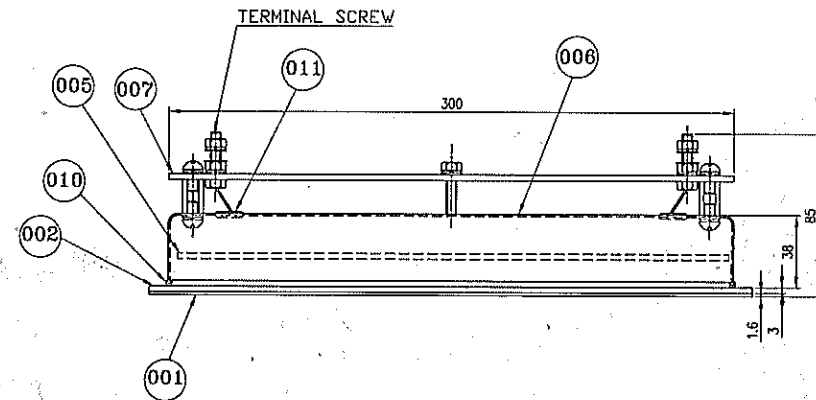


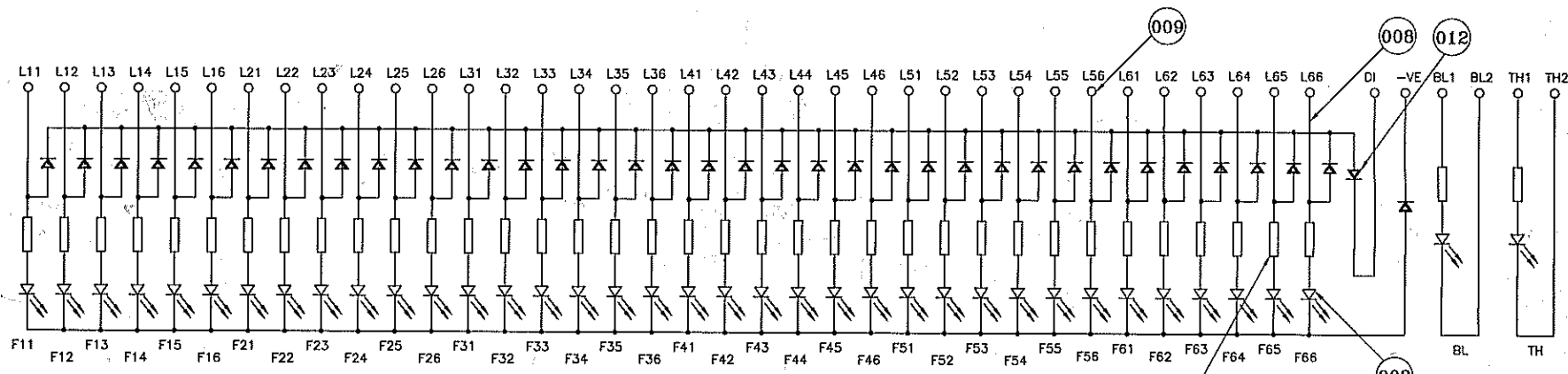
95000 90 200 T ON 01/01/00/00/00/00



CUT OUT DETAILS



REAR VIEW OF PANEL



SCHEMATIC DIAGRAM

NOTE :-

- OPERATING VOLTAGE 48-72 VOLTS DC.
- LETTERING SHALL BE ENGRAVED, SIZE OF LETTERS FOR TITLE SHALL BE OF 6 MM AND FOR OTHER LABELS SHALL BE OF 3 mm HEIGHT.
- TERMINAL BOARD TO BE PROVIDED OUT SIDE THE PERFORATED COVER AND SUITABLE HOLE WITH RUBBER GROMMET FOR OUT GOING WIRES.
- BAR TYPE LED'S TO BE PROVIDED.
- CIRCUIT DIAGRAM TO BE AFFIXED INSIDE THE BACK COVER.
- WIRING TO BE MADE WITH PRINTED CIRCUIT BOARD (PCB).
- PRINTED CABLE MARKER TO BE PROVIDED ON THE TERMINAL BOARD FOR CONNECTION PURPOSE.
- THE L.E.D.ASSY. SHALL CONFORM TO I.E.C. 571 FOR MANUFACTURE & TEST.
- THE L.E.D.ASSY. SHALL BE SUITABLE TO WORK AT AN AMBIENT TEMP. OF 70° C.
- OTHER TESTS :-
 - LED PANEL SHALL BE CONNECTED AT 72 VOLTS AND TESTED FOR 48 HOURS CONTINUOUSLY IN LED GLOWING CONDITION.
 - VOLTAGE THEN WILL BE RAISED TO 100 VOLTS FOR 3 MINUTES.
 - PANEL WILL BE CONNECTED WITH REVERSE POLARITY AT 100 VOLTS FOR ONE HOUR.
 - THERE SHOULD BE NO FAILURE IN ANY COMPONENT. ALL L.E.DS SHOULD GLOW WHEN CONNECTED AGAIN.
- PANEL SHOULD BE MEGGERED WITH ALL TERMINALS SHORTED AND BODY, AND VALUE SHOULD BE MORE THAN 100 M.Ω.
- FLASH TEST SIMILARLY BETWEEN TERMINALS AND BODY SHOULD WITH STAND 2KV. FOR 1 MINUTE.

FINISH:-

ALL HARDWARES AND STEEL ITEMS SHOULD BE ZINC PLATED TO PRS-AA0673603 AND PASSIVATED TO PRS-AA0673604 (0.013 TK.)

STYLE CODE NO.- VAR 00 - BP 9047573676

VAR	REMARKS	VAR NO.	ITEM NO.	DESCRIPTION	DRAWING NO.	VAR.	MATERIAL	UNIT	FINISH	ZONE
			012	DIODE 1N5408						
			011	GROMMET			RUBBER			
			010	RUBBER BEADING			RUBBER			
			009	TERMINAL			STEEL		ZINC PLATED & PASSIVATED	
			008	WIRE 19/0.2 SECTION SILVER PLATED					600VOLTS GRADE PTFE	
			007	TERMINAL BOARD			EPOXY		FIRE RETARDANT	
			006	COVER (PERFORATED)			STEEL		ZINC PLATED & PASSIVATED	
			005	PRINTED CIRCUIT BOARD			EPOXY		FIRE RETARDANT	
			004	RESISTOR						
			003	LED BAR TYPE						
			002	BACKING PANEL			EPOXY		FIRE RETARDANT	
			001	FRONT PANEL			EPOXY		FIRE RETARDANT	

28 - CARD TYPE-3

29 - CARD TYPE-1

30 - CARD TYPE-2

ADDITIONAL INFORMATION
 SELF COOLED RECT
 STATUS OF DRAWING L

DISTRIBUTION OF PRINTS
 OFFICE COPY -1
 RFM -4

COMP. FILE NO. CEET 1067

REV 01 DATE 1-12-02 ALTERED CHECKED APPROVED

NOTE - 5-MODIFIED

INDIAN RAILWAYS
 AC/DC DE LOCO
 NAME OF CUSTOMER/PROJECT

भारत हेवी इलेक्ट्रिकल्स लिमिटेड
 BHARAT HEAVY ELECTRICALS LTD.
 BHOPAL

DRW. NAME K.S.D. DATE 28-9-01
 SHEET NO. 1 OF 1
 SCALE 1:2

INDIAN RAILWAYS
 G/A OF BAR LED
 38 INDICATION PANEL

1 667 05 00058

REV. 01