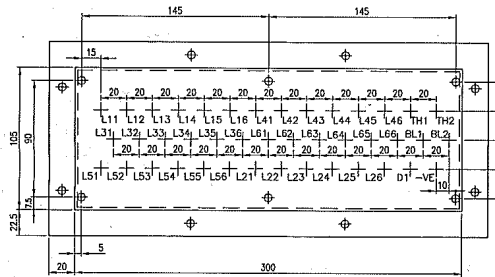
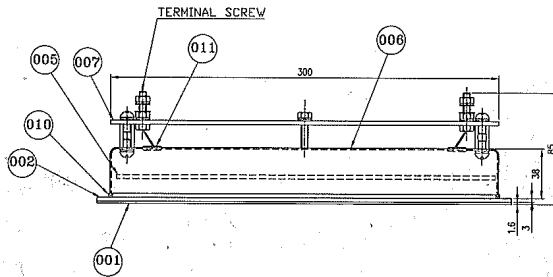
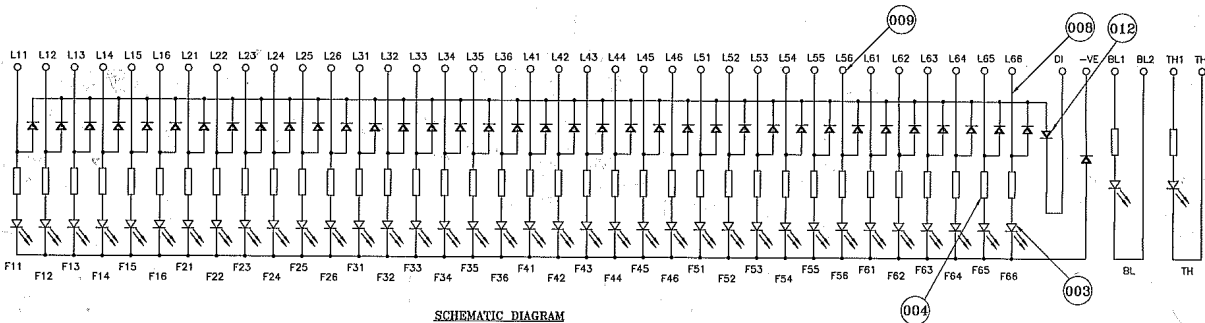


CUT OUT DETAILS



REAR VIEW OF PANEL



SCHEMATIC DIAGRAM

NOTE :-

- OPERATING VOLTAGE 48-72 VOLTS DC.
- LETTERING SHALL BE ENGRAVED, SIZE OF LETTERS FOR TITLE SHALL BE OF 6 MM AND FOR OTHER LABELS SHALL BE OF 3 mm HEIGHT.
- TERMINAL BOARD TO BE PROVIDED OUT SIDE THE PERFORATED COVER AND SUITABLE HOLE WITH RUBBER GROMMET FOR OUT GOING WIRES.
- BAR TYPE LED'S TO BE PROVIDED.
- CIRCUIT DIAGRAM TO BE AFFIXED INSIDE THE BACK COVER.
- WIRING TO BE MADE WITH PRINTED CIRCUIT BOARD (PCB).
- PRINTED CABLE MARKER TO BE PROVIDED ON THE TERMINAL BOARD FOR CONNECTION PURPOSE.
- THE L.E.D.ASSY. SHALL CONFORM TO I.E.C. 571 FOR MANUFACTURE & TEST.
- THE L.E.D.ASSY. SHALL BE SUITABLE TO WORK AT AN AMBIENT TEMP. OF 70° C.
- OTHER TESTS :-
 - LED PANEL SHALL BE CONNECTED AT 72 VOLTS AND TESTED FOR 48 HOURS CONTINUOUSLY IN LED GLOWING CONDITION.
 - VOLTAGE THEN WILL BE RAISED TO 100 VOLTS FOR 3 MINUTES.
 - PANEL WILL BE CONNECTED WITH REVERSE POLARITY AT 100 VOLTS FOR ONE HOUR.
 - THERE SHOULD BE NO FAILURE IN ANY COMPONENT. ALL L.E.DS SHOULD GLOW WHEN CONNECTED AGAIN.
- PANEL SHOULD BE MEGGERED WITH ALL TERMINALS SHORTED AND BODY, AND VALUE SHOULD BE MORE THAN 100 MΩ.
- FLASH TEST SIMILARLY BETWEEN TERMINALS AND BODY SHOULD WITH STAND 2KV. FOR 1 MINUTE.

FINISH:-

ALL HARDWARES AND STEEL ITEMS SHOULD BE ZINC PLATED TO PRS-AA0673603 AND PASSIVATED TO PRS-AA0673604 (0.013 TK.)
 STYLE CODE NO.- VAR 00 - BP 9047573676

NO.	DESCRIPTION	MATERIAL	FINISH
012	DIODE 1N5408		
011	GROMMET	RUBBER	
010	RUBBER BEADING	RUBBER	
009	TERMINAL	STEEL	ZINC PLATED & PASSIVATED
008	WIRE 19/0.2 SECTION SILVER PLATED		600VOLTS GRADE PTFE
007	TERMINAL BOARD	EPOXY	FIRE RETARDANT
006	COVER (PERFORATED)	STEEL	ZINC PLATED & PASSIVATED
005	PRINTED CIRCUIT BOARD	EPOXY	FIRE RETARDANT
004	RESISTOR		
003	LED BAR TYPE		
002	BACKING PANEL	EPOXY	FIRE RETARDANT
001	FRONT PANEL	EPOXY	FIRE RETARDANT

2B - CARD TYPE-3

2B - CARD TYPE-1

2B - CARD TYPE-2

ADDITIONAL INFORMATION
 SELF COOLED RECT.

STATUS OF DRAWING
 L

DISTRIBUTION OF PRINTS
 OFFICE COPY -1
 RFM -4

COMP. FILE NO. CEET 1067

AC/DC DE LOCO INDIAN RAILWAYS

भारत रेली भारतीय रेलवे सिस्टिम
 BHARAT HEAVY ELECTRICALS LTD.
 BHOPAL

REV. DATE ALTERED 8.3.2001
 01 4-12-03 CHECKED
 02 407

SCALE 1:2

CGD6503

G/A OF BAR LED
 38 INDICATION PANEL

1 687 05 00058