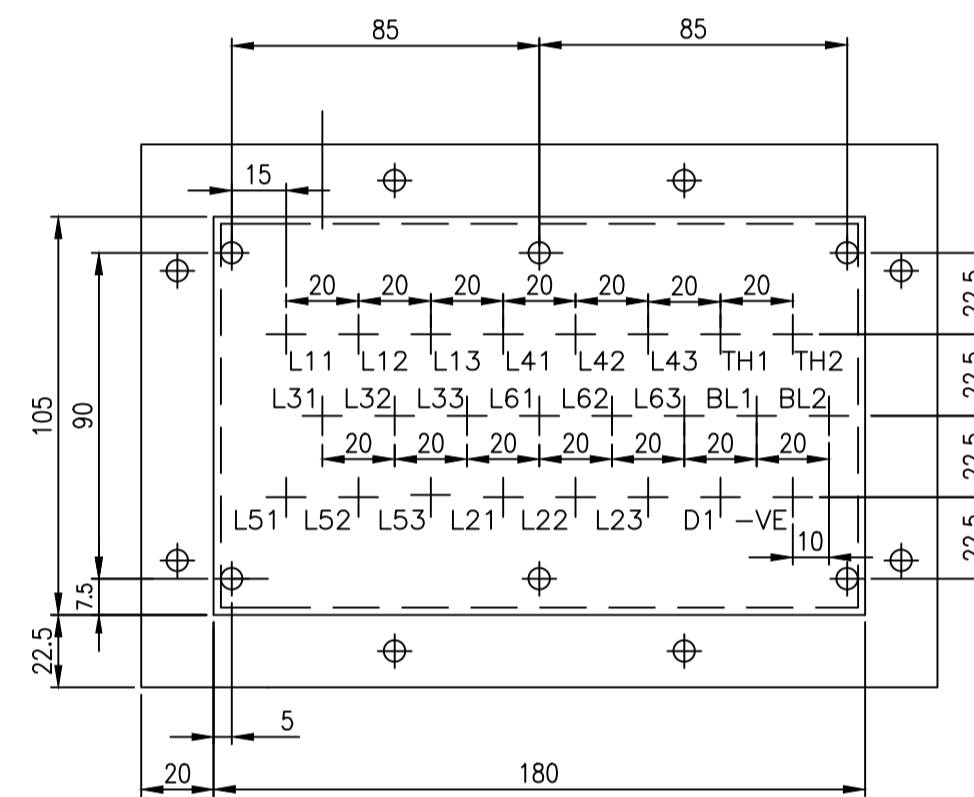
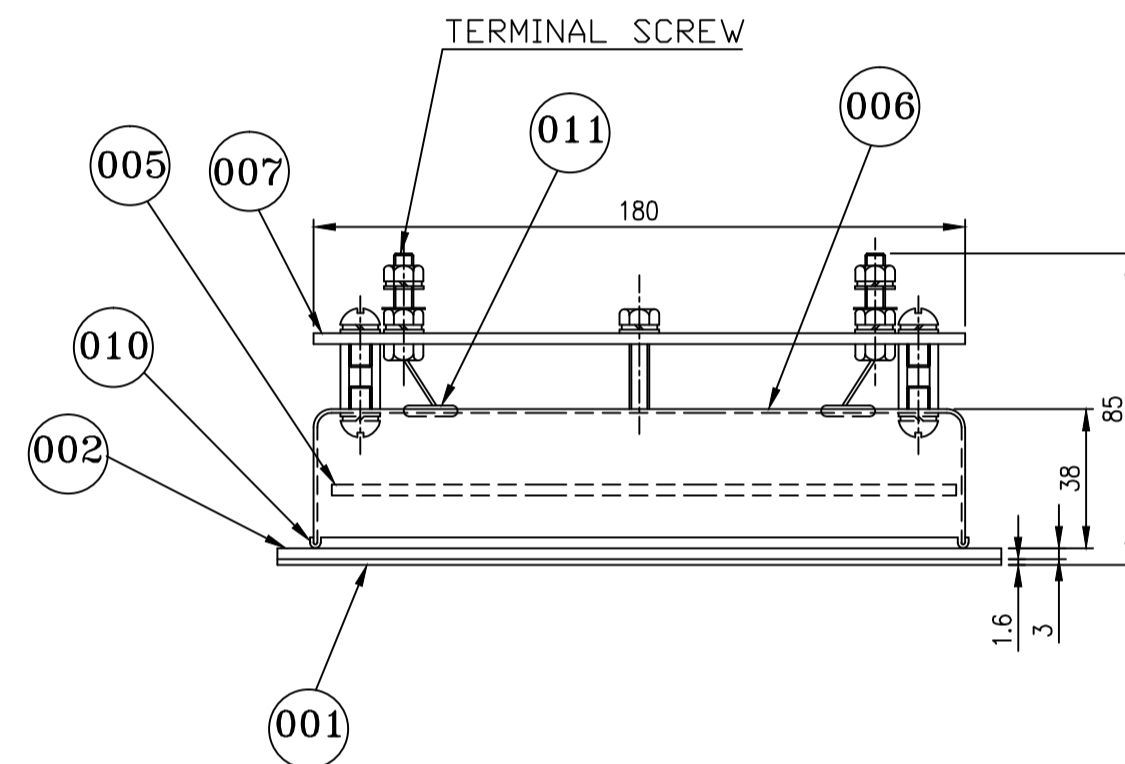
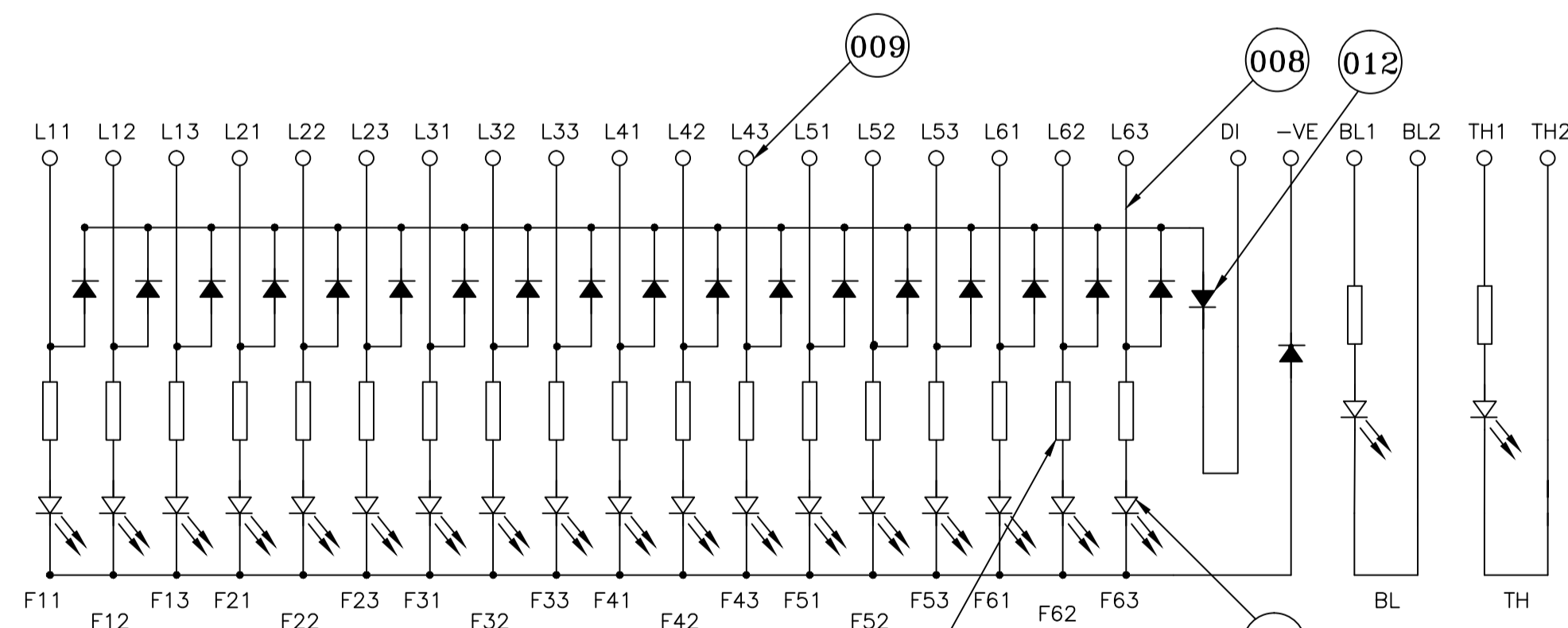


PANEL CUT OUT DETAILS



REAR VIEW OF PANEL



SCHEMATIC DIAGRAM

NOTE :-

- OPERATING VOLTAGE 90-135 VOLTS DC.
- LETTERING SHALL BE ENGRAVED, SIZE OF LETTERS FOR TITLE SHALL BE OF 6 MM AND FOR OTHER LABELS SHALL BE OF 3 mm HEIGHT.
- TERMINAL BOARD TO BE PROVIDED OUT SIDE THE PERFORATED COVER AND SUITABLE HOLE WITH RUBBER GROMMET FOR OUT GOING WIRES.
- BAR TYPE LED'S TO BE PROVIDED.
- CIRCUIT DIAGRAM TO BE PRINTED INSIDE THE BACK COVER.
- WIRING TO BE MADE WITH PRINTED CIRCUIT BOARD (PCB).
- PRINTED CABLE MARKER TO BE PROVIDED ON THE TERMINAL BOARD FOR CONNECTION PURPOSE.
- THE L.E.D.ASSY. SHALL CONFORM TO I.E.C. 571 FOR MANUFACTURE & TEST.
- THE L.E.D.ASSY. SHALL BE SUITABLE TO WORK AT AN AMBIENT TEMP. OF 70° C.

10. OTHER TESTS :-

- LED PANEL SHALL BE CONNECTED AT 120 VOLTS AND TESTED FOR 48 HOURS CONTINUOUSLY IN LED GLOWING CONDITION.
- VOLTAGE THEN WILL BE RAISED TO 135 VOLTS FOR 3 MINUTES.
- PANEL WILL BE CONNECTED WITH REVERSE POLARITY AT 135 VOLTS FOR ONE HOUR.
- THERE SHOULD BE NO FAILURE IN ANY COMPONENT. ALL L.E.D's SHOULD GLOW WHEN CONNECTED AGAIN.
- LED PANEL SHOULD BE MEGGERED WITH ALL TERMINALS SHORTED AND BODY AND VALUE SHOULD BE MORE THAN 100 MΩ.
- FLASH TEST SIMILARLY BETWEEN TERMINALS AND BODY SHOULD WITH STAND 2KV. FOR 1 MINUTE.

FINISH:-

ALL HARDWARES AND STEEL ITEMS SHOULD BE ZINC PLATED TO PRS-AA0673603 AND PASSIVATED TO PRS-AA0673604 (0.013 TK.)

STYLE CODE NO.- BP9048584051

012	DIODE 1N5408				
011	GROMMET		RUBBER		
010	RUBBER BEADING		RUBBER		
009	TERMINAL		STEEL	ZINC PLATED & PASSIVATED	
008	WIRE 19/0.2 SECTION SILVER PLATED			600VOLTS GRADE PTFE	
007	TERMINAL BOARD		EPOXY	FIRE RETARDANT	
006	COVER (PERFORATED)		STEEL	ZINC PLATED & PASSIVATED	
005	PRINTED CIRCUIT BOARD		EPOXY	FIRE RETARDANT	
004	RESISTOR				
003	LED BAR TYPE				
002	BACKING PANEL		EPOXY	FIRE RETARDANT	
001	FRONT PANEL		EPOXY	FIRE RETARDANT	

28 → CARD TYPE-3 28 → CARD TYPE-1 28 → CARD TYPE-2

ADDITIONAL INFORMATION SELF COOLED RECT		INDIAN RAILWAYS 1600 HHP 3-PH DEMU	
STATUS OF DRAWING L		NAME OF CUSTOMER/PROJECT BHARAT HEAVY ELECTRICALS LTD. BHOPAL	
DISTRIBUTION OF PRINTS OFFICE COPY -1 RFM -4		COMP. FILE NO. 16670500102	DATE 23.08.17
REV	DATE	ALTERED	BY
		CHECKED	DEPT. CEE
		APPROVED	CODE 4071
REVISION		SCALE 1:2	WEIGHT (K.G.)
G/A OF BAR LED 20 INDICATION PANEL		DRG. NO. 1 667 05 00102	REV. 00