

10022-10201-2
DRAWING No.

3/2 ALL OVER

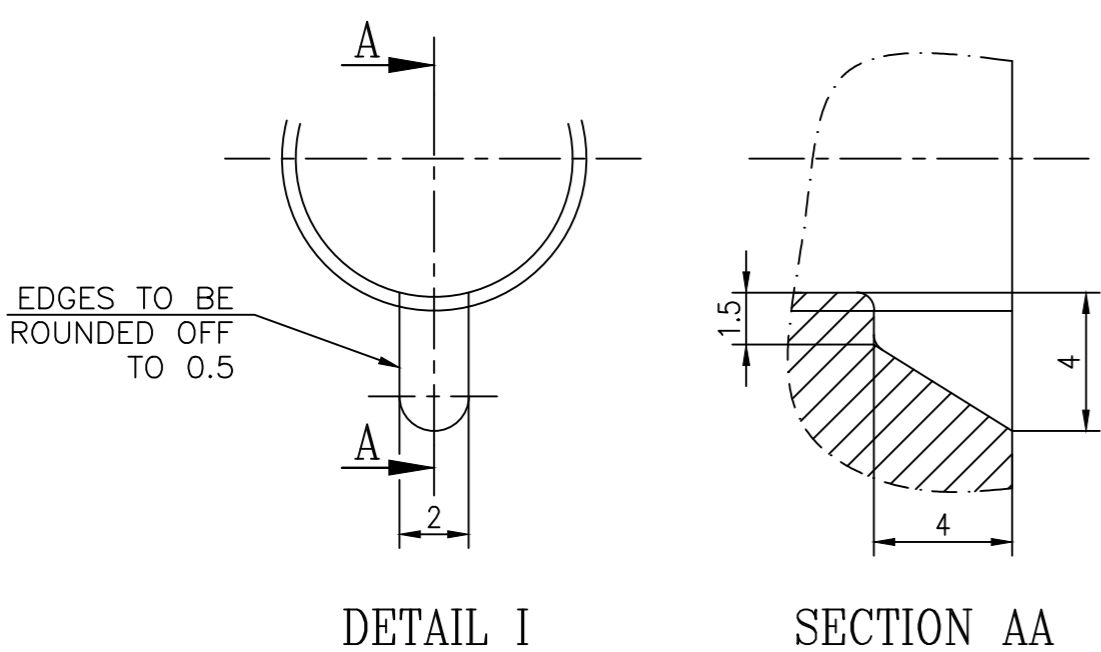
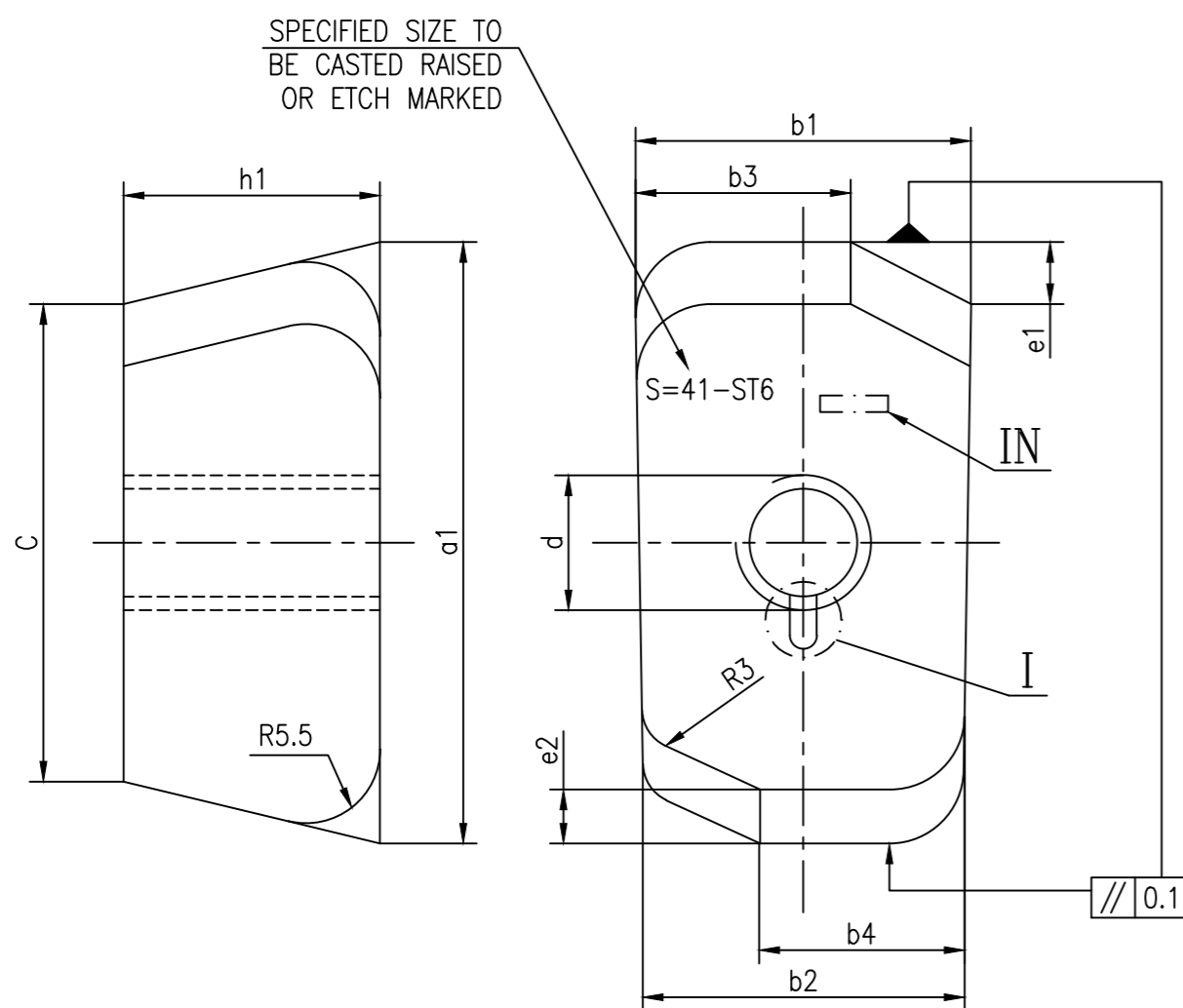


TABLE - 1

VAR	DESCRIPTION	MATERIAL GRADE	MATERIAL CODE	a1 ^{+0.2}	b1	b2	b3 _{-0.2}	b4 _{-0.2}	c ^{+0.2}	d	h1	e1 ^{+0.1}	e2 ^{+0.1}	PROPOSED SCRU SIZE	WT. PER PC-(Kg)
56	BALANCING WEIGHT S=46-WHA	ASTM B777, CL 1	W97310201221												0.264
12	BALANCING WEIGHT S=46-ST6	HW19996	W97310201124	44.6	25	23.6	16.0	15.0	35.4	M10	19	4.6	4.0	M10X21	0.132
11	BALANCING WEIGHT S=46-XCN	HW19585	W97310201116												0.132
55	BALANCING WEIGHT S=41-WHA	ASTM B777, CL 1	W97310201213												0.189
10	BALANCING WEIGHT S=41-ST6	HW19996	W97310201108	39.8	22	20.6	14.0	13.3	33.8	M10	16	3.7	3.2	M10X18	0.092
09	BALANCING WEIGHT S=41-XCN	HW19585	W97310201094												0.092
54	BALANCING WEIGHT S=36-WHA	ASTM B777, CL 1	W97310201205												0.115
08	BALANCING WEIGHT S=36-ST6	HW19996	W97310201086	34.8	18	17.0	11.5	10.5	30.0	M8	13	2.6	2.3	M8X15	0.054
07	BALANCING WEIGHT S=36-XCN	HW19585	W97310201078												0.054
53	BALANCING WEIGHT S=31-WHA	ASTM B777, CL 1	W97310201 191												0.091
06	BALANCING WEIGHT S=31-ST6	HW19996	W97310201060	29.8	18	16.6	11.5	10.5	25.0	M8	13	3.4	2.8	M8X15	0.044
05	BALANCING WEIGHT S=31-XCN	HW19585	W97310201051												0.044
52	BALANCING WEIGHT S=26-WHA	ASTM B777, CL 1	W97310201183												0.048
04	BALANCING WEIGHT S=26-ST6	HW19996	W97310201043	25.2	15	13.8	9.5	8.9	21.2	M8	10	2.7	2.2	M8X12	0.024
03	BALANCING WEIGHT S=26-XCN	HW19585	W97310201035												0.024
51	BALANCING WEIGHT S=21-WHA	ASTM B777, CL 1	W97310201175												0.034
02	BALANCING WEIGHT S=21-ST6	HW19996	W97310201027	20.2	15	13.8	9.5	8.9	16.2	M8	10	4.2	3.3	M8X12	0.017
01	BALANCING WEIGHT S=21-XCN	HW19585	W97310201019												0.017

MATERIAL GRADES : HW19585 - X6CrNi189
 : HW19996 - STELLITE-6
 : ASTM B777, CLASS-1

TECHNICAL REQUIREMENTS :

- ALL UNSPECIFIED RADII ARE OF SIZE R0.6.
- MATERIAL AND DIMENSIONS FOR DIFFERENT SIZES OF BALANCING WEIGHTS IS TO BE TAKEN FROM TABLE-1.
- IDENTIFICATION ACCORDING TO HW0400397 AT THE PLACE MARKED WITH IN.

NOTE : THREADS ARE TO BE MADE BY SUPPLIER.

SUPERSEDES OLD DRG. UNDER SAME NUMBER.

KUN 666.25
ST16001
Ref. Drawing No.
Sign & Date
Inventory No.

REV	DATE	ALTERED CHECKED	REV	DATE	ALTERED CHECKED	REV	DATE	ALTERED CHECKED	REV	DATE	ALTERED CHECKED
02	08.12.06	AKS SD/- CHECKED A.S SD/-									

GMS No./ CBOM No. 0-10201-27000		STATUS OF DRG		TYPE OF PRODUCT STEAM TURBINE OR NAME OF CUSTOMER/PROJECT			
GRADE OF UNTOL. DIM M/CG.- AA0230208 m		WELDING-CLASS 'B' OF AA0621104		Welding Symbol		Bharat Heavy Electricals Ltd. RANIPUR, HARDWAR	
GAS CUTTING-TABLE 3 OF AA0621101		SUPERSEDES OLD DRAWING UNDER SAME NUMBER. DRG. SUBMITTED ON SERVER. C/A NO. STE-03-F1110		DEPT STE CODE 4011		SCALE NTS WEIGHT (KG) SEE TABLE 1	
REF. TO ASSY. DRG.		ITEM No.		DRAWING NO. 2-10201-27001		CARD CODE	
SHEET No. 1		No. OF SHEETS 1		SHEET No. 1		No. OF SHEETS 1	