

THE INFORMATION ON THIS DOCUMENT IS THE PROPERTY OF BHARAT HEAVY ELECTRICALS LIMITED. IT MUST NOT BE USED DIRECTLY OR INDIRECTLY IN ANY WAY DETRIMENTAL TO THE INTEREST OF THE COMPANY.

21750540357

REF.	DESCRIPTION	QTY.	MATERIAL
d	SHLL PIPE	1	ASTM-A-106, GR. B (CARBON STEEL)
b	DISHED ENDS	2	ASTM-A-285, GR. C (CARBON STEEL)
c	FLANGE (WELTED PART)	1	AISI-307 (STAINLESS STEEL)
d	SWITCH BODY (NON WELTED PART)	1	AISI-307 (STAINLESS STEEL)
e	FLATE ASSEMBLY (EXCLUDING FLOAT)	1	AISI-307 (STAINLESS STEEL)
f	FLATE	1	AISI-316 (STAINLESS STEEL)

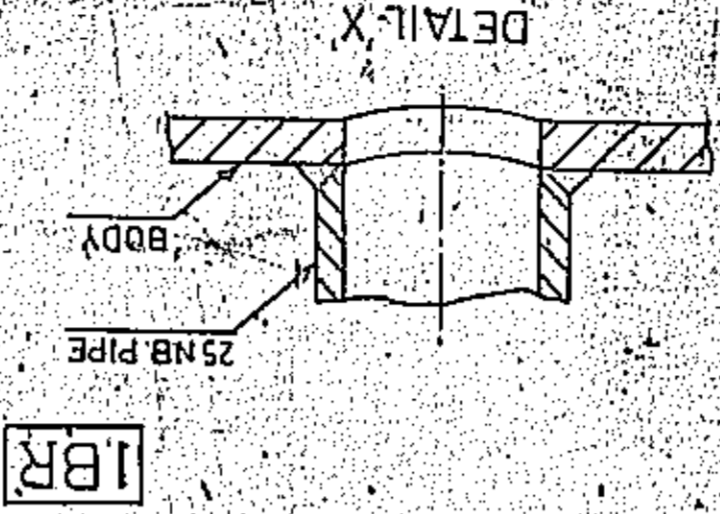
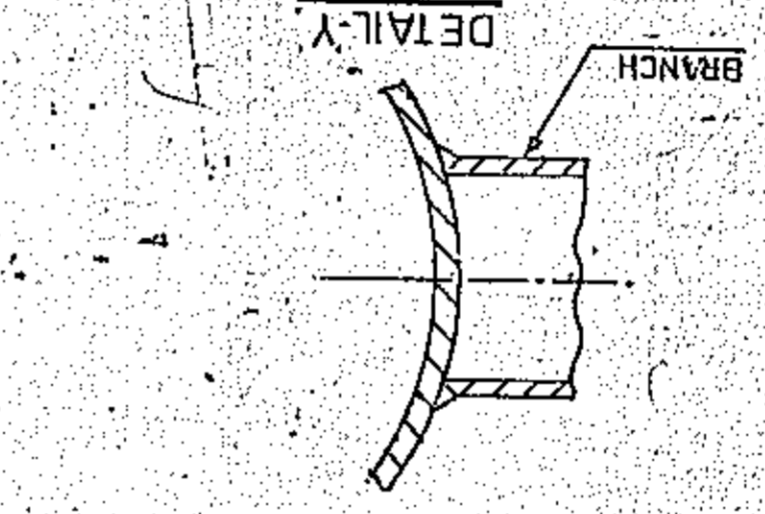
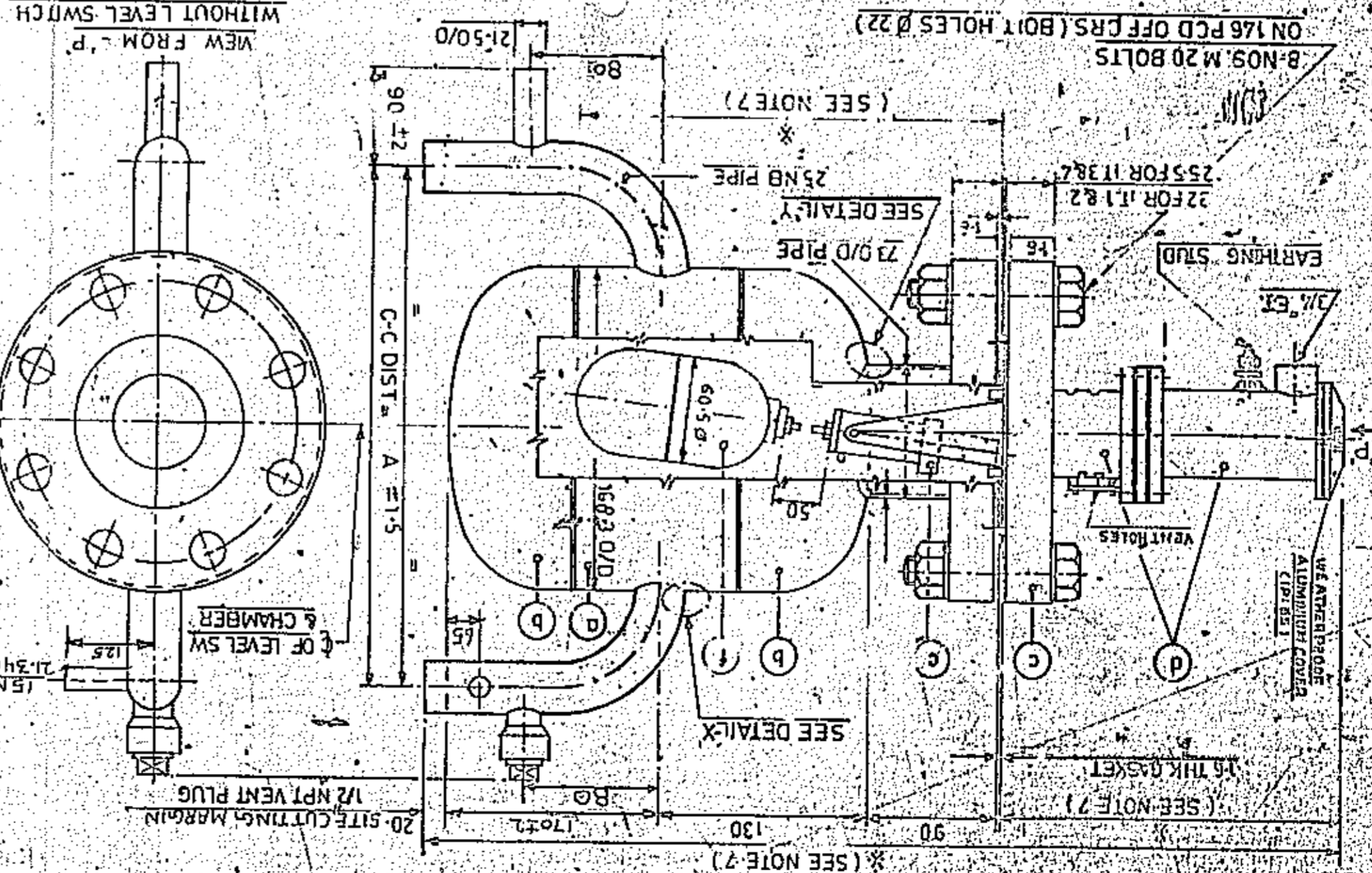
ITEM NO.	DIM A.	PRESSURE	TEMP.	DESIGN	HYDROSTATIC TEST	REMARKS
1	350	50.0 kg/cm <sup>2</sup>	300°C		75 kg/cm <sup>2</sup>	

**NOTES-**

- MAGNETIC LEVEL FLOAT SWITCH WITH SINGLE POLE DOUBLE THROW ACTION SUITABLE FOR MAKING CONTACT BOTH ON RAISING AND LOWERING LEVEL.
- CURRENT RATING: 5A AT 240 V. AC.
- DIFFERENTIAL BETWEEN MAKE AND BREAK OF SWITCH IS  $\pm 2$  (FIXED).
- EACH LEVEL SWITCH SHOULD BE TESTED AT 2KV FOR ONE (1) MINUTE.
- EACH LEVEL SWITCH SHOULD BE PROVIDED WITH 2-MICRO SWITCHES.
- CHAMBER.
- WELD SEAMS IN THE FLOAT TO BE 100% RADIOGRAPHED AND CRACK DETECTION TESTED.
- COMPLETE SWITCH WITH FLOAT IN POSITION TO BE HYDROSTATICALLY TESTED FOR 30 MINUTES MIN.
- FLOAT TO BE REMOVED AFTER TEST AND INSPECTED FOR LEAKAGE OF WATER INSIDE THE FLOAT.
- 100% DYE PENETRATION TEST OF WELD JOINTS OF FLOATS TO BE CARRIED OUT AFTER HYDROSTATIC TEST.
- ENDS OF PIPES TO BE PROPERLY PROTECTED WITH PLASTIC CAPS.
- INSPECTION-
- DIRECTOR OF BOILERS.
- LEVEL SWITCH AND CHAMBER TO BE SUPPLIED WITH CERTIFICATE IN I.B.R. FORM III C.
- RADIOGRAPHIC REPORT TO BE PROVIDED FOR BUTT WELDS OF FLOATS.
- SUPPLIER TO INDICATE THE DIMENSIONS MARKED X THUS.
- SUPPLIER TO INDICATE NET WEIGHT AND VOLUME OF FLOAT IN OFFER AND SAME TO BE MARKED ON EACH FLOAT.

VAR. NO.	REMARKS	VAR. ITEM	DESCRIPTION	STANDARD	DRAWING NO.	MATL. CODE	UNIT	QTY.
20								
21								
22								

<b>ADDITIONAL INFORMATION</b> TYPE OF PRODUCT OR NAME OF CUSTOMER / PROJECT H.P. HEATERS		<b>STATUS OF DRAWING</b> DISTRIBUTION OF PRINTS HCM-7	
<b>DATE</b> 15/01/82		<b>DATE</b> 15/01/82	
<b>DESIGNER</b> S. SARKAR		<b>DESIGNER</b> S. SARKAR	
<b>CHECKED BY</b> S. SARKAR		<b>CHECKED BY</b> S. SARKAR	
<b>SCALE</b> N.T.S.		<b>SCALE</b> N.T.S.	
<b>UNIT</b> M.M.		<b>UNIT</b> M.M.	
<b>CLASSIFICATION</b> INTERNAL		<b>CLASSIFICATION</b> INTERNAL	
<b>PROJECT NO.</b> 21750540357		<b>PROJECT NO.</b> 21750540357	



VIEW FROM - P (WITHOUT COVER)  
 WHEN LIQUID LEVEL FALLS TERMINALS T.C MAKE AND H.C BREAK  
 CONTACT TYPE: 2 NOS. SPDT (2 NO. + 2 NC) MICRO SWITCH  
 CURRENT RATING: 5A AT 240 V. AC

