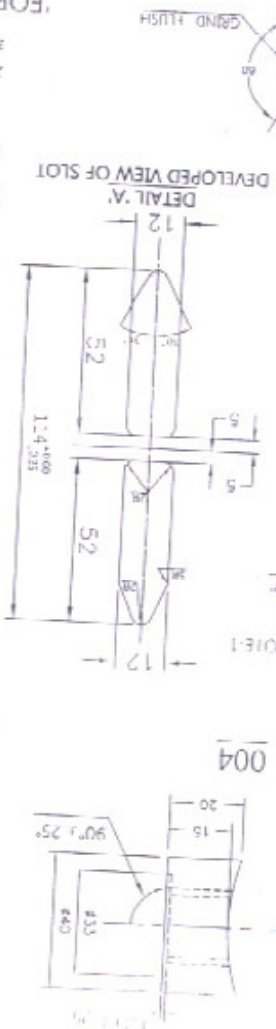
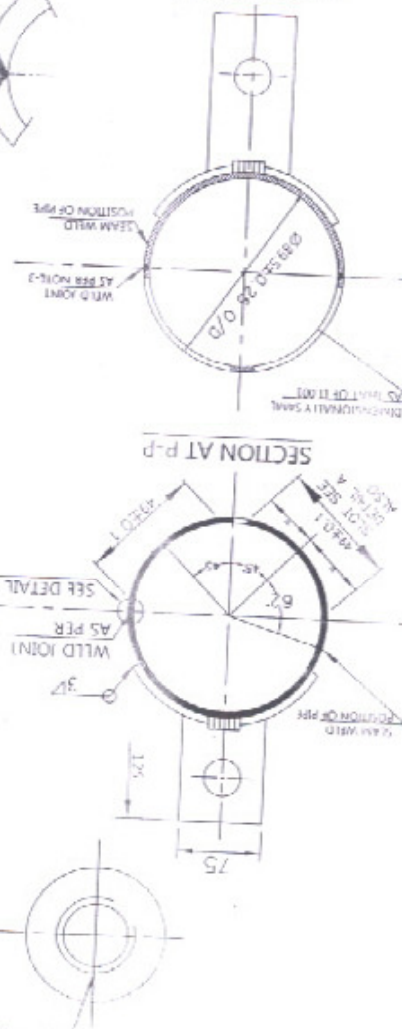
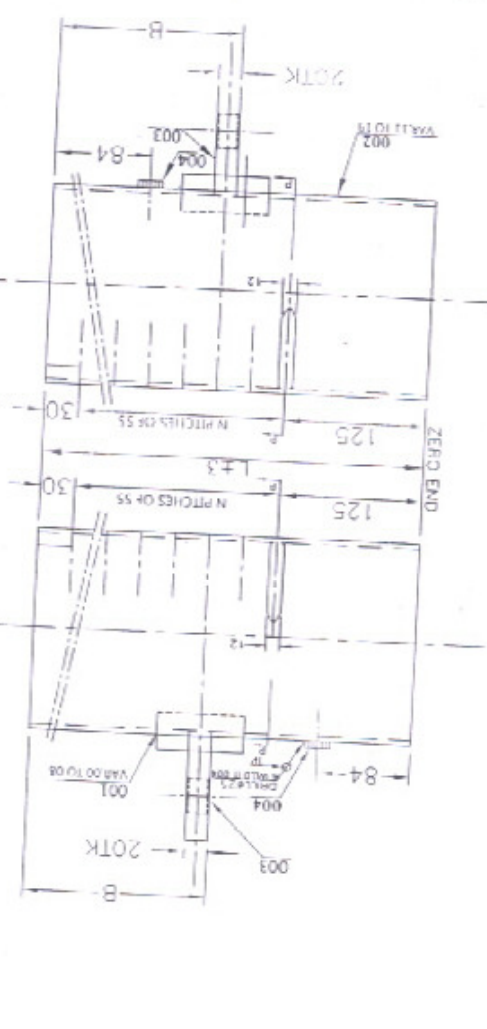


THE INFORMATION ON THIS DOCUMENT IS THE PROPERTY OF BHARAT HEAVY ELECTRICALS LIMITED  
 IT MUST NOT BE USED DIRECTLY OR INDIRECTLY IN ANY WAY DEPRECIATIONAL TO THE INTEREST OF THE COMPANY

REV	DATE	DESCRIPTION	BY	CHKD	APPD
06	07/12/2012	DRG 1 SET FOR BOM #212			
05	03/11/2012	CHECKED			
04	12/02/2008	APPROVED			

REV	DATE	DESCRIPTION	BY	CHKD	APPD
03	25/02/2000	APPROVED			
02	12/10/99	APPROVED			

REV	DATE	DESCRIPTION	BY	CHKD	APPD
01	12/10/99	APPROVED			



- ALTERNATIVELY HEADER ITEMS 001 & 002 CAN BE MADE FROM B31K SHEET MATERIAL A42013 IN TWO HALVES TO 89H1 DIA AS SHOWN BY SECTION P-P DENIMING ROUING ALLOWANCES ARE TO BE ADDED BY SHOP
- SIMILAR TOLERANCE ON FITCH (H) & LENGTH (L) IS APPLICABLE ON VAR. 11 TO 19
- ALL WELDED JOINTS SHALL BE X-RAY TESTED

FOR BOM REFER DELINK BOM NO.24994300029

NOTE TO SHOP

VAR NO	ITEM NO	ITEM	QTY	UNIT	PRICE	TOTAL
00	17	760	335	11	5.86	650.10
01	14	810	390	14	6.50	870.00
02	16	980	965	15	1.6	24.00
03	18	1090	500	17	8.79	149.43
04	20	1200	555	19	2.0	38.00
05	22	1310	610	21	2.2	46.20
06	24	1420	665	23	2.4	55.20
07	26	1530	720	25	2.6	65.00
08	28	1640	775	27	2.8	75.60
09	30	1750	830	29	3.0	87.00
10	32	1860	885	31	3.2	99.20
11	34	1970	940	33	3.4	112.20
12	36	2080	995	35	3.6	126.00
13	38	2190	1050	37	3.8	140.40
14	40	2300	1105	39	4.0	156.00
15	42	2410	1160	41	4.2	172.20
16	44	2520	1215	43	4.4	189.60
17	46	2630	1270	45	4.6	207.00
18	48	2740	1325	47	4.8	225.60
19	50	2850	1380	49	5.0	245.00

TO TOLERANCE OF ±0.5 ON PROGRESSIVE DIM. OF SLOTS

VAR NO	ITEM NO	ITEM	QTY	UNIT	PRICE	TOTAL
00	17	760	335	11	5.86	650.10
01	14	810	390	14	6.50	870.00
02	16	980	965	15	1.6	24.00
03	18	1090	500	17	8.79	149.43
04	20	1200	555	19	2.0	38.00
05	22	1310	610	21	2.2	46.20
06	24	1420	665	23	2.4	55.20
07	26	1530	720	25	2.6	65.00
08	28	1640	775	27	2.8	75.60
09	30	1750	830	29	3.0	87.00
10	32	1860	885	31	3.2	99.20
11	34	1970	940	33	3.4	112.20
12	36	2080	995	35	3.6	126.00
13	38	2190	1050	37	3.8	140.40
14	40	2300	1105	39	4.0	156.00
15	42	2410	1160	41	4.2	172.20
16	44	2520	1215	43	4.4	189.60
17	46	2630	1270	45	4.6	207.00
18	48	2740	1325	47	4.8	225.60
19	50	2850	1380	49	5.0	245.00