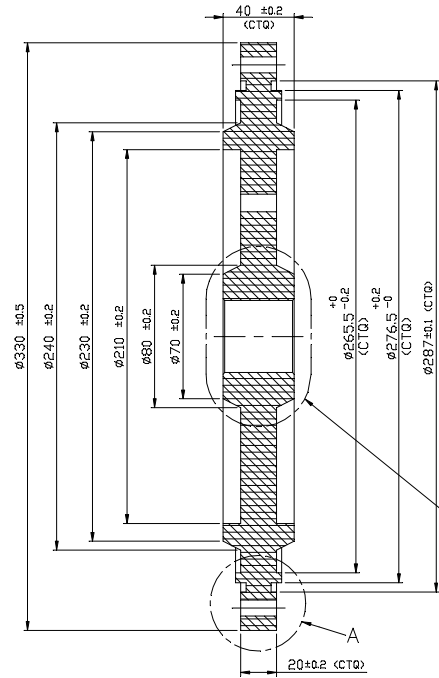


FIRST ANGLE PROJECTION

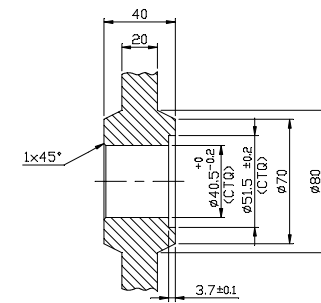
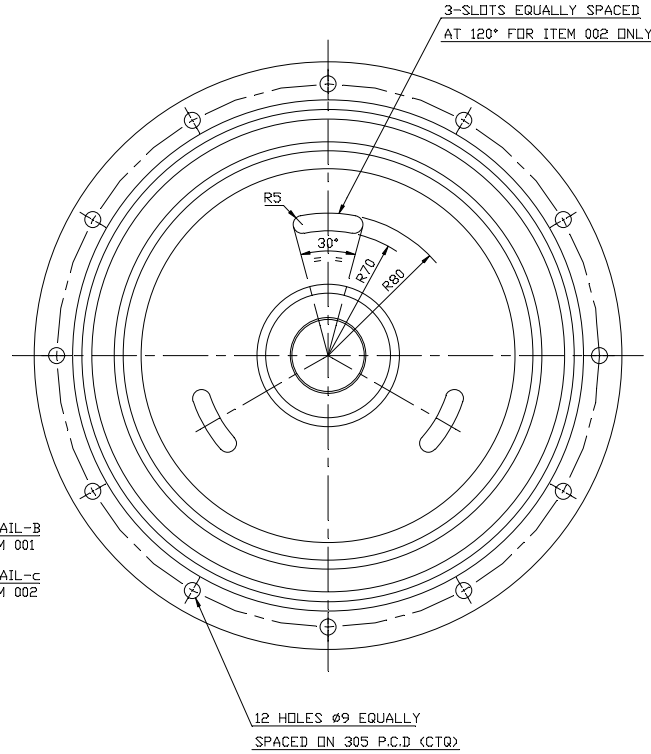
ALL DIMENSIONS ARE IN mm

DWG. NO. 25171000504

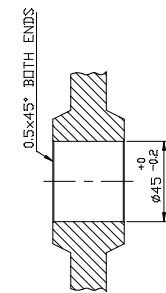


SEE DETAIL-B FOR ITEM 001 & SEE DETAIL-C FOR ITEM 002

001 002



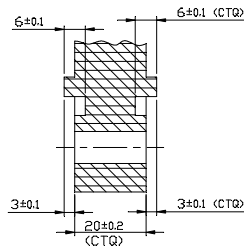
DETAIL-B FOR ITEM 001



DETAIL-C FOR ITEM 002

NOTE :-

- INSULATOR SHOULD BE TYPE TESTED FOR ONE MINUTE POWER FREQUENCY WITH STAND VOLTAGE OF 75 KV WITH H.V. APPLIED TO A PIN OF Ø39.5 HAVING A HEAD OF Ø60 PLACED IN Ø40 HOLE AND EARTH CONNECTED TO M8 SCREW FIXED ON Ø9 HOLE AT 305 P.C.D. COMPLETE ASSEMBLY TO BE KEPT INSIDE INSULATING MEDIA TO AVOID EXTERNAL FLASHOVER DURING TESTING.
- INSULATOR SHOULD BE TYPE AND ROUTINE TESTED FOR PARTIAL DISCHARGE TEST AT 21 KV. THE P.D. LEVEL SHOULD BE LESS THAN 10 P.C.
- ITEM SHOULD BE THOROUGHLY DEGREASED, CLEANED AND DRIED BEFORE SEALING IN POLYTHENE PACK.



DETAIL-A

ST933015	002	NYLON MOULDINGS TYPE-6	BP22961	KG	2.250	001
ST933014	001	NYLON MOULDINGS TYPE-6	BP22961	KG	2.275	001

ADDITIONAL INFORMATION

STATUS OF DRAWING B

DISTRIBUTION OF PRINTS  
O.C - 1  
SWM - 3  
TCX - 1

उत्पाद का प्रकार या ग्राहक/परियोजना का नाम  
TYPE OF PRODUCT OR NAME OF CUSTOMER/PROJECT

GVM-36



भारत हेवी इलेक्ट्रिकल्स लिमिटेड  
भोपाल  
BHARAT HEAVY ELECTRICALS LTD.  
BHOPAL

नाम/NAME	हस्ता/ SIGN.	दिनांक/DATE	वृत्त/NO.
G.PRASAD	Sd/-	06.01.94	संख्या
P.S.SONKAR	Sd/-	22.03.94	NO. OF
D.K.DIKSHIT	Sd/-	04.05.94	VAR.

भाग/DEPT:SWE  
उप-भाग/UNTIL: DIMS. GR.  
कोड/CDR:409

जुड़ाव/SCALE: 1:2

मूल वजन/WEIGHT(KG):  
उप-वजन/REF. TO ASSY. DRG.:  
05171000501

शीट/NO. OF SHEET: 013

वृत्त/NO. OF DRAWING NO.: 25171000504

वृत्त/NO. OF SHEET: 06

BARRIER

413015 (0)

REF. DRG. NO.

SIGN AND DATE

INVENTORY NO.

THE INFORMATION ON THIS DOCUMENT IS THE PROPERTY OF BHARAT HEAVY ELECTRICALS LIMITED. IT MUST NOT BE USED DIRECTLY OR INDIRECTLY IN ANY WAY DETRIMENTAL TO THE INTEREST OF THE COMPANY.