

FIRST ANGLE PROJECTION

(ALL DIMENSIONS ARE IN mm)

DRG. NO. 3 4526200208 102 103 104 105 106 107

THE INFORMATION ON THIS DOCUMENT IS THE PROPERTY OF BHARAT HEAVY ELECTRICALS LTD. IT MUST NOT BE USED DIRECTLY OR INDIRECTLY IN ANY WAY DETRIMENTAL TO THE INTEREST OF THE COMPANY.

SHEET NO.	DESCRIPTION	REVISION			
01	CONTENTS & TITLE BLOCK	00	01	02	
02	GEN. ARRANGMENT OF COOLER CONTROL CABINET	00	01	02	
03	BOM FOR GEN. ARRANGEMENT OF COOLER CONTROL CABINET	00	00	02	

A
B
C
D

SIGN. DATE REF. DRG. NO.

INVENTORY NO.

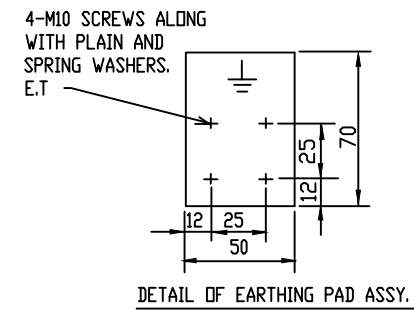
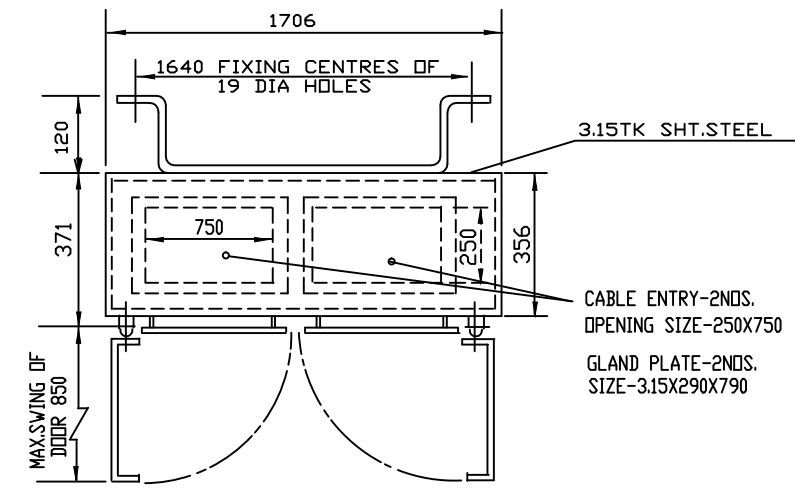
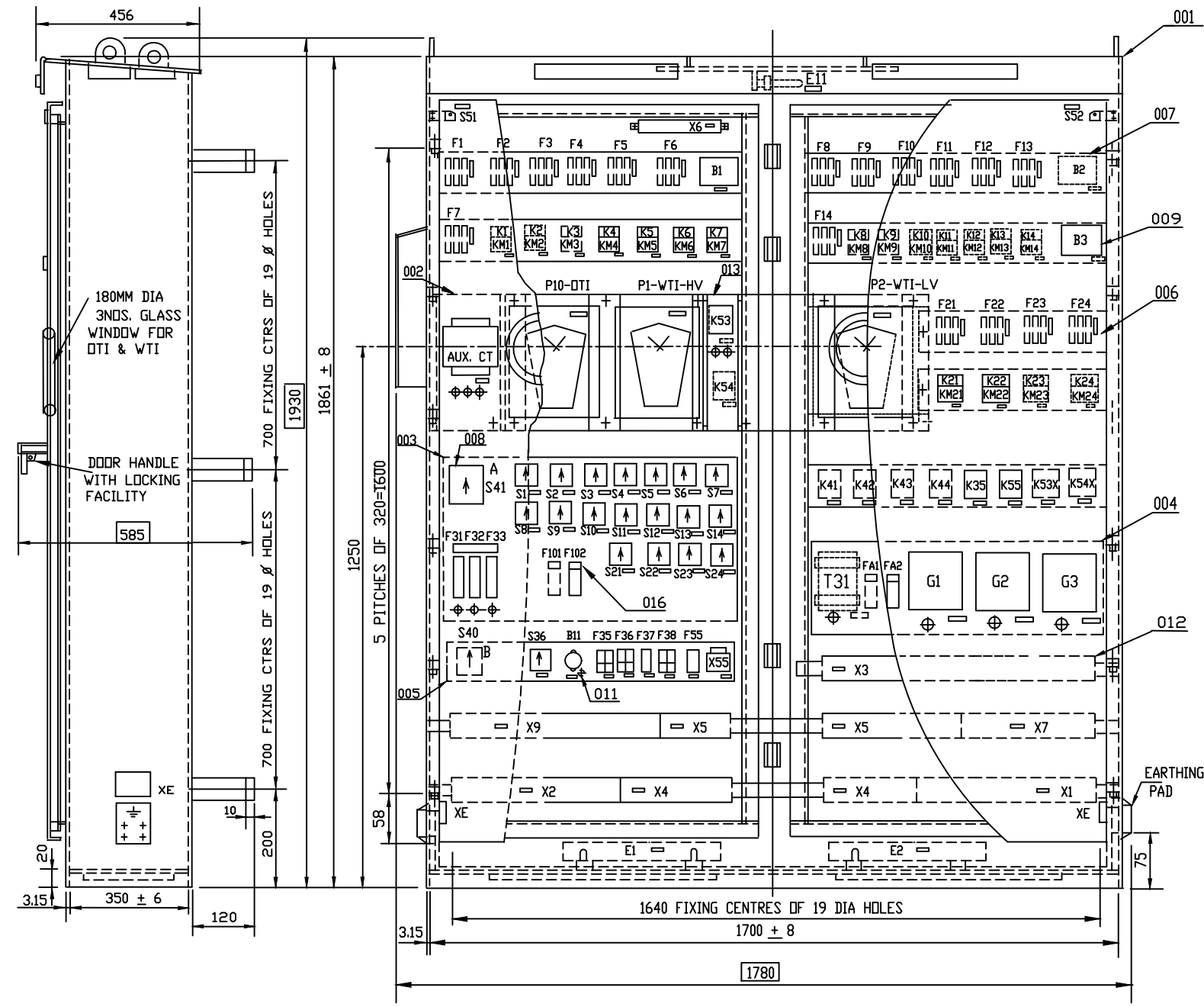
REV	DATE	ALT	Rev	REV	DATE	ALT	SD/-	NO. OF TRANSFORMER	4	ADDITIONAL INFORMATION	CONTRACT DOC. NO. BP-DG-330-301-015			NAME	SIGN	DATE		
02	06.02.12	CKD	<i>[Signature]</i>	01	17.11.11	CKD	SD/-	PROJECT	1X600 MW KAKATIYA TPS ST-II.	W.D. 68109-A-512-01	<i>[Signature]</i>	BHARAT HEAVY ELECTRICALS LTD. BHOPAL	DRN.	RAJIV	-sd-	23.08.11		
		APPD	<i>[Signature]</i>			APPD	SD/-	LQA NO.	TM 0816/CPP/711/KTPP-II/D.O. 507/2008 DT. 13.10.2008	STATUS OF DRAWING 'PR'	DEPT	CODE	WEIGHT(kg)	SCALE	CHD.	RK PATEL	-sd-	09.09.11
REVISED AS PER CUSTOMER LET. REF: D-0298/VC-20/HYD/815. Dtd. 28.12.2011		REVISION EFFECTED ON SHT. 02 & 03.		DRG. REVISED AS PER CUSTOMER REF: D-0298/VC-20/HYD/598, DTD. 15.10.11		REV. EFFECTS ON SHT. NOS. 02		TYPE OF PRODUCT	240 MVA, 21/400//3 KV, 1PH, ONAN/ONAF/OF AF GEN. TRANSF.	DISTRIBUTION OF PRINTS	TRE	406	-	NTS	APPD.	SK/URS	-sd-	14.09.11
								NAME OF CUSTOMER	M/S. ANDHRA PRADESH POWER GENERATION CORPORATION LTD.	TRE-1,TRM-3,TRX-1	TITLE GEN. ARRANGEMENT OF COOLER CONTROL CABINET			DRG. NO.	3 4526200208		REV.	02
														SHEET	01	OF	03	

FIRST ANGLE PROJECTION

(ALL DIMENSIONS ARE IN mm)

DRG. NO. 34526200208

THE INFORMATION ON THIS DOCUMENT IS THE PROPERTY OF BHARAT HEAVY ELECTRICALS LIMITED. IT MUST NOT BE USED DIRECTLY OR INDIRECTLY IN ANY WAY DETRIMENTAL TO THE INTEREST OF THE COMPANY.



REV	DATE	ALTERED	BY
02	06.02.12	CHECKED	<i>Rajiv</i>

REV	DATE	ALTERED	SD/-
01	17.11.11	CHECKED	SD/-

DRN	NAME	SIGN	DATE
CHD	RAJIV.	-sd-	23.08.11
APPD	RK PATEL	-sd-	09.09.11
	SK/URS	-sd-	14.09.11



BHARAT HEAVY ELECTRICALS LTD.
BHOPAL

CARD CODE

AT CKT 203-C LINK (LKD) DELETED.

CFL WAS FLUORESCENT TUBE

DISTRIBUTION OF PRINT

DEPT. CODE

TITLE
GEN. ARRANGEMENT OF COOLER CONTROL CABINET

NO. OF SHEETS	03
SHEETS NO.	02

TRE TRM TRX

TRE TRM TRX

TRE TRM TRX

TRE TRM TRX

W.O. 68109-A-512-01

DRG. NO. 34526200208

1

2

3

4

5

6

7

8

9

10

11

12

FIRST ANGLE PROJECTION

(ALL DIMENSIONS ARE IN mm)

DRG. NO. 34526200208

302

303

304

305

306

307


308

KEY TO DESIGNATION PLATE							
REF	INSCRIPTION						QTY
	A1	A2	B1	B2	B3	B4	
A	COOLER CONTROL SELECTOR (S41)	-	OFF	LOCAL MANUAL	AUTO	REMOTE MANUAL	1
B	BANK SELECTOR (S40)	-	BANK-A	BANK-B	BANK-A	BANK-B	1
REF.	INSCRIPTION	0	1	2	3	QTY	
S1, S2, S3, S4, S5, S6, S7, S8, S9, S10, S11, S12, S13, S14,	FAN CONTROL S1/-----S14	OFF	SERVICE	STANDBY	TEST	14	
S21, S22, S23, S24	PUMP CONTROL S21/-----S24	OFF	SERVICE	STANDBY	TEST	4	
S36	HEATER CONTROL(S36)		AUTO	OFF	MANUAL	1	

NOTES-

- FOR GENERAL INSTRUCTIONS & NOTES TO SHOPS REFER DRG. TR100791(SH.1 TO 5).
- COOLER CONTROL CABINET IS TO FINISH :
 - (a) EXTERIOR - LIGHT GREY TO SHADE 631 OF IS:5
 - (b) INTERIOR - FULL GLOSSY WHITE.
- THE CABINET SEALING SYSTEM SHALL BE SUITABLE FOR DEGREE OF PROTECTION IP:55 TO IS:13947 (PART-I).
- DOOR RUBBER GASKET SEALING SHALL BE DONE WITH CHLOROPRENE RUBBER 10MM THICK X 30MM WIDE.
- FOR IDENTIFICATION OF ITEMS REFER DIAGRAM OF COOLER CONTROL GEAR DRG.NO. 34526200207 (SHT.01 TO 18).
- THE SHEET STEEL USED SHALL BE 3.15 mm THICK .
- WEIGHT OF COOLER CONTROL CABINET - 450 KG.
- ALL DIMENSIONS SHOWN THUS ARE FOR OVERALL SHIPPING DIMENSIONS.
- PAINT THICKNESS SHALL BE MINIMUM 80 MICRONS.

004		016	FUSE LABEL	24996200007				
001		015	SET OF DEVICES AS PER COOLER SCHEMATIC	34526200207 (SH-1T18)				
AS REQD.		014	WIRING MATERIAL	24996200006				
001		013	CONTACTOR PANEL	3.15TK. X 80 X 300	AA1011713136 AA10113		0.7	
-	AS PER DRG. 34526200207	012	TERMINAL BLOCK ASSY.	24996200037	24			
001		011	RUBBER GROMMET Ø12.5X 3TYPE-2		SC 777 02 01			
010		010	RUBBER GROMMET Ø19X 3TYPE-2		SC 777 02 01			
111		009	LABELS FOR DEVICES	34996200121				
002	ANODISED ALUMINIUM	008	DESIGNATION PLATES	34996200111				
005		007	PANEL	3.15TK. X 110 X 830	AA1011713136 AA10113		2.2	
002		006	PANEL	3.15TK. X 110 X 450	AA1011713136 AA10113		1.2	
001	HINGED	005	PANEL	3.15TK. X 110 X 720	AA1011713136 AA10113		2.2	
001		004	PSU & AUX. TRFR. PANEL	3.15TK. X 180 X 830	AA1011713136 AA10113		2.1	
001	HINGED	003	SWITCH & FUSE PANEL	3.15TK. X 300 X 720	AA1011713136 AA10113		5.34	
001		002	AUX. CT. PANEL	3.15TK. X 300 X 180	AA1011713136 AA10113		1.2	
001		001	COMPLETE HOUSING	14996200313	00		290	
VAR00	REMARKS	VAR	IT. NO.	DESCRIPTION	DRAWING NO.	IT. NO.	MATL. CODE	A UNIT
						VAR	MATL. SPEC.	C
								UNIT WT. QTY.

REV	DATE	ALTERED CHECKED	REV	DATE	ALTERED CHECKED	DRN	NAME	SIGN	DATE		BHARAT HEAVY ELECTRICALS LTD. BHOPAL	CARD CODE
			02	06.02.01		CHD	RK PATEL	SD/-	23.08.11			
						APPD	SK/URS	SD/-	09.09.11			
									14.09.11			
NOTE 9 ADDED						DISTRIBUTION OF PRINT			DEPT.	CODE	TITLE	
						TRE	TRM	TRX	TRE	406	BOM FOR GEN. ARRGT OF COOLER CONTROL CABINET	
						1	3	1			W.O. 68109-A-512-01 DRG. NO. 34526200208	03 03 REV.02

THE INFORMATION ON THIS DOCUMENT IS THE PROPERTY OF BHARAT HEAVY ELECTRICALS LIMITED. IT MUST NOT BE USED DIRECTLY OR INDIRECTLY IN ANY WAY DETRIMENTAL TO THE INTEREST OF THE COMPANY.

INVENTORY NO. SIGNATURE REF. DRG. NO.