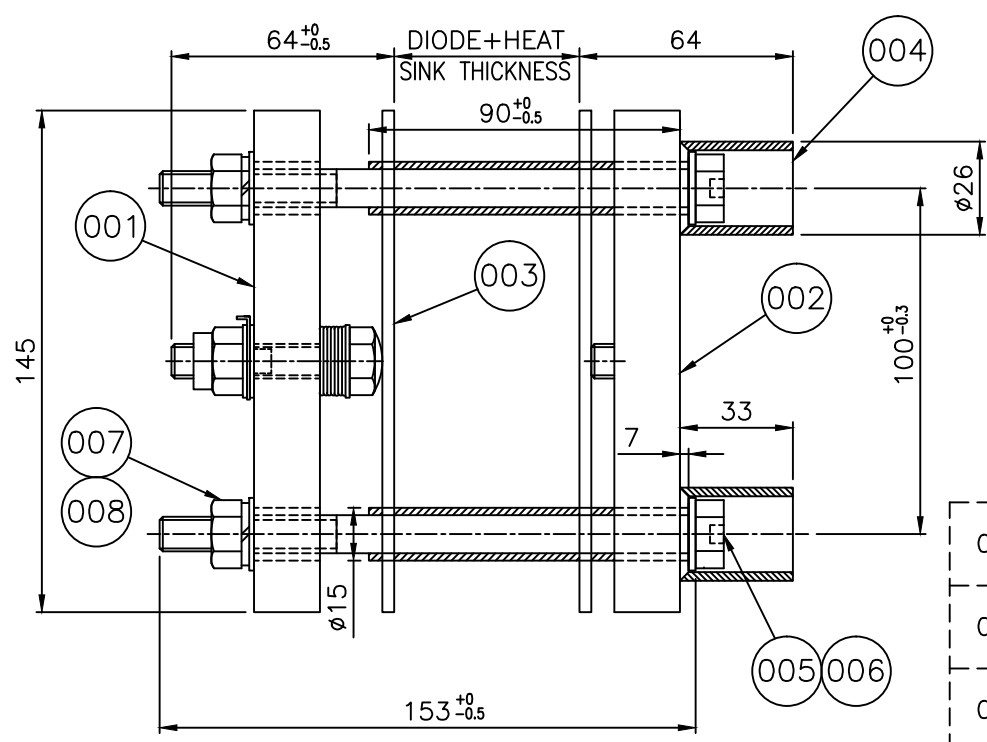


FIRST ANGLE PROJECTION

(ALL DIMENSIONS ARE IN mm.)

DRAWING NO. 3 667 05 00150

THE INFORMATION ON THIS DOCUMENT IS THE PROPERTY OF BHARAT HEAVY ELECTRICALS LIMITED. IT MUST NOT BE USED DIRECTLY OR INDIRECTLY IN ANY WAY DETRIMENTAL TO THE INTEREST OF THE COMPANY.



STYLE LIST				
STYLE NO.	IT. INCLUDED	DESCRIPTION	RECORDED	
			SIGN	DATE
BP 9087567812	VAR.00	CLAMPING ARRANGEMENT	-	04.4.96

FINISH:-

- IT.005-008 TO BE ZINC PLATED & PASSIVATED TO PR.SP AA 0673603 & AA 0673604 RESP'Y (0.013TK).

NOTE:-

- MODIFY LENGTH OF BOLT (IT. 005) FROM 155 TO 153.
- ALTERNATIVELY M10X160-8.8, STANDARD SOCKET HEAD CAP SCREW TO 'BN2 OF BOSSARD' OR EQUIVALENT, MACHINED DOWN TO 153 LENGTH IS ALSO ACCEPTABLE.

002		008	WASHER SPG SC A10-ST		AA 7164001065							
					AA 7164001							
002		007	NUT HEX AM10-8		AA 7151115032							
					AA 7151115							
002		006	WASHER MCD 10.5-ST		AA 7161001064							
					AA 7161001							
002	SEE NOTE-1&2	005	BOLT SOCKET HEAD M10x155						0.100			
					AA 7123123							
002		004	INSULATION TUBE	4 667 05 00133	001				0.020			
002		003	SUPPORT PLATE.	4 667 05 00132	001				0.170			
001		002	BLOCK ASSEMBLY.	3 667 05 00146	00				0.540			
001		001	CLAMPING ASSY.	3 667 05 00145	00				0.600			
VAR. 00	REMARKS	VAR NO.	ITEM NO.	DESCRIPTION	STD.	DRAWING NO.	IT. NO.	MATL. CODE.	A/C	UNIT	UNIT WT.	CS.
							VAR	MATL. SPCN.			QTY.	

R / /

ADDITIONAL INFORMATION				उत्पाद का प्रकार या ग्राहक / परियोजना का नाम										
-				S.T.D										
STATUS OF DRAWING				TYPE OF PRODUCT OR NAME OF CUSTOMER/PROJECT										
M				INDIAN RAILWAYS										
DISTRIBUTION OF PRINTS				वि.सं.ई.सं. भारत हेवी इलेक्ट्रिकल्स लिमिटेड भोपाल BHARAT HEAVY ELECTRICALS LTD. BHOPAL										
OFFICE COPY - 1				बनाया DRN. नाम /NAME हस्ता /SIGN. दि. /DATE वेरि की संख्या NO. OF VAR. आर.सी.बी. -हस्ता.- 04.04.96										
RFM - 4				जांचा CKD. पी.एम.डी. -हस्ता.- 06.04.96										
TCX(RFM) - 1				स्वीकृत APPD. एम.के.जी. -हस्ता.- 11.04.96 00										
REV	DATE	ALTERED	बो.सी. -हस्ता.-	REV	DATE	ALTERED	एम.पी. -हस्ता.-	विभाग DEPT. CEE	अनु.टोल.नाप की श्रेणी UNTOL. DIMS. GR.	अनुपात SCALE	भार कि ग्रा WEIGHT (K.G.)	अस. ड्राइंग का संदर्भ REF. TO ASSY.	मद संख्या ITEM NO.	मद संख्या NO. OF ITEM
03	20.09.14	CHECKED	वि.जॉन	02	22.01.09	CHECKED	आर.सी.बी. -हस्ता.-	कोड CODE. 407	REF CG 06503	1:2	1.550	2 667 06 00171	003	008
		APPROVED	ए.देवागन			APPROVED	ए.सी.जे. -हस्ता.-	शीर्षक/TITLE				मद संख्या		
								CLAMPING ARRANGEMENT OF DIODE & HEAT SINK (JL 01 FOR 15 KN)				पुन./REV. 03		
								शीट क्र. /SHT.NO 01				शीटों की सं./NO.OF.SHT. 01		

INVENTORY No.	REV	DATE	ALTERED	बो.सी.	REVISION	DATE	ALTERED	आर.सी.बी.	हस्ता.-
	03	20.09.14	CHECKED	वि.जॉन	02	22.01.09	CHECKED	आर.सी.बी.	-हस्ता.-
			APPROVED	ए.देवागन			APPROVED	ए.सी.जे.	-हस्ता.-

NOTE-1&2 ADDED.
ITEM 008 ADDED.

DRG. COMPUTERISED & ITEM 005 BOLT M10 X 155 LG.WAS M10x162 LG.

IT.007 ADDED.
DIM.162 WAS 150 FOR IT.005. DIMS. 7,33,64 & 64+0.5 WERE 4,30, 61 & 63+0.5 RESP'Y.
MATL SPEC. OF IT 005 WAS AA 71223. F055