

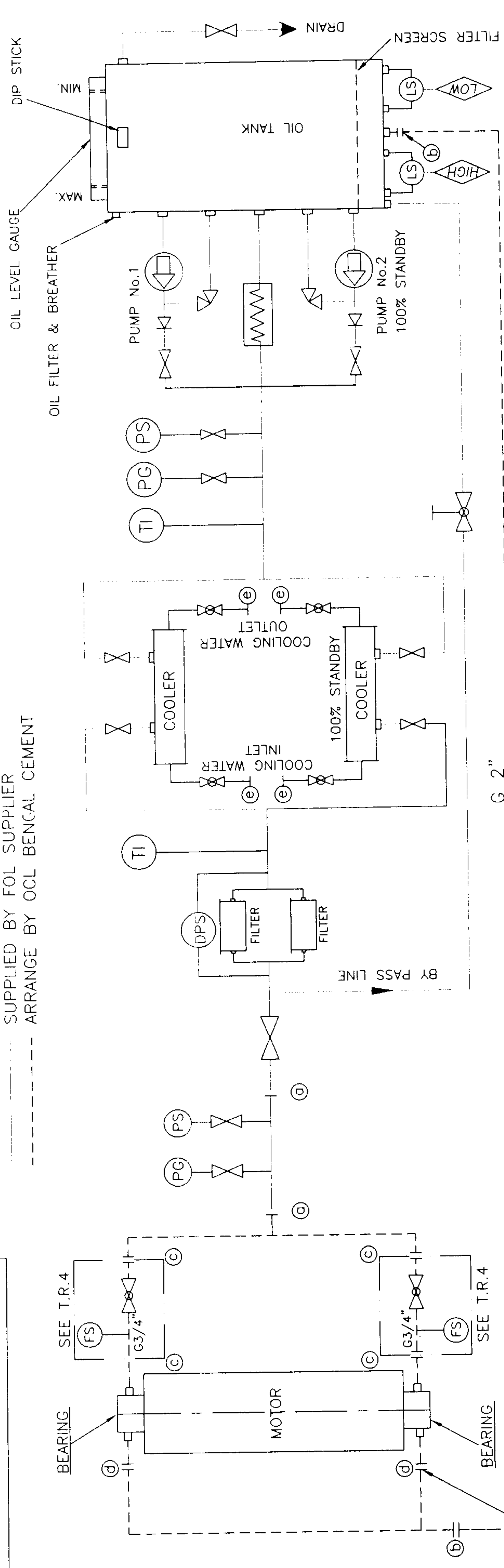
ALL DIMENSIONS ARE IN mm

90-11-22124

SCOPE OF SUPPLY

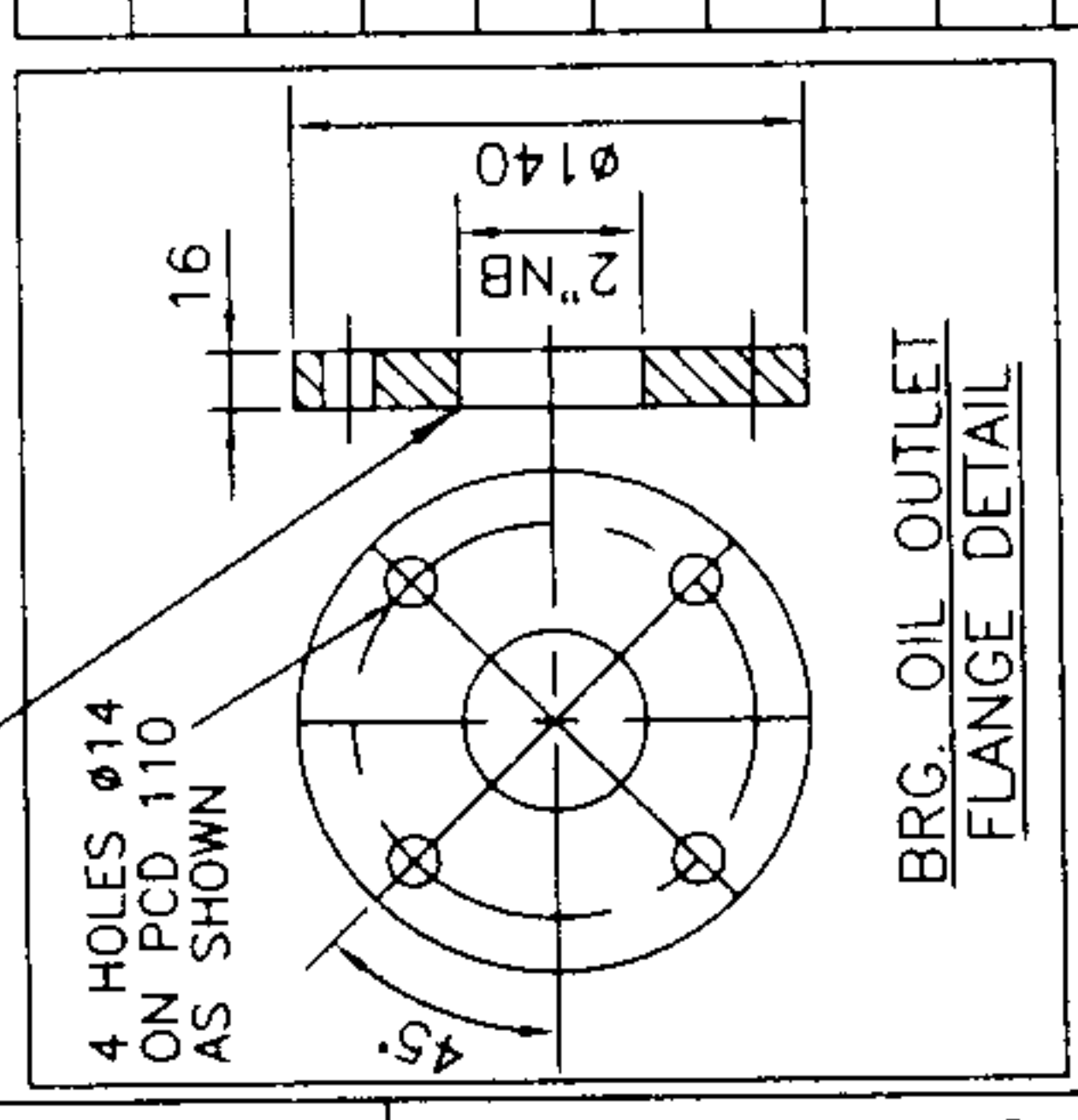
SUPPLIED BY FOL SUPPLIER  
ARRANGE BY OCL BENGAL CEMENT

THE INFORMATION ON THIS DOCUMENT IS THE PROPERTY OF BHARAT HEAVY ELECTRICALS LIMITED. IT MUST NOT BE USED DIRECTLY OR INDIRECTLY IN ANY WAY DETRIMENTAL TO THE INTEREST OF THE COMPANY.



G 2"

OIL OUTLET FLANGE



| LEGEND  |  |
|---|--|
| 1. GATE VALVE                                 |  |
| 2. LOCKABLE TYPE REGULATING GLOBE VALVE       |  |
| 3. NON RETURN VALVE                           |  |
| 4. LEVEL SWITCH                               |  |
| 5. PRESSURE GAUGE WITH SHUT OFF VALVE         |  |
| 6. PRESSURE SWITCH WITH VISUAL INDICATOR      |  |
| 7. TEMPERATURE INDICATOR                      |  |
| 8. RELIEF VALE                                |  |
| 9. PRESSURE RELIEF VALVE                      |  |
| 10. DIFFERENTIAL PRESSURE SWITCH OR INDICATOR |  |
| 11. BY PASS FLOW CONTROL VALVE                |  |
| 12. FLOW SWITCH WITH CONTACT                  |  |

TECH. REQUIREMENTS:-

1. BEARING INLET SIZE = G 3/4" THREADED CONNECTION
2. BEARING OUTLET SIZE = G 2" FLANGED CONNECTION
3. ALL FLANGES MARKED (a) - (e) EXCEPT 2 EACH OF (c) & (d) SHOWN ASSEMBLED ON BEARING ARE TO BE SUPPLIED MATING FLANGES FOR COOLING WATER PIPING AS (e) ARE ALSO TO BE SUPPLIED IN LOOSE CONDITION.
4. THE PIPING FLANGES & INSTRUMENTS SHOWN WITHIN THE CHAIN DOTTED REGION ARE TO BE SUPPLIED IN LOOSE CONDITION.
5. OIL RETURN FROM BEARING OUTLET TO FOLS UNIT IS BY GRAVITY. FOLS UNIT SHOULD BE LOCATED AT LOWER LEVEL SUCH THAT OIL RETURN PIPE HAS AT A CONTINUOUS GRADIENT OF 1 IN 30.

|   |
|---|
| OIL INLET TEMP. = 40°C                          |
| OIL QUANTITY = 7 LPM AT INLET OF EACH BEARING   |
| OIL PRESSURE = 0.2-0.5 BAR AT BEARING OIL INLET |
| OIL GRADE = ISO VG 46                           |

|                                   |  |                              |  |                        |  |
|-----------------------------------|--|------------------------------|--|------------------------|--|
| REF. DRG. NO.                     |  | SIGN. & DATE                 |  | INVENTOR NO.           |  |
| DRG. UPDATED.                     |  | O1 13.05.13                  |  | 01                     |  |
| REV. DATE                         |  | APPROVED                     |  | APPROVED               |  |
| DISTRIBUTION OF PRINTS            |  | AMC - 1                      |  | PLM - 3                |  |
| AMC - 1                           |  | PLM - 3                      |  | TEX (PLM) - 1          |  |
| STATUS OF DRAWING                 |  | W.O. 42122A425-11            |  | ADDITIONAL INFORMATION |  |
| OR                                |  | 1RQ1903-6,                   |  | DRIVE-CEMENT MILL      |  |
| NAME OF CUSTOMER/PROJECT          |  | M/S. OCL BENGAL CEMENT WORKS |  | TYPE OF PRODUCT        |  |
| CEMENT GRINDING UNIT AT MEDINIPUR |  | BHOPAL                       |  | DRN UPENDRA            |  |
| BHARAT HEAVY ELECTRICALS LTD.     |  | BHOPL                        |  | CKD RPB                |  |
| DEPT. AME                         |  | SCALE NTS                    |  | APPD DKD               |  |
| CODE 404                          |  | UNTO DIMS. GR.               |  | REF. TO ASSY. DRG.     |  |
| WEIGHT (K.G.)                     |  | ITEM NO.                     |  | NO. OF ITEMS           |  |
| TITL                              |  | DRAWING NO.                  |  | REV.                   |  |
| SCHEMATIC DIAGRAM OF              |  | 42122-11-06                  |  | 01                     |  |
| FORCED OIL SYSTEM (15 LFM)        |  | SHEET NO. 1                  |  | NO. OF SHEETS 1        |  |

RPB/42122-11-06