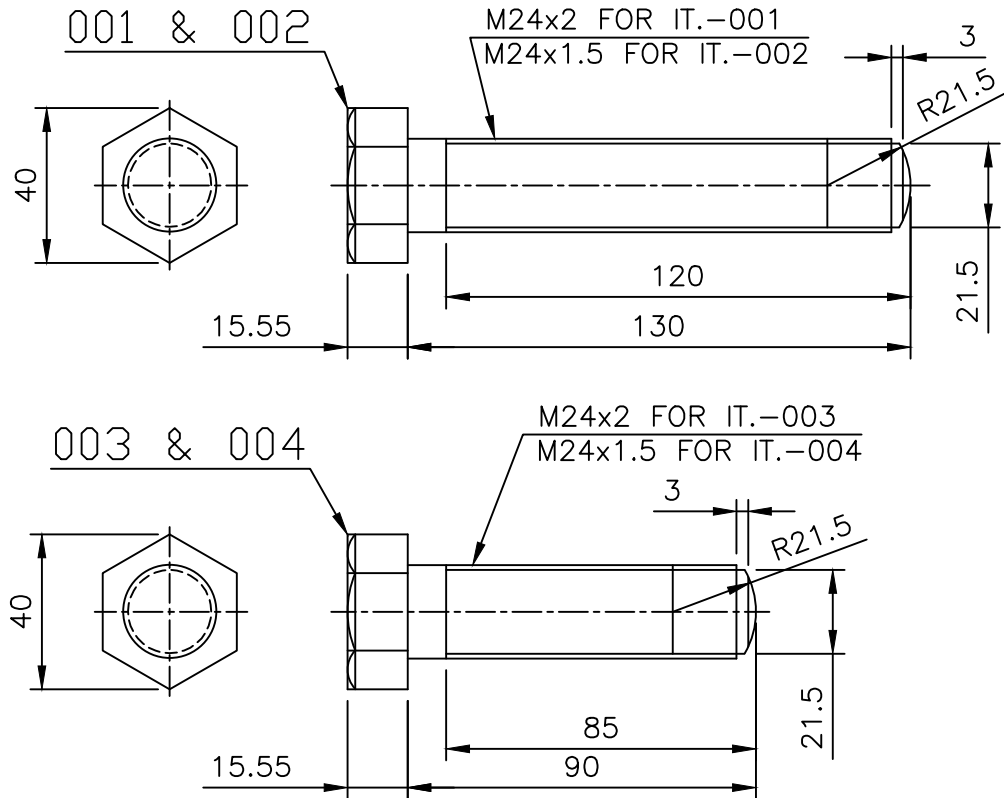


|      |      |          |      |      |          |                        |
|------|------|----------|------|------|----------|------------------------|
| REV. | DATE | ALTERED  | REV. | DATE | ALTERED  | ADDITIONAL INFORMATION |
|      |      | CHECKED  |      |      | CHECKED  |                        |
|      |      | APPROVED |      |      | APPROVED |                        |
|      |      |          |      |      |          | STATUS OF DRAWING      |
|      |      |          |      |      |          | DISTRIBUTION OF PRINTS |

O/C-1,TCX-1,  
RFM-4



NOTES:-

- ITEMS 001 & 004 SHOULD BE TREATED BY PHOSPHATING & PARKERISING TO pr. 7609
- OLD DRAWING REFERENCE IS - 44406503223.

|         |   |              |      |              |     |      |          |
|---------|---|--------------|------|--------------|-----|------|----------|
| 004     | 36 A/F BRT. STL. HEX. BAR ALIGNMENT SCREW | BP1010172174 | 1.09 |              |     |      |          |
|         |   |              |      | BP10172      | 106 |      |          |
| 003     | 36 A/F BRT. STL. HEX. BAR ALIGNMENT SCREW | BP1010172174 | 1.09 |              |     |      |          |
|         |   |              |      | BP10172      | 106 |      |          |
| 002     | 36 A/F BRT. STL. HEX. BAR ALIGNMENT SCREW | AA1010172174 | 1.5  |              |     |      |          |
|         |   |              |      | BP10172      | 146 |      |          |
| 001     | 36 A/F BRT. STL. HEX. BAR ALIGNMENT SCREW | AA1010172174 | 1.5  |              |     |      |          |
|         |   |              |      | BP10172      | 146 |      |          |
| REMARKS | ITEM NO.                                  | DESCRIPTION  | STD  | MATL. CODE   | A/C | UNIT | UNIT WT. |
|         |   |              |      | MATL. SPECN. |     |      | QTY.     |

|                             |                            |  |                     |                                |   |                            |                             |
|-----------------------------|----------------------------|--|---------------------|--------------------------------|---|----------------------------|-----------------------------|
| INVENTORY NO.               | SIGN. & DATE               | बी.सच.ई.सल.<br>भारत हेवी इलेक्ट्रिकल्स लिमिटेड<br>भोपाल<br>BHARAT HEAVY ELECTRICALS LTD.<br>BHOPAL | वनाया DRN.          | नाम / NAME                     | हस्ता. /SIGN                                | दि./DATE                   | वे रि की संख्या NO.OF VAR.  |
|                             |                            |  | जांचा CKD.          | RKR                            | Rahul                                       | 07.02.15                   | -                           |
| ADDITIONAL INFO.<br>GES NO. | विभाग DEPT<br>कोड CODE 407 | अन.टल.नाप की त्रेणी UNTOL. DIMS. GR.<br>REF.CG.06503   | अनुपात SCALE<br>1:2 | भार (कि.ग्रा.) WEIGHT(KG)<br>- | असे.ड्राइंग का संदर्भ REF.TO ASSY.DRG.<br>- | मद क्र. ITEM NO.<br>-      | मद संख्या NO.OF ITEM<br>004 |
|                             |                            |  |                     |                                |   |                            |                             |
|                             |                            |  |                     |                                | शीट क्र /SHT.NO 01                          | शीटों की सं./NO.OF.SHT. 01 |                             |

THE INFORMATION ON THIS DOCUMENT IS THE PROPERTY OF BHARAT HEAVY ELECTRICALS LIMITED. IT MUST NOT BE USED DIRECTLY OR INDIRECTLY IN ANY WAY DETRIMENTAL TO THE INTEREST OF THE COMPANY.