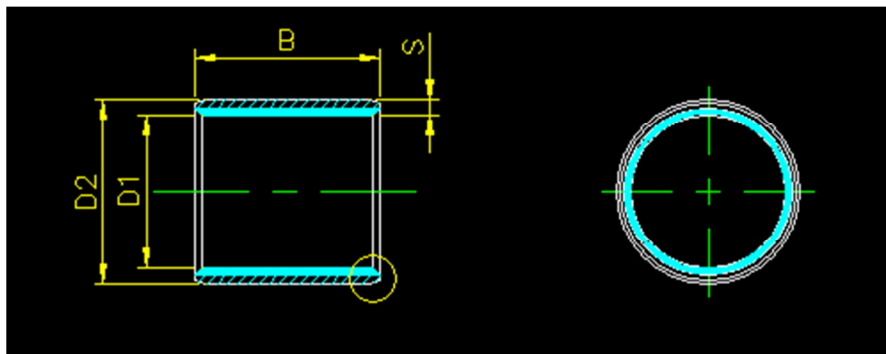


1. Name of component – **DU BUSH**
2. Part number with size:

PART NO.	GLACIERS CODE	D1	D2	S	B (± 0.25)
5550586	MB 1015	9.987 9.972	12.000 12.018	1.005 0.980	15
5550588	MB 1215	11.984 11.966	14.000 14.018	1.005 0.980	15
5550592	MB 1012	9.987 9.972	12.000 12.018	1.005 0.980	12
5550599	MB 2230	21.980 21.959	25.000 25.018	1.505 1.475	30
5550600	MB 2015	19.980 19.959	23.000 23.018	1.505 1.475	15
5550601	MB 1525	14.984 14.966	17.000 17.018	1.005 0.980	25
5550602	MB 1415	13.984 13.966	16.000 16.018	1.005 0.980	15

3. Drg.



4. Material properties

refer Du Bush 2.