



**PRODUCT STANDARD**  
**OIL RIG ENGINEERING DIVISION**

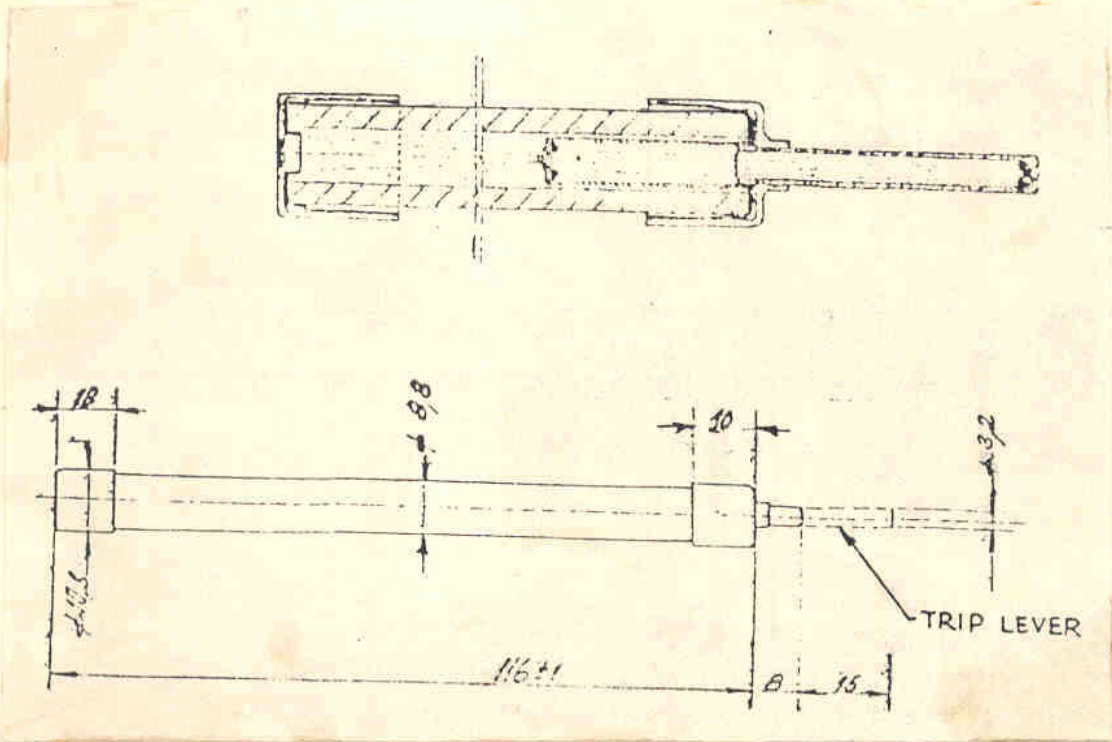
SPECIFICATIONS FOR 8A, 750V DC HIGH RUPTURING CAPACITY FUSE LINK

Fuse suitable for 8 Amp. 750V DC complete with trip trigger, style No. ST 809831 for operating microswitch. Suitable microswitch & mounting clamps for fuse shall also be supplied with the fuse.

Size/Weight : 10 mm dia x 116±1mm long, weight 250 gms. appx.

Conformance to Standards : IEC 269 - 1 & 4  
BS 88 - 1 & 4  
DIN 57636

FILE: OR 12132



CONFIDENTIAL  
document is the property of Bharat  
Electricity Board and should not be  
circulated or indirectly in any way detrime

The information on this document  
is not to be used for any other purpose  
without the prior approval of the  
concerned authority.

Revision: 00

Date: 10.12.93

PRINTS TO:-

SWM | 1

Approved: *[Signature]*

Prepared

*[Signature]*

Issued

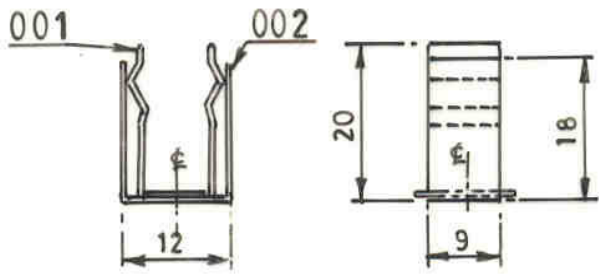
*[Signature]*

Date

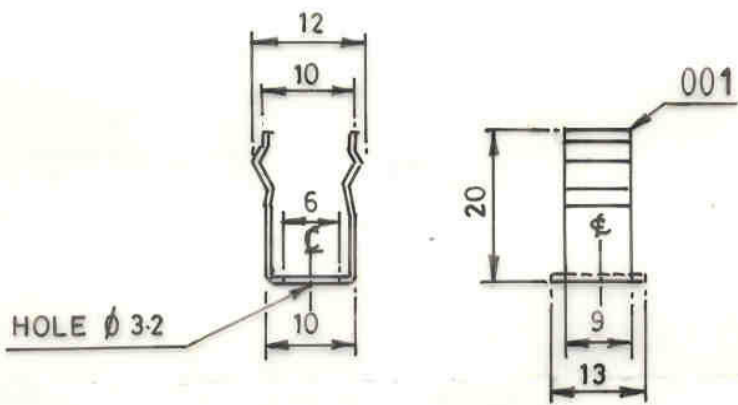
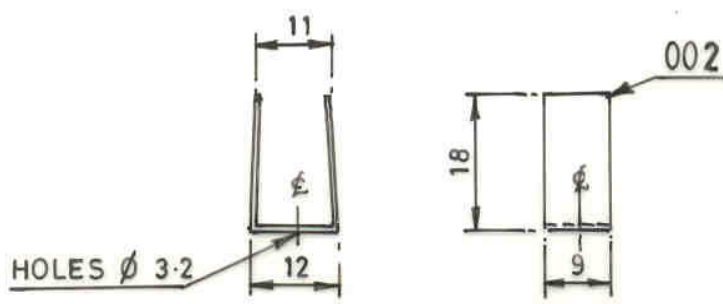
10.12.93

THE INFORMATION ON THIS DOCUMENT IS THE PROPERTY OF BHARAT HEAVY ELECTRICALS LIMITED. IT MUST NOT BE USED DIRECTLY OR INDIRECTLY IN ANY WAY DETRIMENTAL TO THE INTEREST OF THE COMPANY.

REV.	DATE	ALTERED	REV.	DATE	ALTERED	ADDITIONAL SPEC. NO.
		CHECKED	02	27/5	CHECKED <i>Rajput</i>	OR 12132
		APPROVED		9/5	APPROVED <i>Rajput</i>	STATUS OF DRAWING
DRG. RETRACED.						-
						DISTRIBUTION OF PRINTS
						o/c - 1



CLIP ASSY



- 001 - 0.5 MM TK BERELIUM CPR. SILVER PLATED 20. MICRONS.
- 002 - 0.5 MM TK SPRING STEEL COATED TO PREVENT CORROSION.

REF. DRG. NO. SIGN. & DATE INVENTORY NO.

	भारत हेवी इलेक्ट्रिकल्स लिमिटेड भोपाल BHARAT HEAVY ELECTRICALS LTD. BHOPAL		बनाया DRN.	नाम / NAME R.S.Rajput	हस्ता./SIGN sd-	दि./DATE 8.7.89	वेरि की संख्या NO. OF VAR.
			जांचा. CKD.	SKS	sd/-	8.7.89	-
		स्वीकृत APPD.	SKS	sd/-	8.7.89	-	-
विभाग DEPT. ORE	अन. टोल. नाप की श्रेणी UNTOL. DIMS. GR.		अनुपात SCALE	भार (कि.ग्रा.) WEIGHT (K.G.)	असे. ड्राईंग का संदर्भ REF. TO ASSY. DRG.	मद क्र. ITEM NO.	मद संख्या NO. OF ITEM
कोड 425 CODE	-	1:1	-	-	-	-	-
शीर्षक / TITLE FUSE CLIP ASSEMBLY FOR 8 A 750 V DC FUSE				ड्राईंग क्र. / DRAWING NO. SKETCH NO. ORE/4/4172		पृष्ठ क्र. / REV. 02	
				पृष्ठ क्र. / SHT. No. 01	पृष्ठों की सं. / NO. OF SHT. 01		