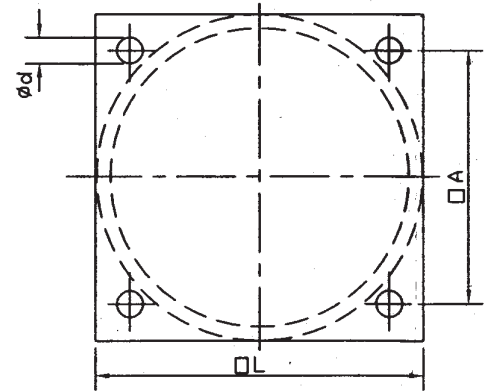
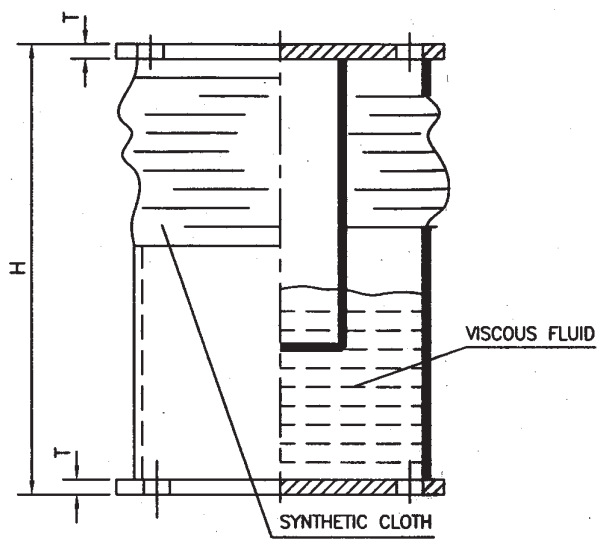


FIRST ANGLE PROJECTION

( ALL DIMENSIONS ARE IN mm )

FORM DG 38(B)

STE-TL-115  
DRAWING No.



| DU NO. | LOAD        | MOVEMENT IN mm |            | H   | T  | DA  | DL  | phi d | APPROX. WT. IN Kg. |
|--------|-------------|----------------|------------|-----|----|-----|-----|-------|--------------------|
|        | RANGE IN KN | VERTICAL       | HORIZONTAL |     |    |     |     |       |                    |
| 9311   | 0.2-0.8     | ±40            | ±40        | 240 | 8  | 135 | 175 | 15    | 09.00              |
| 9312   | 0.8-2.8     | ±40            | ±40        | 240 | 10 | 180 | 235 | 19    | 15.80              |
| 9313   | 0.2-0.8     | ±40            | ±60        | 240 | 10 | 180 | 235 | 19    | 18.20              |
| 9314   | 0.8-2.8     | ±40            | ±60        | 240 | 10 | 180 | 235 | 19    | 18.50              |
| 9315   | 2.8-4.2     | ±40            | ±40        | 240 | 10 | 180 | 235 | 19    | 18.70              |
| 9316   | 0.2-0.8     | ±40            | ±70        | 240 | 10 | 230 | 300 | 24    | 27.00              |
| 9317   | 0.0-0.2     | ±40            | ±60        | 240 | 8  | 135 | 175 | 15    | 15.40              |
| 9318   | 0.0-0.2     | ±40            | ±75        | 240 | 10 | 180 | 235 | 19    | 18.00              |
| 9319   | 0.0-0.2     | ±40            | ±40        | 240 | 8  | 135 | 175 | 15    | 08.00              |

NOTES:-

1. SURROUNDING TEMPERATURE 45°C.
2. THESE DAMPERS SHOULD BE SUITABLE TO TAKE SUDDEN DYNAMIC LOAD AS MENTIONED IN THE TABLE.
3. THE SKETCH INDICATES ONLY GENERAL VIEW AND OUT LINE DIMENSIONS FOR GENERAL INFORMATION.
4. DAMPER SHOULD BE PROVIDED WITH RATING NAME PLATE ALONGWITH DU NO.
5. MATERIAL FOR THE COMPONENTS SHOULD BE ASTM A106 Gr.B OR BS EN 10216 OR DIN 2391 PART-1 ST-35 OR EQUIVALENT FOR PIPES AND IS:2062 Gr.C OR DIN17100 ST-52.3 OR SAIL GRADE MA350 HISK OR EQUIVALENT FOR PLATES.
6. PAINTING SCHEME

| PAINT (COAT)           | PAINT TYPE   | NO. OF COAT   | DFT* |
|------------------------|--|---------------|------|
| PRIMER PAINT :         | EPOXY BASE ZINC RICH PRIMER PAINT                      | 2 COATS       | 70   |
| INTERMEDIATE PAINT :   | EPOXY TiO <sub>2</sub> PIGMENTED POLYAMIDE CURED PAINT | 1 COAT        | 70   |
| FINISH (FINAL) PAINT : | ALIPHATIC ACRYLIC 2 PACK POLYURETHENE FINISH PAINT     | 2 COATS       | 60   |
|                        |  | TOTAL DFT 200 |      |

\* DFT - DRY FILM THICKNESS (FINAL) IN MICRONS  
SHADE : DARK GREY RAL 7000 AS PER IS-5 OR EQUIVALENT

COPYRIGHT AND CONFIDENTIAL  
THE INFORMATION ON THIS DOCUMENT IS THE PROPERTY OF BHARAT HEAVY ELECTRICALS LIMITED. IT MUST NOT BE USED DIRECTLY OR INDIRECTLY IN ANY WAY DETERIMENTAL TO THE INTEREST OF THE COMPANY.

Ref. Drawing No.  
Sign & Date  
Inventory No.

|                    |           |
|--------------------|-----------|
| GRADE OF UNTOL.DIM |           |
| M/CG.-φ/M/φ        | AA0230208 |
| WELDING-φ/B/φ/φ    | AA0621104 |
| GAS CUTTING-T3     | AA0621101 |

|             |      |         |      |               |
|-------------|------|---------|------|---------------|
| -GMS No./   |      | C B O M |      | STATUS OF DRG |
| AGREED DEPT | NAME | SIGN    | DATE |               |
|             |      |         |      |               |
|             |      |         |      |               |

|                          |  |           |  |      |  |          |  |            |
|--------------------------|--|-----------|--|------|--|----------|--|------------|
| TYPE OF PRODUCT          |  | NAME      |  | SIGN |  | DATE     |  | NO. OF VAR |
| OR                       |  | R.K.SAINI |  | -Sd- |  | 19.09.83 |  |            |
| NAME OF CUSTOMER/PROJECT |  | V.K.G.    |  | -Sd- |  | 11.10.83 |  |            |
|                          |  | K.C.S.    |  | -Sd- |  | 20.10.83 |  | 73 74      |

|           |        |             |                    |                 |              |
|-----------|--------|-------------|--------------------|-----------------|--------------|
| DEPT STE  | SCALE  | WEIGHT (KG) | REF. TO ASSY. DRG. | ITEM No.        | NO. OF ITEMS |
| CODE 4011 | N.T.S. | -           | -                  | -               | 75 77        |
| TITLE :   |        | CARD CODE   | DRAWING NO.        | REV.            |              |
| DAMPER    |        | 7           | STE-TL-115         | 10              |              |
|           |        |             |                    | 22 23 24        |              |
|           |        |             | SHEET No. 1        | No. OF SHEETS 1 |              |

SIZE A3